

DCS Plugin Installation Guide

This DCS plugin will allow us to view remotely VPON21 DVR's using IE. Uninstall your current DCS, apply the patch to the DVR and after that connect to the DVR using IE. It will download and install the DCS.

Requirements:

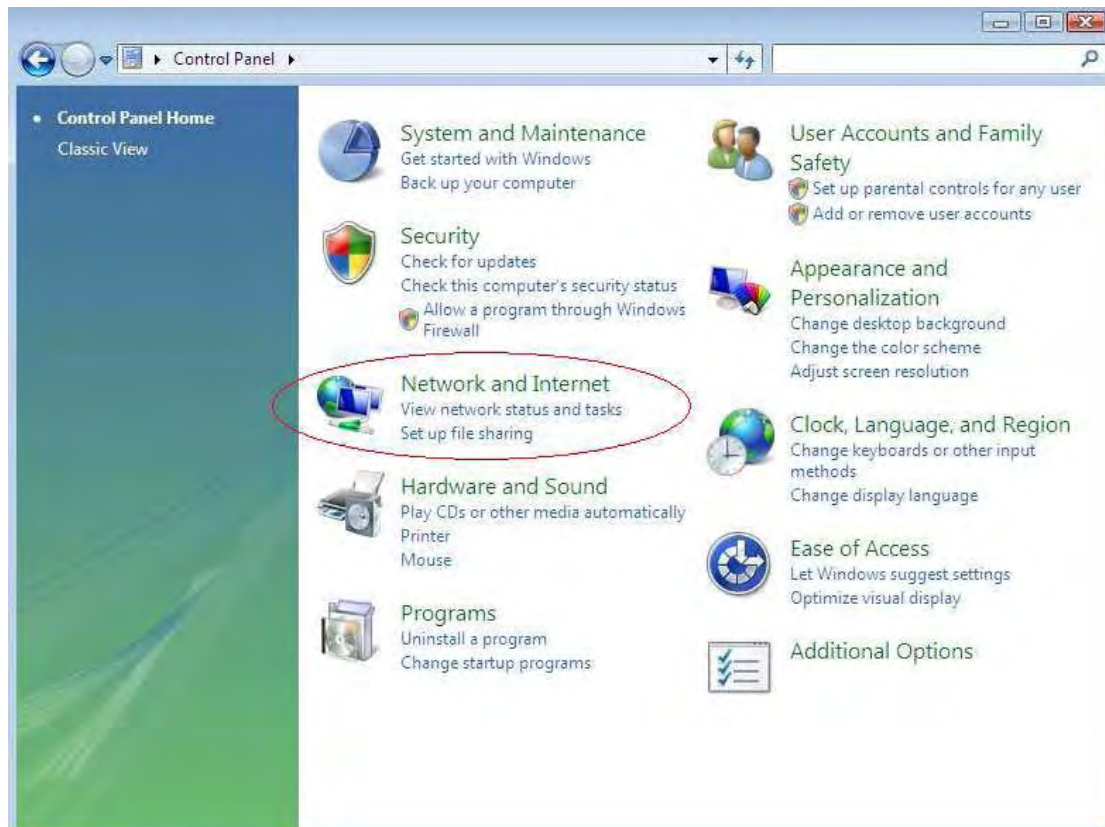
- ✧ PC OS: Windows Xp/Vista

Guides:

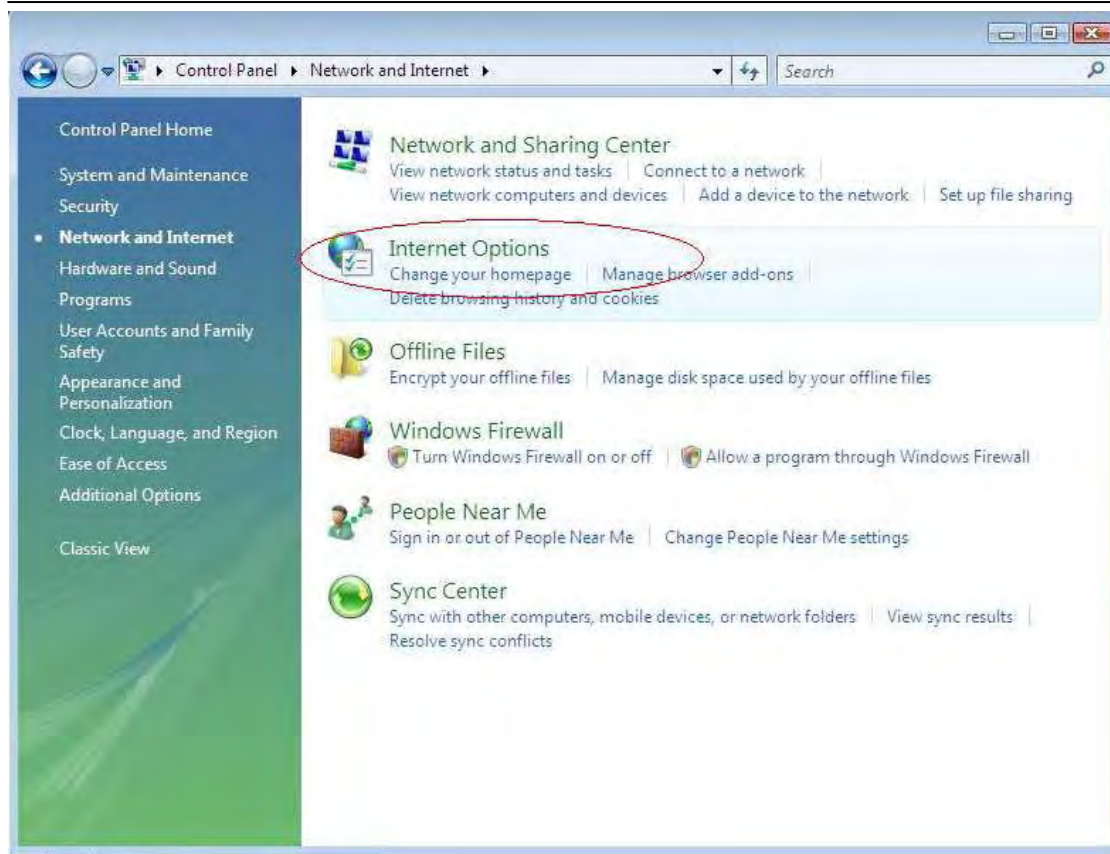
- ✧ Installation in Windows Vista
- ✧ Installation in Windows XP + IE7

Windows Vista

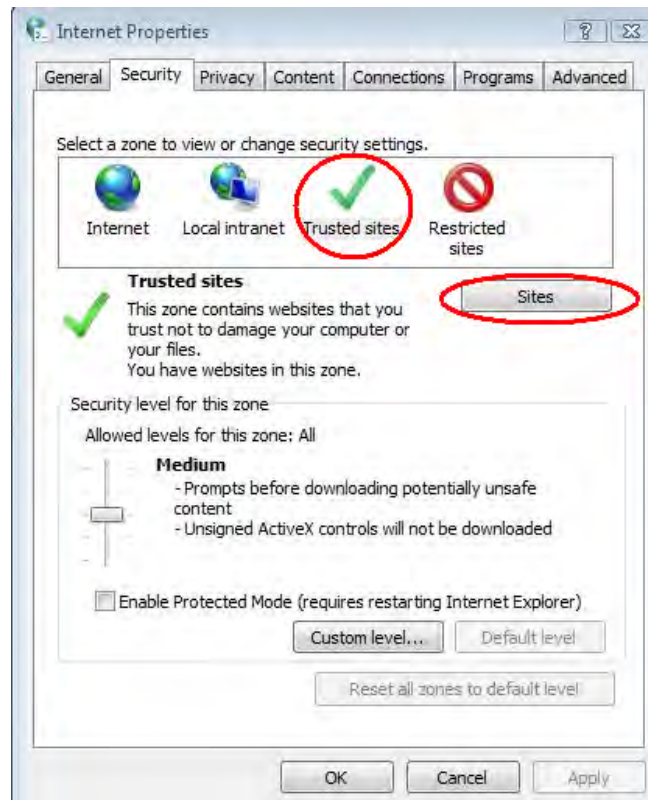
1. Login to Windows Vista using an **Administrator level** account.
2. **If you have DCS / Secuwatch / Secuwatch Client installed in the PC, please uninstall it first.**
3. Now we have to setup Internet Explorer options to be able to install the DCS Plugin.
4. Go to “**Control Panel**” and click on “**Network and Internet**”.



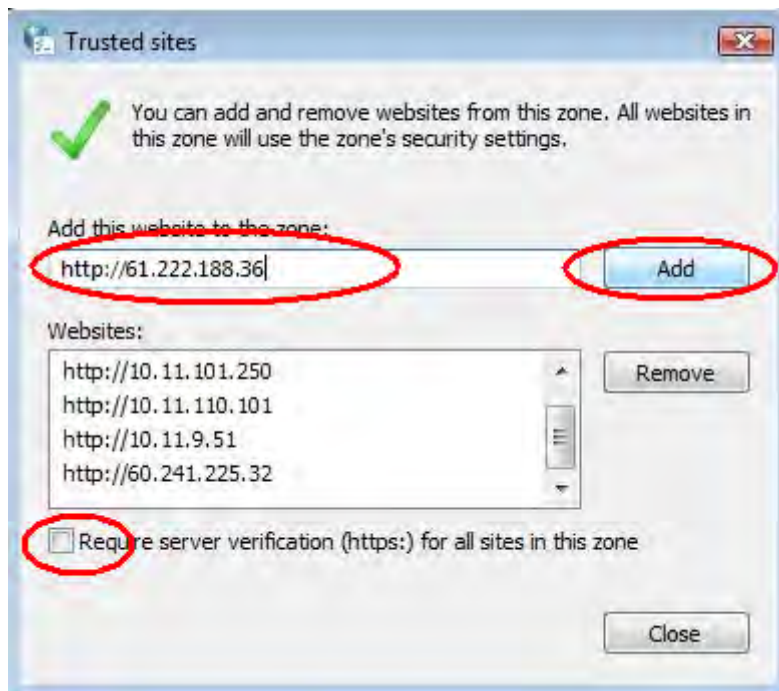
5. Now click on “**Internet Explorer Options**”.



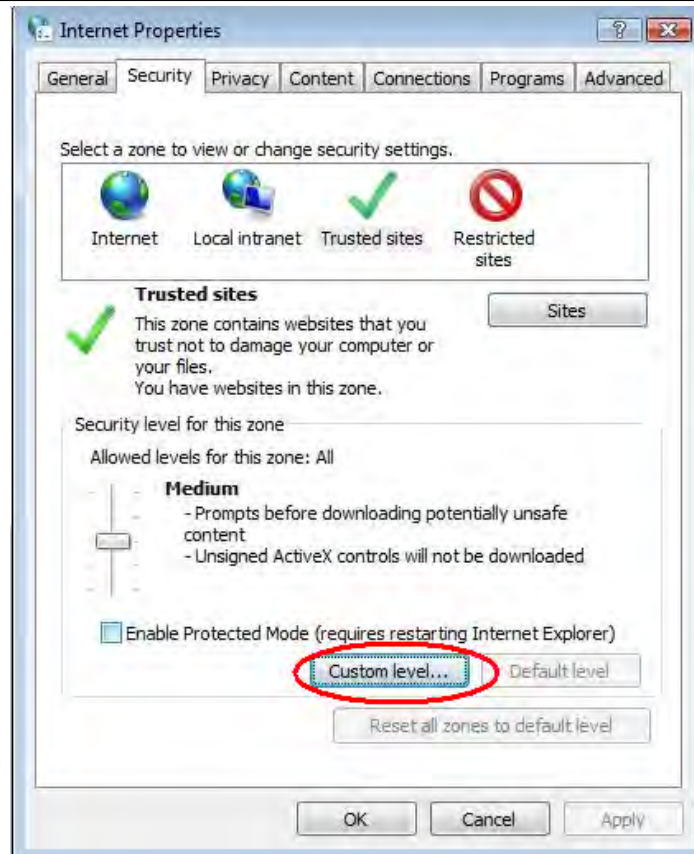
6. Add the IP of the DVR into the trusted sites by going to the **"Security"** Tab, select **"Trusted Sites"** and click on **"Sites"**.



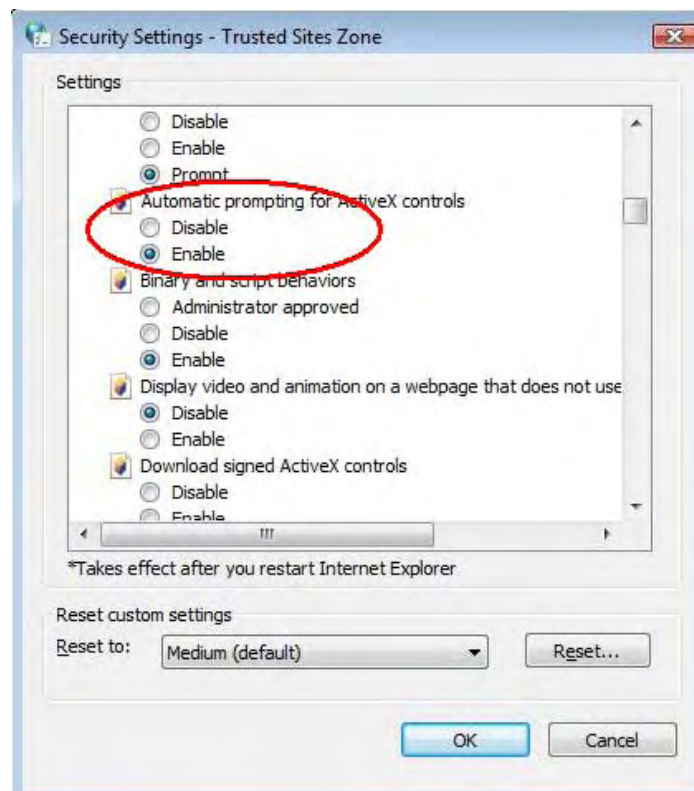
7. Enter the IP of the DVR, **unselect** the https verification and click on Add.

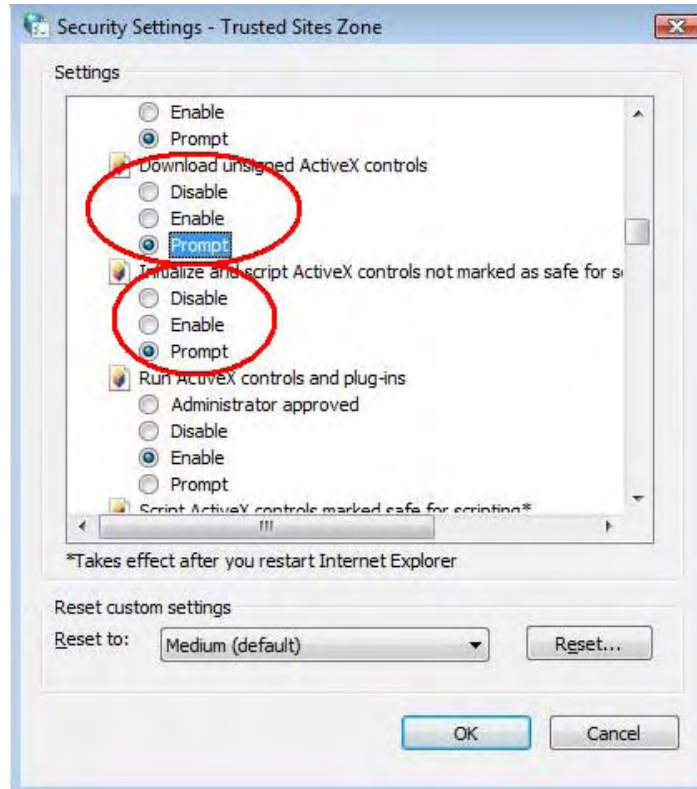


8. Configure the options for ActiveX Controls by clicking on “**Custom level**” (of the Trusted Sites)

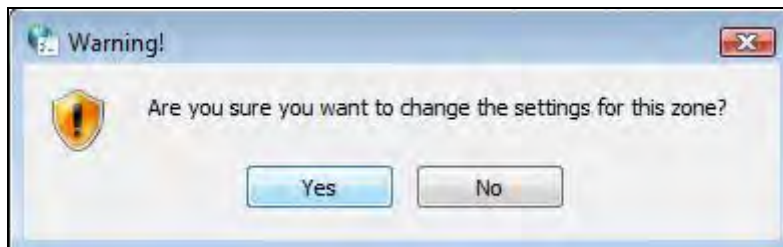


9. Enable the following settings of the ActiveX:

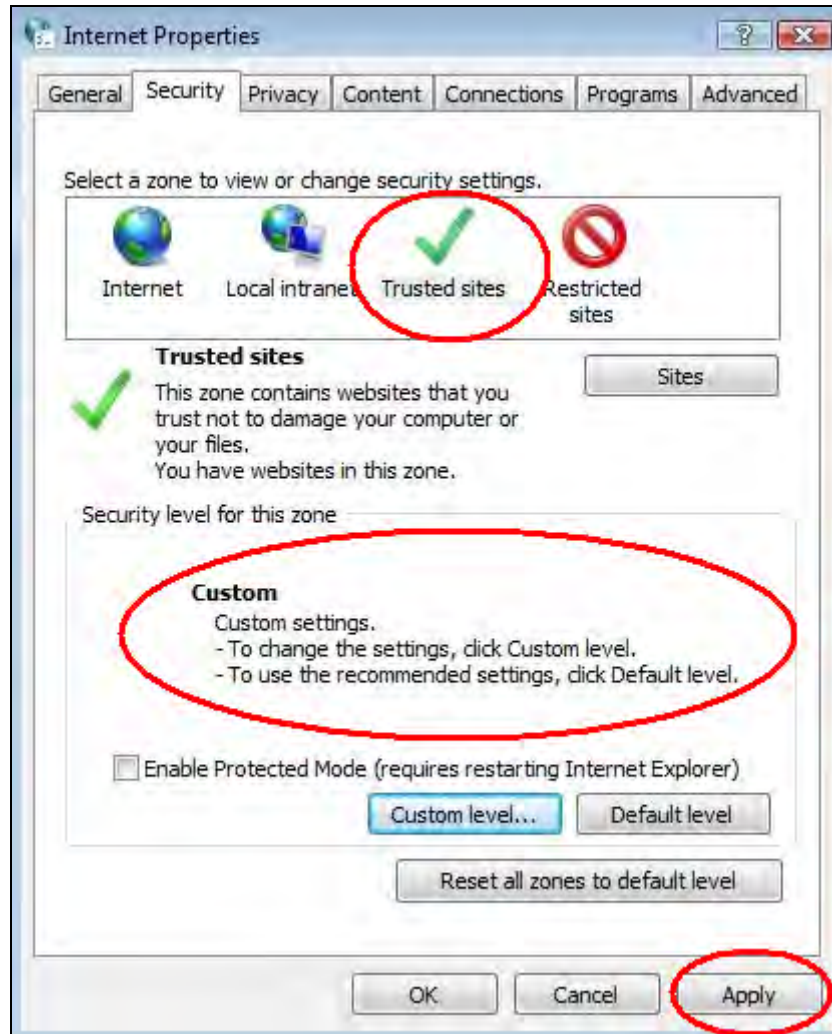




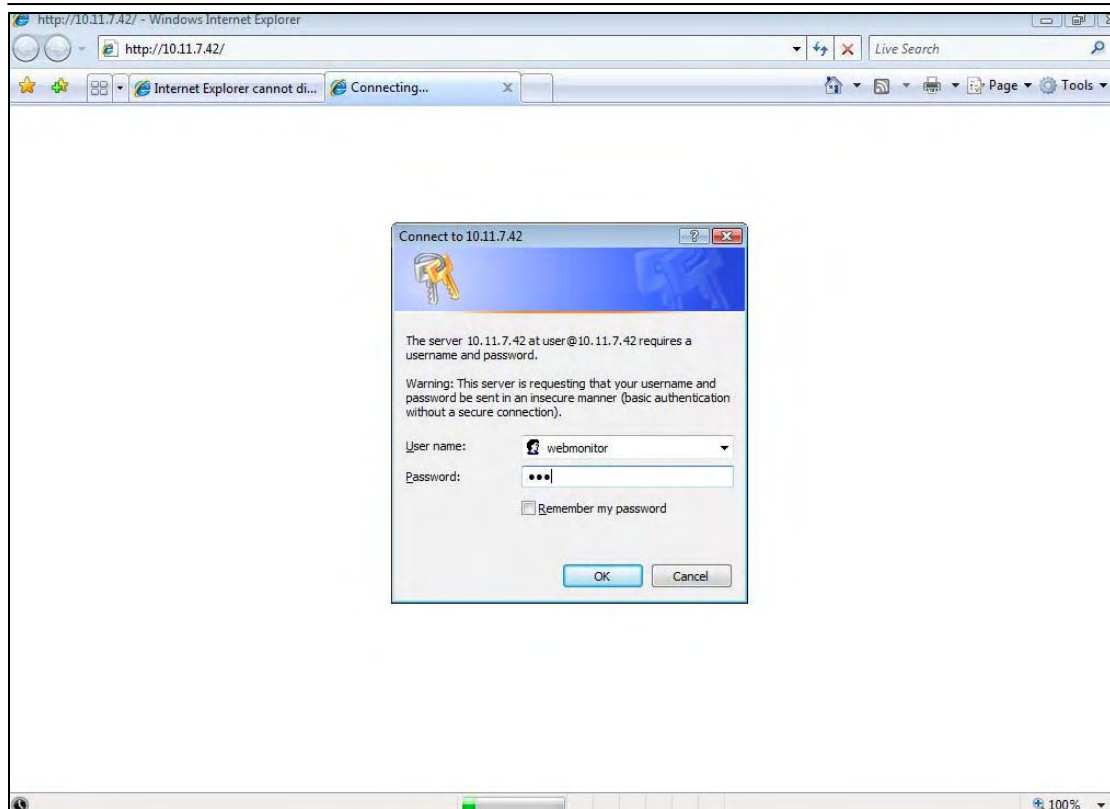
1. Click on "Yes" if the following figure shows up.



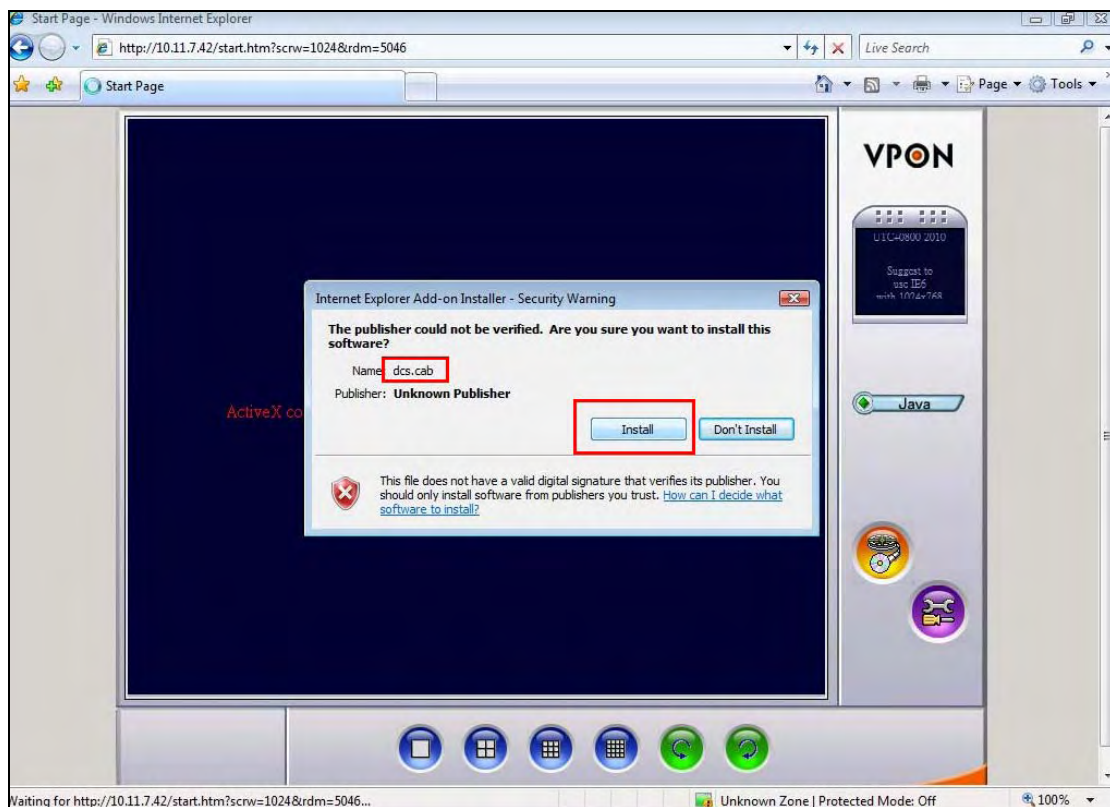
2. Make sure that the Security Level for the "Trusted sites" zone is in "Custom" and then click on "Apply".



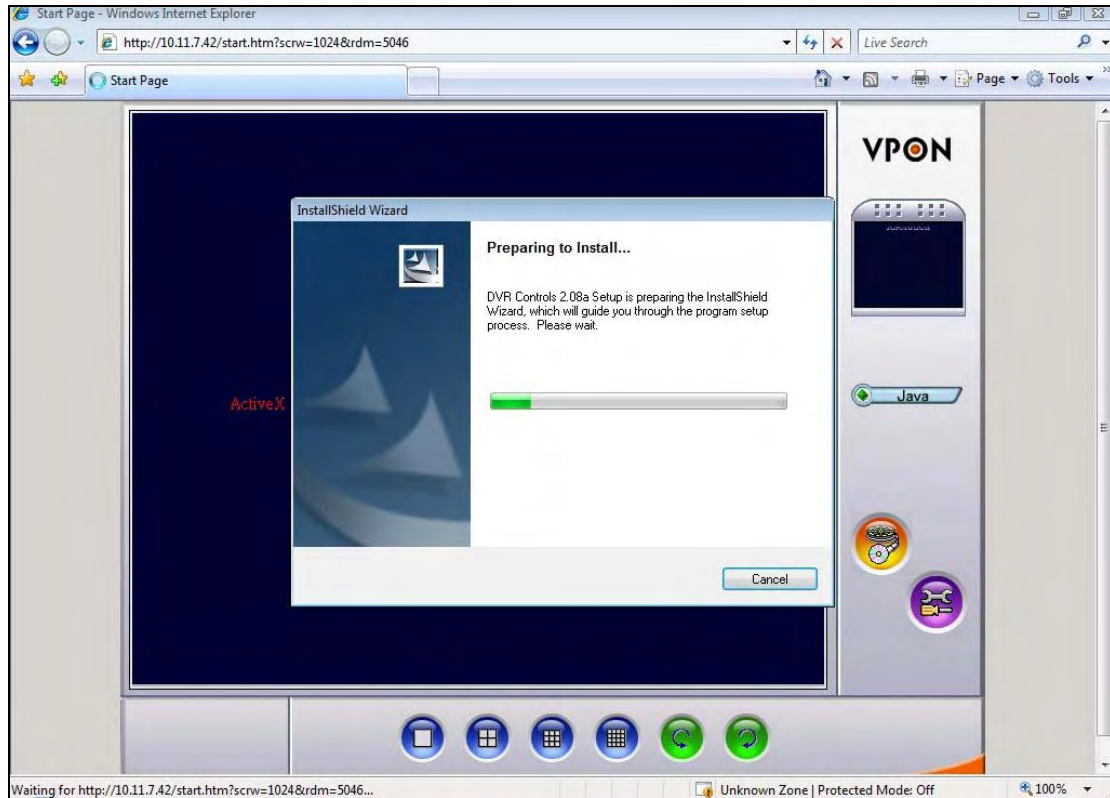
3. Open Internet Explorer and key in the IP of the DVR.
4. It will ask you for the username and password:



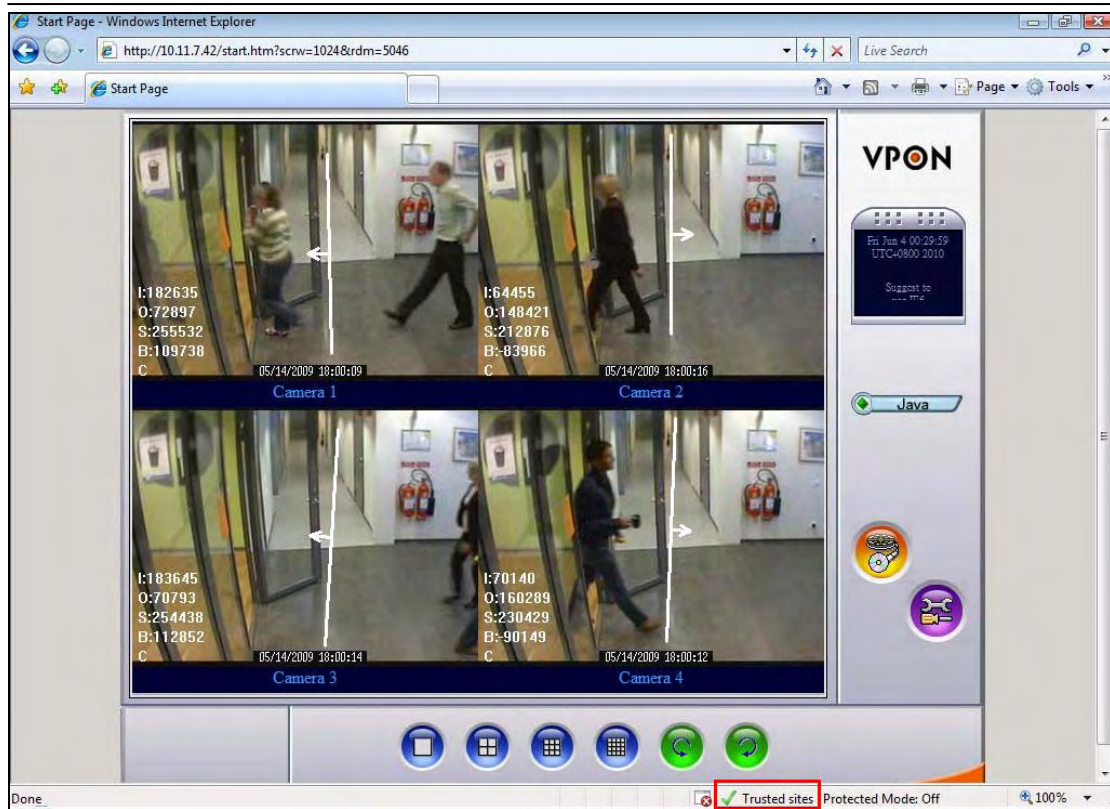
5. It will ask you to install the "**dcx.cab**" and click on "Install".



- The DCS will start to install after downloading the dcs.cab. Please be aware that the download can take various minutes depending on the bandwidth of your and the DVR's connection.



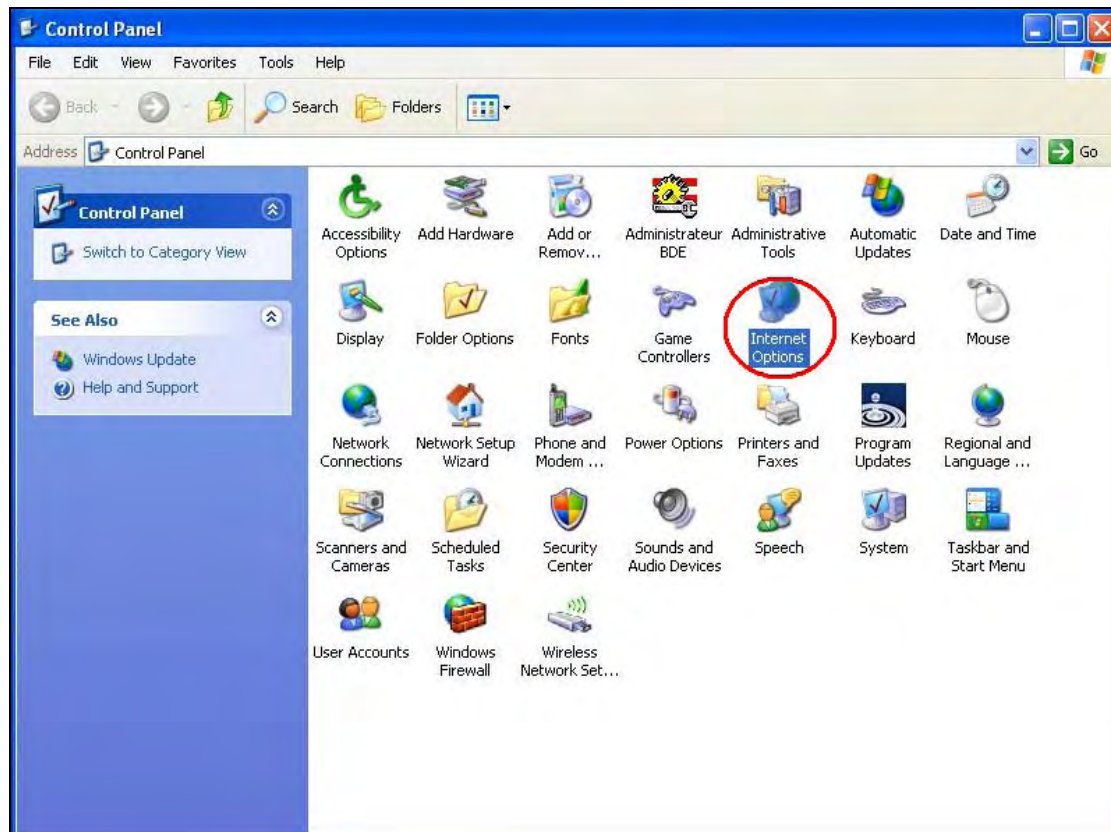
- After the installation, you will be able to access remotely the DVR



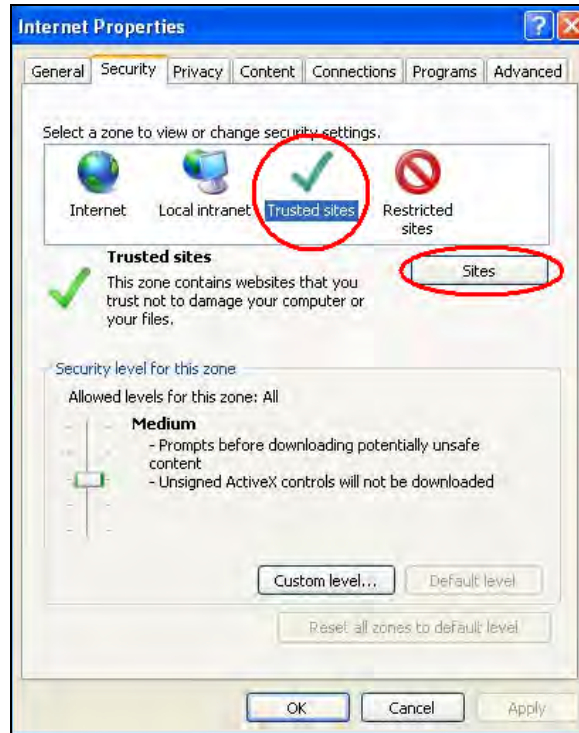
Note: In the right-down corner it must say **"Trusted Sites"**, this means that this webpage is in the **"Trusted Sites"** zone. If it shows **"Internet"**, then you did not add successfully the IP of the DVR to the trusted site list. Please follow all the steps from the beginning again.

Windows XP + IE7

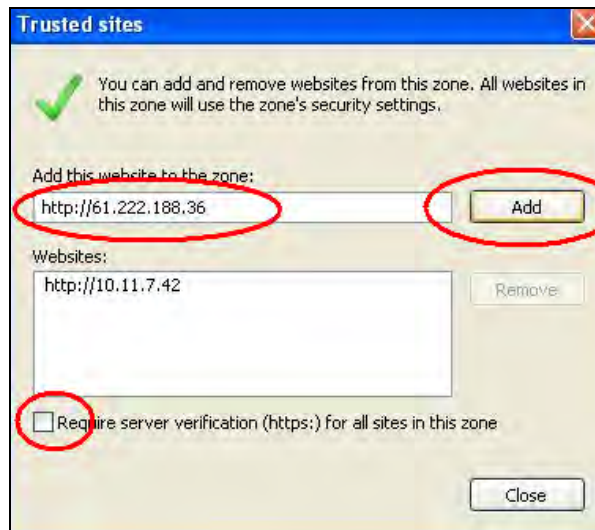
1. Login to Windows XP using a **Administrator level** account.
2. **If you have DCS / Secuwatch / Secuwatch Client installed in the PC, please uninstall it first.**
3. Now we have to setup Internet Explorer options to be able to install the DCS Plugin.
4. Go to **“Control Panel”** and click on **“Internet Options”**.



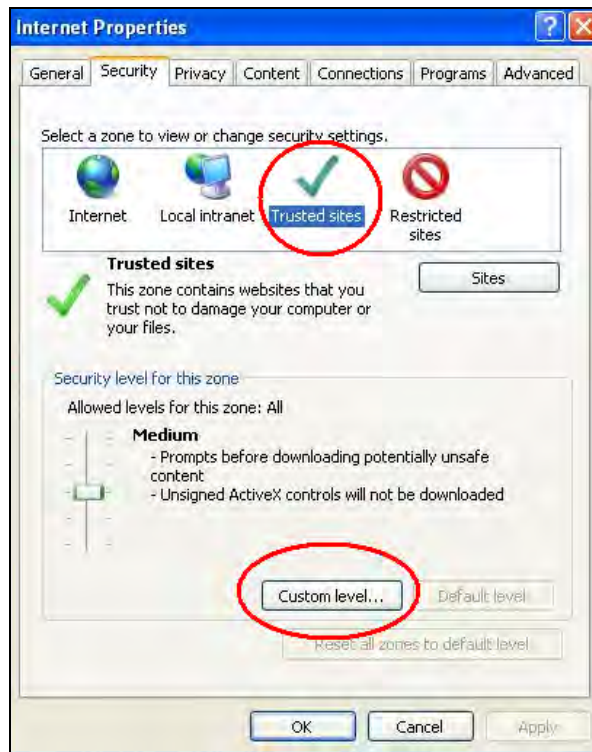
5. Add the IP of the DVR into the trusted sites by selecting the **“Security”** Tab, select **“Trusted Sites”** and click on **“Sites”**.



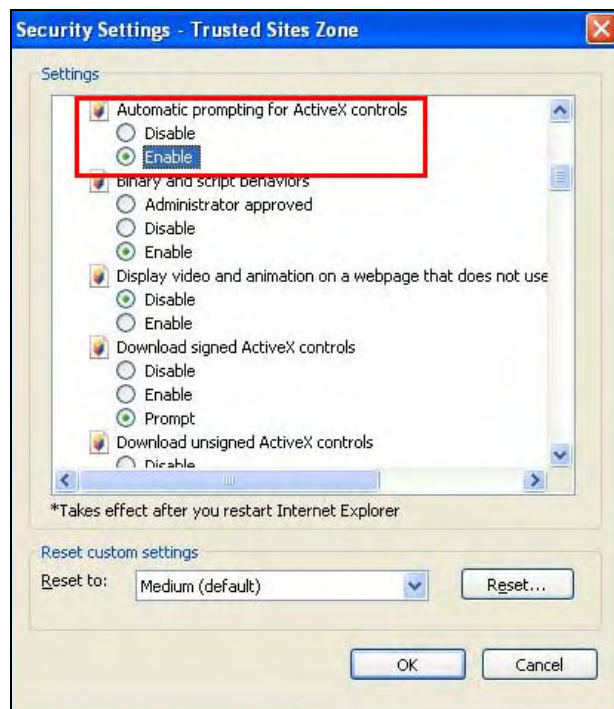
6. Enter the IP of the DVR, **unselect** the https verification and click on Add.

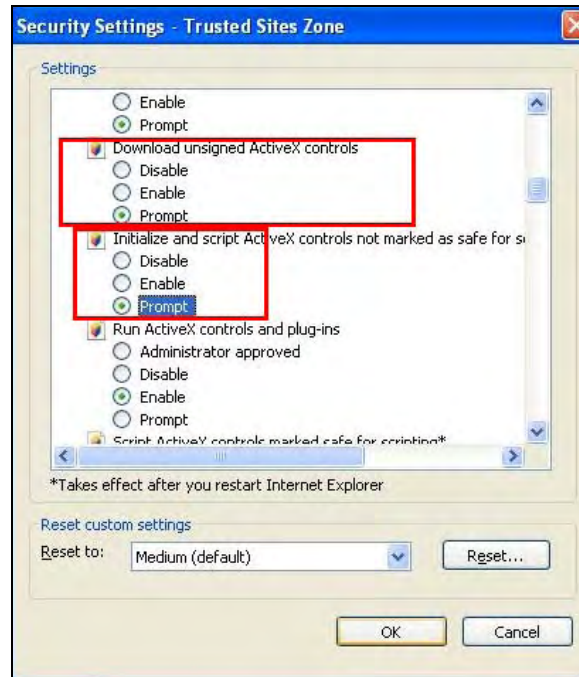


7. Configure the options for ActiveX Controls by clicking on “**Custom level**” (of the Trusted Sites)

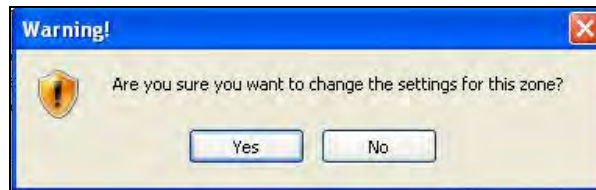


8. Enable the following settings of the ActiveX:

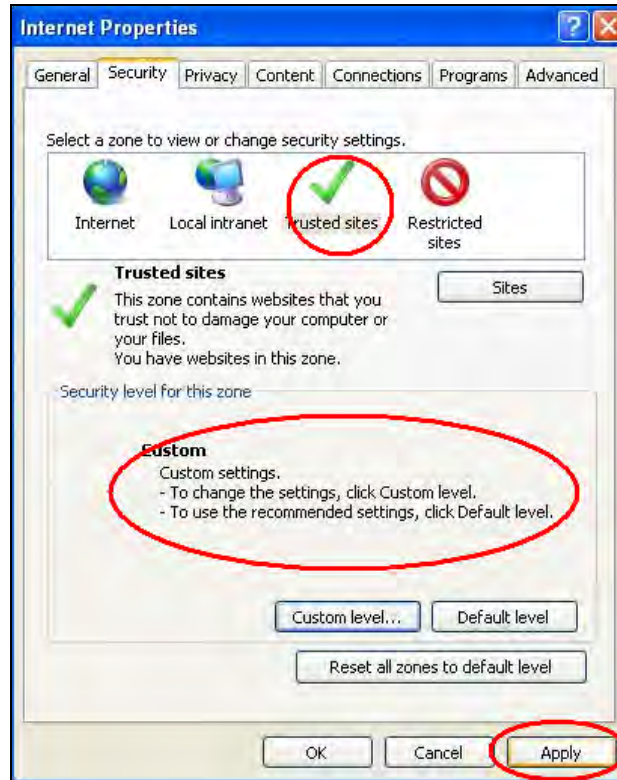




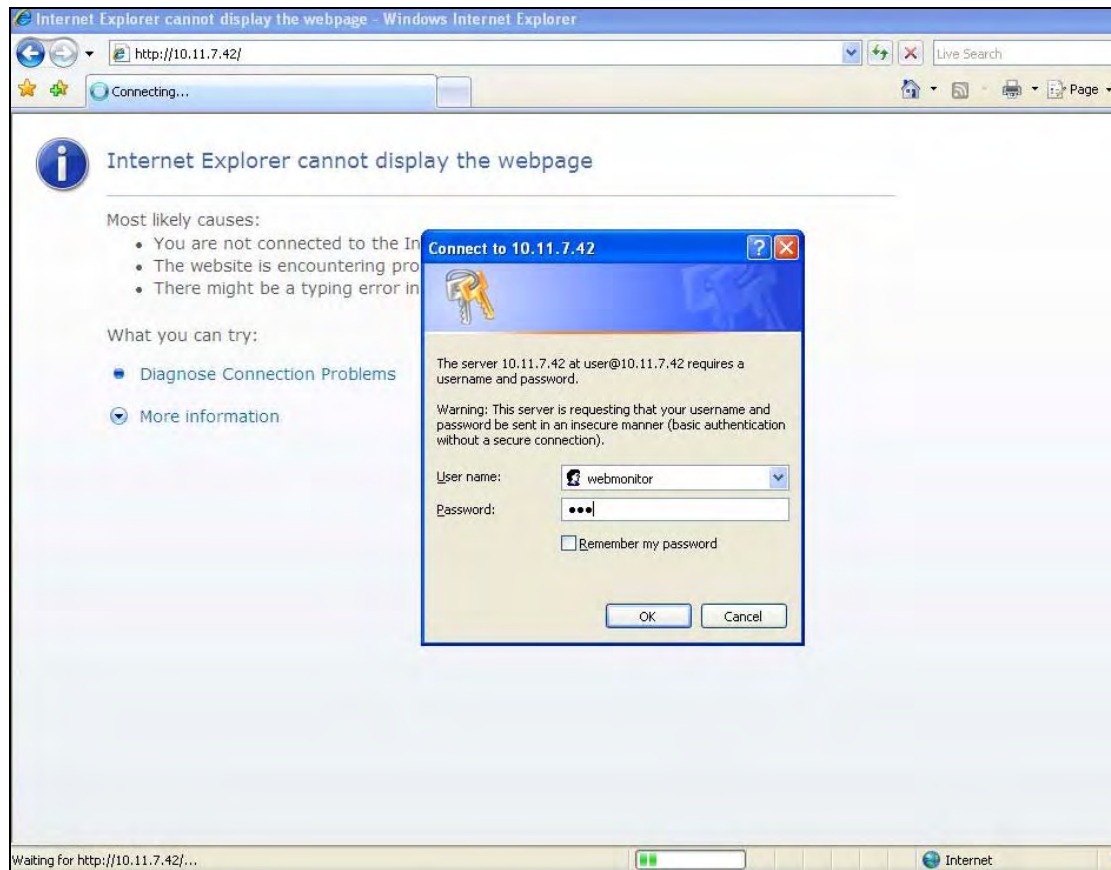
9. Click on "Yes" if the following figure shows up.



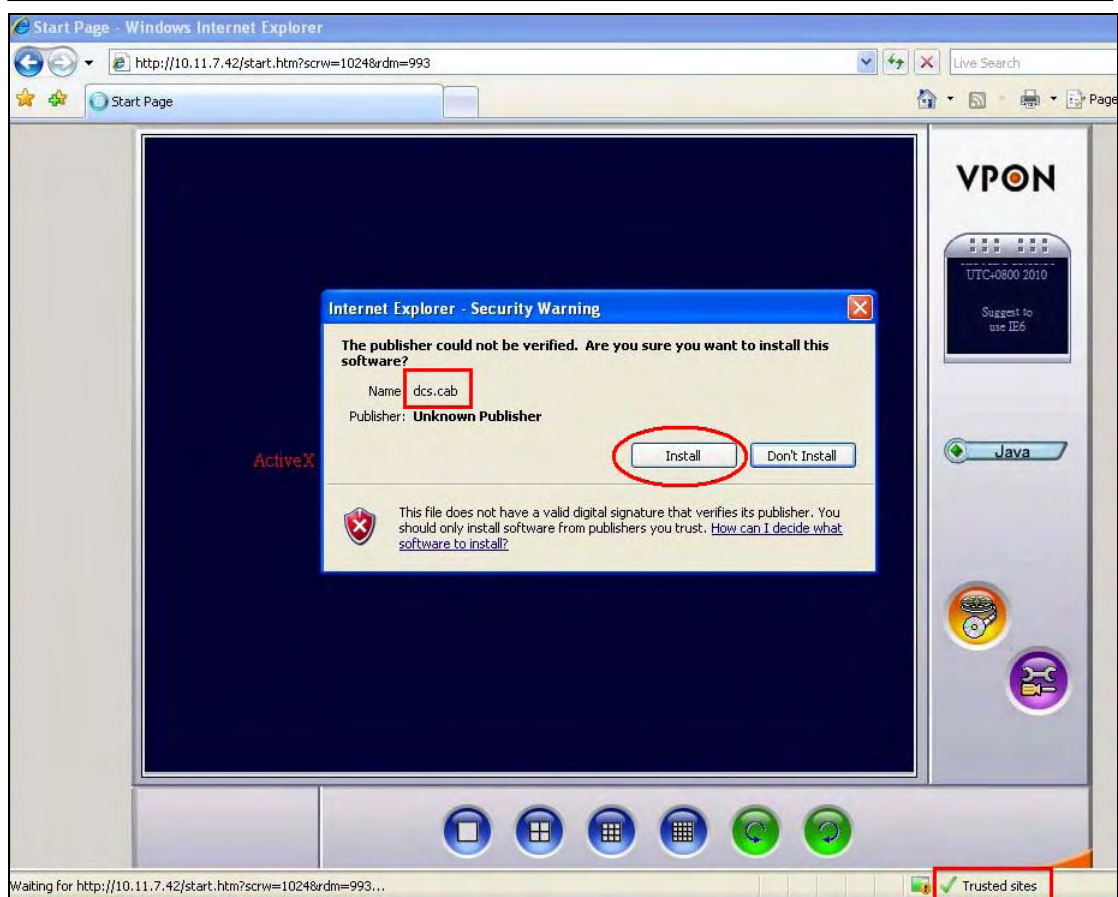
10. Make sure that the Security Level for the "Trusted sites" zone is in "Custom" and then click on "Apply".



11. Open Internet Explorer and key in the IP of the DVR.
12. It will ask you for the username and password:

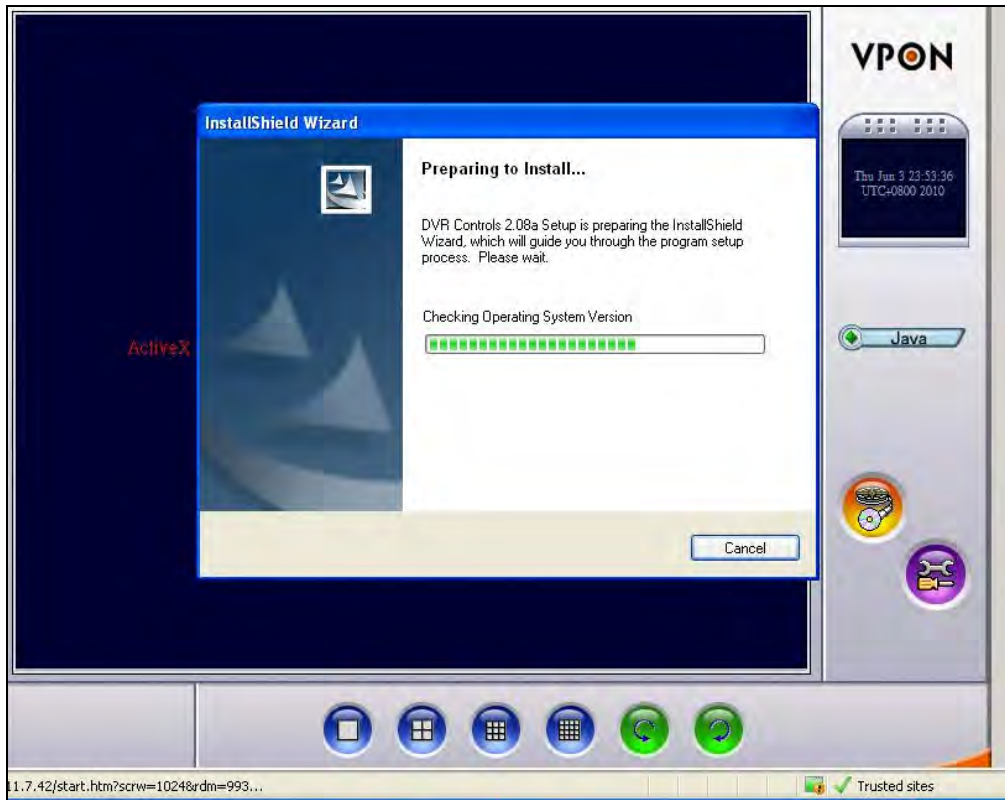


13. It will ask you to install the "**dcs.cab**" and click on "Install".



Note: In the right-down corner it must say "**Trusted Sites**", this means that this webpage is in the "**Trusted Sites**" zone. If it shows "**Internet**", then you did not add successfully the IP of the DVR to the trusted site list. Please follow all the steps from the beginning again.

14. The DCS will start to install after downloading the dcs.cab. Please be aware that the download can take various minutes depending on the bandwidth of your and the DVR's connection.



15. After the installation, you will be able to access remotely the DVR

