



Receiver software with network support

© Copyright VisionSoft Inc., 1992-2008

© Telexper International Inc. 1992-2008

Copyright Notice

Information in this document is subject to change without notice. Telexper international Inc. may make improvements or changes in this manual and in VS-168 at any time. The software, which includes the information contained described in this document is furnished under a license agreement and may be used or copied only in accordance with the terms of the agreement. It is against the law to copy the software except as specifically allowed in the license agreement. No part of this manual may be reproduced or transmitted in any form or by any means, including photocopying and recording, for any purpose without prior written permission of VisionSoft Inc.

© Telexper International Inc. 1992-2008

All rights reserved Taiwan.

Version:1.0

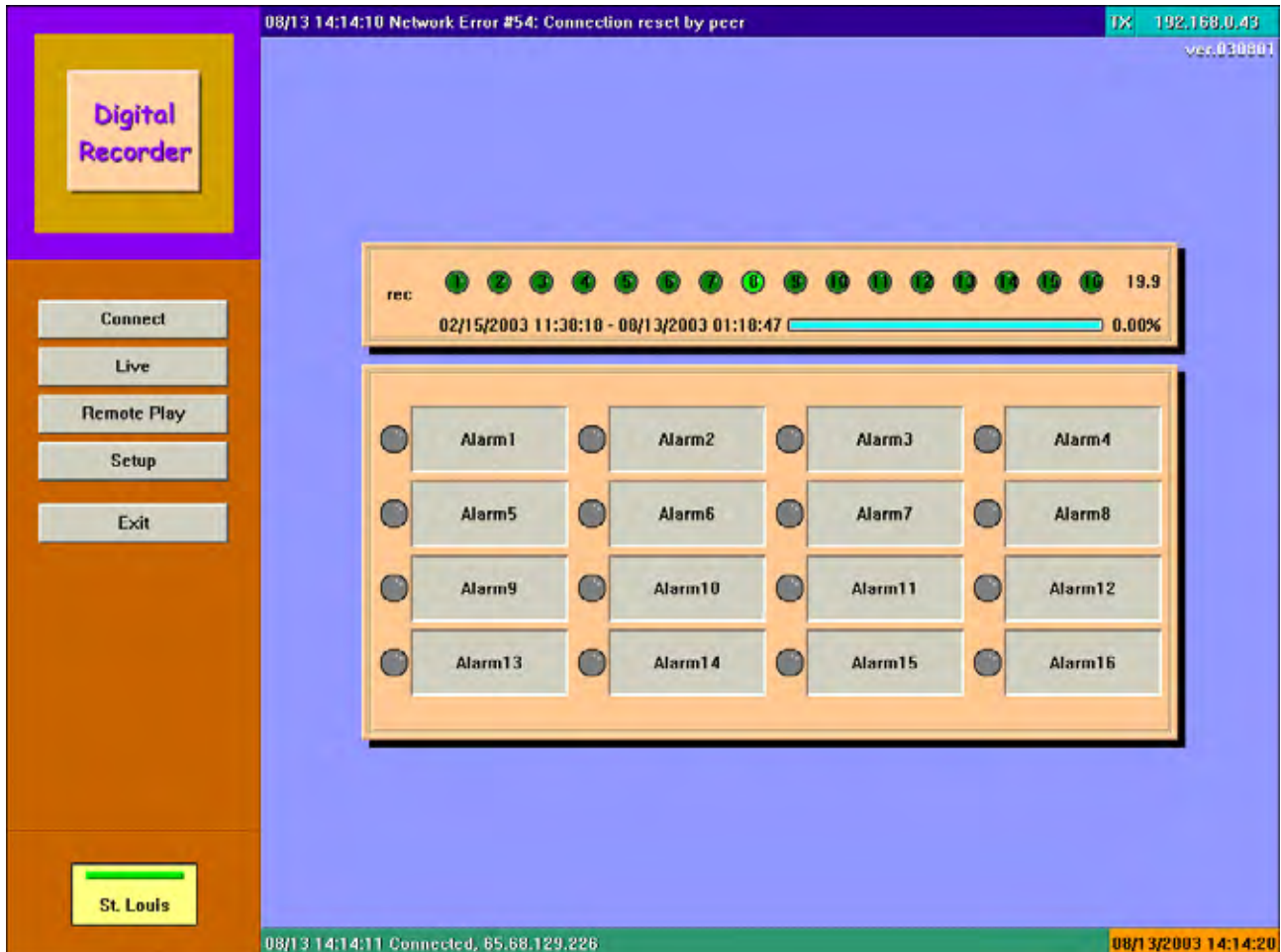
Contents

Chapter 1 The Receiver Software.....	1-1
Using the Digital Recorder Receiver System	1-1
System status display and Alarm control.....	1-2
Chapter 2 Dialing and Connecting.....	2-1
How to preset Network station's name and address	2-1
Chapter 3 System Setup	3-1
Setting camera properties.....	3-2
Setting Alarm properties	3-6
Recording mode setting	3-8
Motion detection function.....	3-9
4-zone motion detection setting	3-11
Setting relay output properties (Optional).....	3-12
Setting Backup properties (Available only on units with Hot Swap Drive).....	3-13
Sequencer function (Not available on slim size model).....	3-14
Administration setting (On line mode).....	3-15
Administration setting (Off line mode)	3-16
Camera Stable time	3-16
Change Password-Administrator	3-17
Change Password-System operator.....	3-17
Change Password-operator	3-18
Change Date/time.....	3-18
Windows Setting	3-18
Software Upgrade	3-19
Receiver Settings.....	3-20
Using the Setup function button	3-21
Using the keyboard on screen	3-21
Chapter 4 Monitor live images	4-1
How to monitor the live image	4-1
Spot window.....	4-2
Toolbar control.....	4-2
Full screen display of a camera.....	4-2
Color Control.....	4-2

Chapter 5 Play back the Recorded Images.....	5-1
Control Playback function	5-2
Export the image record as AVI file.....	5-3
Full screen playback a camera.....	5-6
Digital zoom	5-6
Printing Images	5-7
Using playback control box	5-9
Finding Image data	5-10
Chapter 6 How to Make Receiver work on Windows Vista 32 bits	6-1
Chapter 7 Q&A	7-1

Chapter 1 The Receiver Software

After you have successfully installed the Network Receiver software and run the program, the Receiver main screen will be displayed.



(The above illustration shows 16 channel model. For 4/8 channel models, there will be 4/8 lights flashing and 4/8 alarms displayed)

Using the Digital Recorder Receiver System

1. Press **Live** to enter the live menu and select the number of cameras you want to view (up to 16 cameras) on the screen and to select the image displaying size and type.
2. Press **Remote Play** to enter the DVR site playback menu to view the recorded images in the hard disk of the DVR. You can select the camera channels desired and video screen display type.
3. Press **Setup** to enter setup menu to select the properties for Camera, Alarm, and Backup function.
4. Press **Exit** to exit the Receiver system.

System status display and Alarm control



(The above illustration shows 16 channel model. For 4/8 channel models, there will be 4/8 lights flashing.)

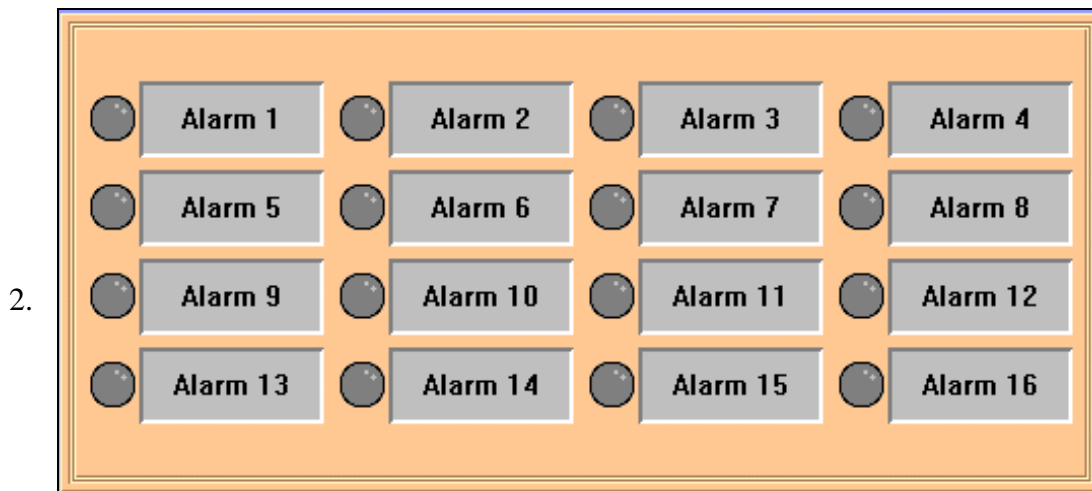
This box displays the active cameras, indicated by the flashing lights scanning across the camera lights.

The number to the right of the camera lights indicates the frames per second (fps) speed active on this unit. This number is divided among the number of active cameras on the unit.

The date and time on the left refers to the earliest date and time recorded in the unit.

The date and time on the right refers to the most recent date and time recording into the unit. The time changes constantly to indicate that the unit is actively recording information into the unit.

The bar and percentage indicate the amount of free space in the hard drives. When the percentage reaches 0.0%, the unit rewrites over the earliest information stored onto the unit.



(The above illustration shows 16 channel model. For 4/8 channel models, there will be 4/8 alarms displayed)

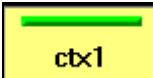
This box displays activated alarms that are triggered on the unit. When an alarm is triggered, the corresponding alarm light will turn red and the alarm message will flash. Move the cursor on top of the arm box and click the left mouse button to turn off the alarm. If a keyboard is plugged into the back of the unit, pressing the spacebar will also turn off the alarm.

3. 

The top bar displays the name of the unit, the IP address of the unit if the unit is network capable, the modem setting of the unit (Dialup-Line or Leased-Line), and the current status of a remote site connecting to the unit via modem transmission (on-line or off-line).

4. 

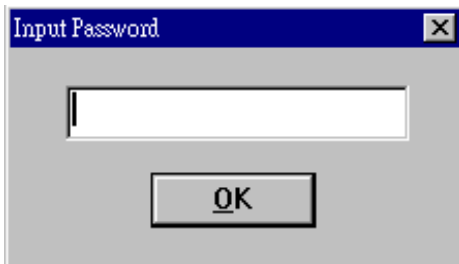
The left side of the bottom bar displays the most recent status of a remote site connecting to the unit via network. The right side of the bottom bar displays the current date and time of the Digital Recorder unit.

5. 

The presence of four silver boxes on the bottom left side of the screen indicates that the unit is network capable. When one of the boxes lights up, it means that a remote site is connected to the unit via network, featuring the name of the remote computer connected within the lit square.

Chapter 2 Dialing and Connecting

Press the **Connect** System will display a dialog box requiring the user to enter the password



; A digital keyboard is also shown on the screen to help user enter

the password

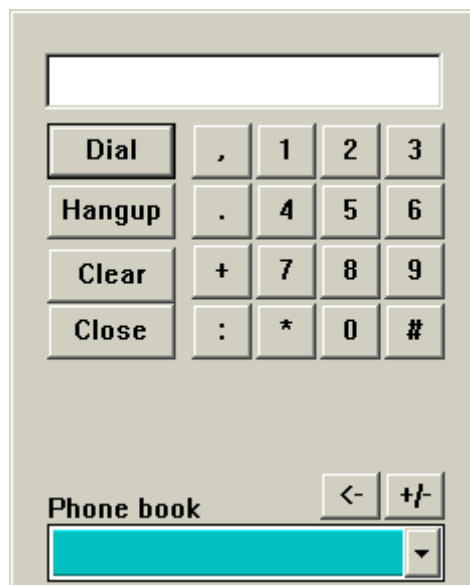


, you need to enter the password within 60 seconds.

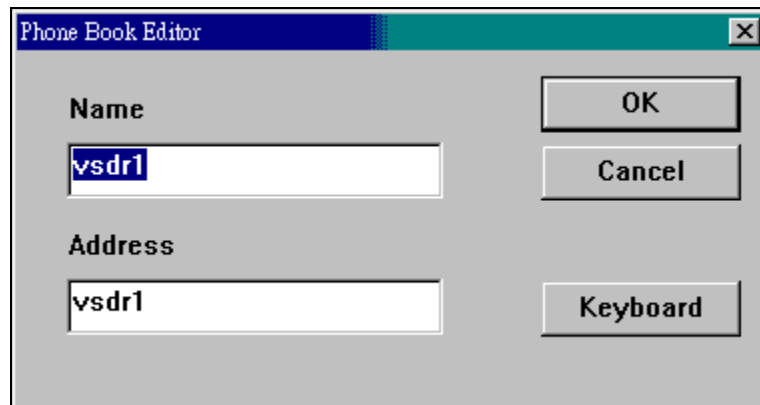
Only the Administrator has the right to access the set up function; when entering the setup function for the first time, the default password for Administrator is 99999999 (the number 9, 8 times).

How to preset Network station's name and address

1. To edit old or add new Network DVR's name and address. (Up to 1024 stations)



- a. Click the down arrow to select the DVR.
- b. Press **+/-** to display a dialog box allows user to enter the station's name and address.




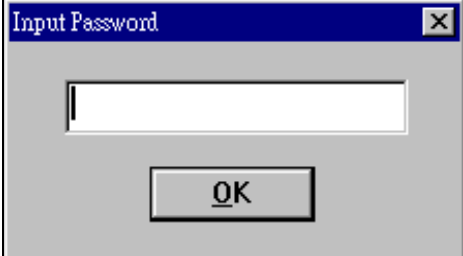
- c. Press **OK** to store the name and address into phone book.


2. Use the phone book to connect to the DVR.

- a. Click the phone book list down arrow to select the DVR.
- b. Press **Dial** to connect to the DVR you selected.
- c. Press **Hangup** to disconnect from the DVR.
- d. Press **Clear** to clear the message box.
- e. Press **Close** to hide the phone book.

Chapter 3 System Setup

Click the  button. System will display a dialog box requiring the user to enter the

password . There is also a digital keyboard on the screen to help

user enter the password  , you need to enter the password within 60 seconds..

Only the Administrator has the right to access the set up function, if entering the setup function for the first time the default password for Administrator is 99999999 (the number 9, 8 times).

System's setup

A. On line mode

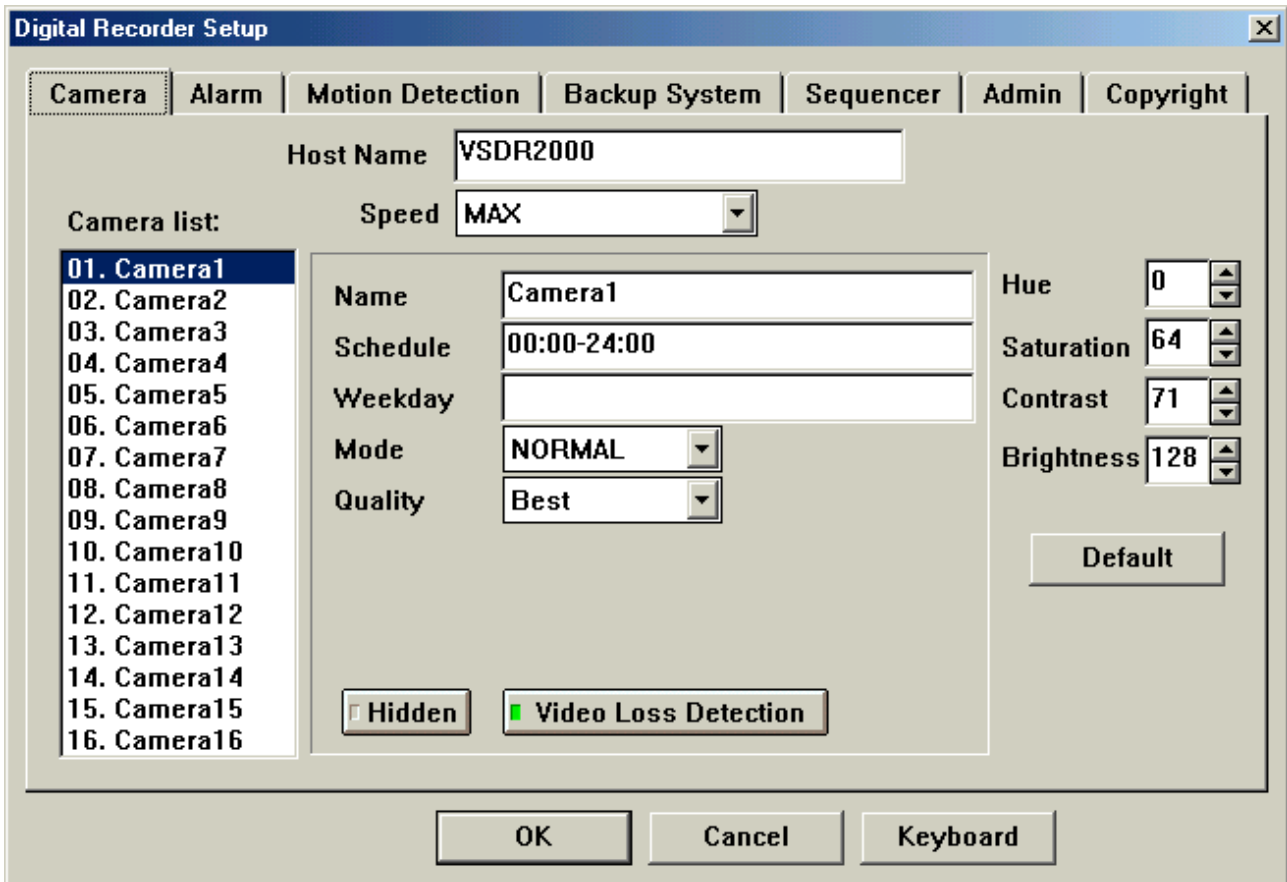
To change settings at DVR site you must be on-line with that unit and system will ask for the DVR site administrator password.

B. Off line mode

To change setting at receiver site you must be off-line from DVR site and system will ask for the Receiver site administrator password.

Setting camera properties

Select the **Camera** tab. The system displays the following:



(The above illustration shows the camera setup of 16 channel model. When connecting to 4/8 channel models, there will be 4/8 cameras on the camera list)

Host name: This is the name of the unit.

Speed: This is the Recording speed of the unit, listed in frames per second (fps). This speed is reflected on the main status display screen. The frames per second on this unit is divided by the number of active cameras.

For example, if a unit is running at 20 frames per second and there are five active cameras, there will be 4 frames for each camera captured per second.

Speed Individual Setting: With this setting, each active camera on this unit will record at a speed independent of the other cameras. If this entry is selected under the speed box, an additional box **Speed 2 fps** will appear for each individual camera that will allow the user to customize the speed for that camera.

Name:

This is the name of the camera or location for display on the monitor.

Scheduled:

This field indicates continuous recording time for the camera. The default is 00:00-24:00 which indicates a 24 hour period recording time.

To change the continuous recording time for a particular camera, change the entry. For example, to record from 2pm to 4pm, type: "14:00-16:00".

To list more than one recording time, insert a comma (,) to indicate breaks in recording time. For example, to record from 10am to 2pm and from 4pm to 10pm on a camera, type: "10:00-14:00, 16:00-22:00".

To record times that would go past midnight (24:00), break the scheduled recording time into two parts. For example to record from 10pm to 6am, type: "22:00-24:00, 00:00-06:00".

If you leave the Scheduled Recording Time entry blank for a camera, the camera will only record if it is set up to record by trigger through alarm or motion detection. If camera inputs will not be used, erase the scheduled recording times from the unused cameras to ensure that it will not record anything into the unit and take up hard drive space with blank recording from unused camera inputs.

Weekday:

Use this field if you want a camera to record on certain days of the week.

Enter: 1 = Monday
2 = Tuesday
3 = Wednesday
4 = Thursday
5 = Friday
6 = Saturday
0 = Sunday

For example, if you want a camera to record on Mondays, Wednesdays and Fridays, type in the field: "1, 3, 5". Separate the days by using commas.

If this field is left blank, then the camera records for all days according to the schedule in the Scheduled Recording Time field.

Note: The weekday setting for cameras cannot, for example, record events on Monday from 10am to 2pm and then on Tuesday from 1pm to 4pm. The weekday settings will use the same scheduled recording time of all the days indicated in this field.

Mode:

This selects the type of compression for the camera:

Normal mode (Wavelet compression): Normal mode produces better image quality but reduces the storage time. If the camera uses the Pan/Tilt/Zoom feature, then Normal mode must be used.

Enhance mode (Modified JPEG compression): Enhanced mode uses proprietary compression and can store 2 to 3 times as much as the Normal mode.

Quality:

Select the image quality from Low, Fair, Good, Better, or Best. More space on the hard drive is used with higher quality images.

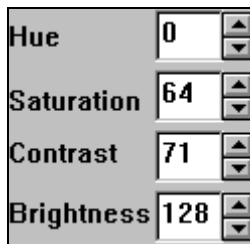
Hidden:

Select this to hide the individual camera from the live screen. If a camera is hidden, that means that the camera will not show up on the live screen display and the button for the camera on the live screen toolbar will be grayed out, indicating that the camera cannot be activated. This will not affect the recording of the camera into the hard drive.

Video Loss Detection:

When the Video Loss Detection is active, the system will automatically detect cameras that are not properly connected to the unit. If video signal loss is detected, the corresponding camera digital light will turn red.

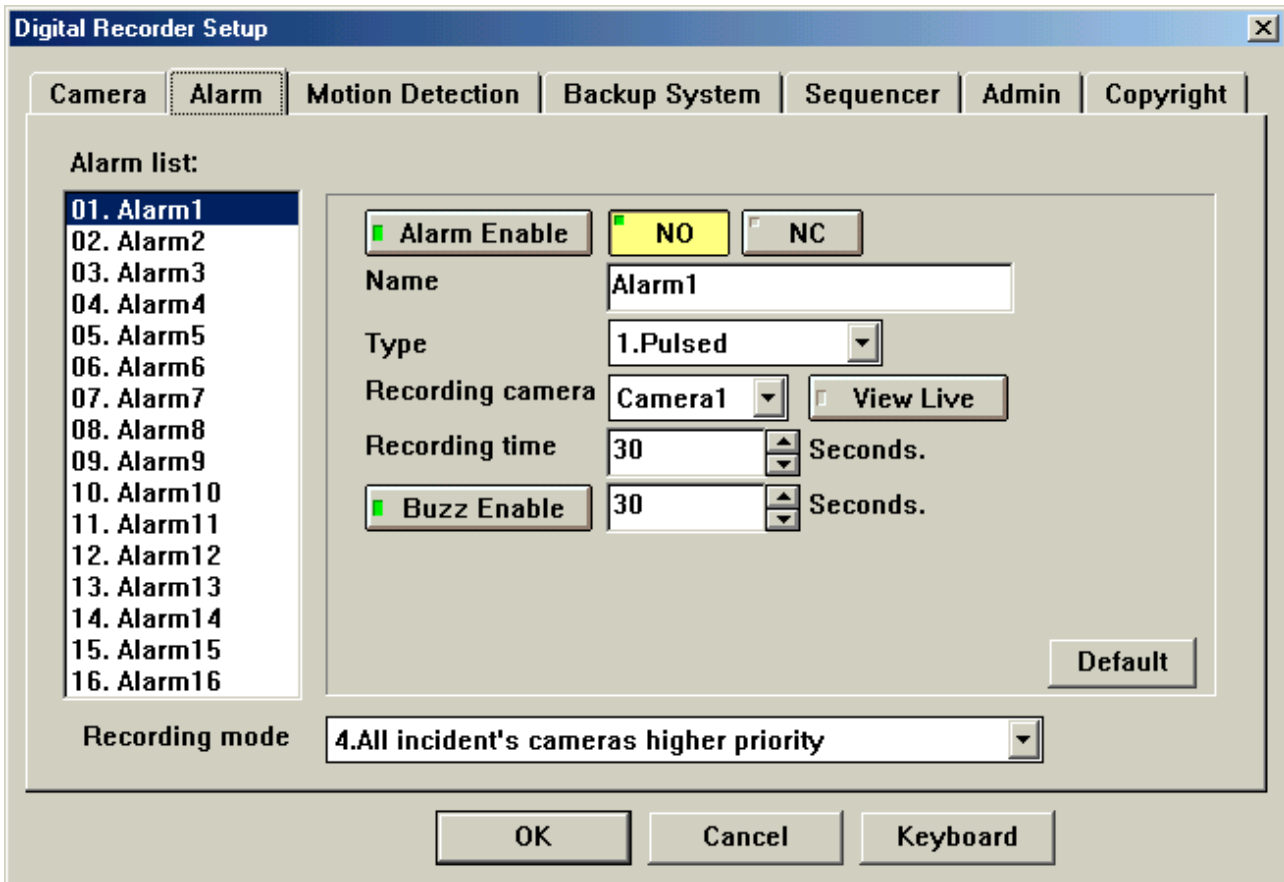
If the Scheduled Recording Time field contains a time, then the unit assumes that the camera position should have a camera attached to the input and will likewise appear as red under Video Loss Detection.



On this panel, adjust the color, brightness, and contrast of a specific camera chosen.

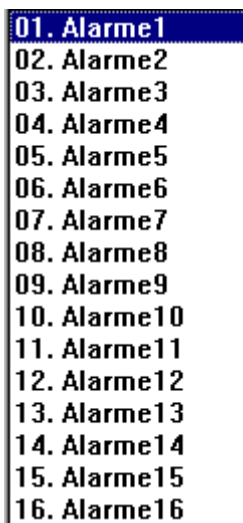
Setting Alarm properties

Select the **Alarm** tab and the System displays the following:




(The above illustration shows the alarm setup of 16 channel model. When connecting to 4/8 channel models, there will be 4/8 alarms on the alarm list)

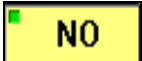

1. Select an alarm.



Click on the list to select from Alarm1 to Alarm 16 (for 16 channel model), or Alarm1 to Alarm 8 (for 8 channel model).

2. Setting individual Alarm Properties

- a.  Click on this button to enable (green light) or disable the alarm function.

- b. Select **Alarm type**  (Normal Open) or  (Normal Close).


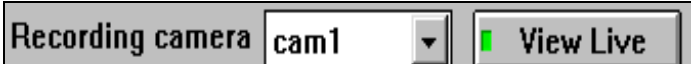
- c. **Name** Default is Alarm1 to Alarm 16. The characters in the Name column for the Alarm chosen can be changed by keyboard.

- d. **Type** Select between Pulsed Input or Latched Input.


Pulsed Input: The recording time depends on the Recording Time specified in this setup menu.



Latched Input: The recording time depends on the alarm sensor ON/OFF. If user does not acknowledge the alarm, the system will return to normal recording speed as soon as the Recording Time expires.

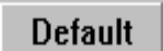
- e. **Recording Camera:** Select the recording camera corresponding to the alarm. Usually Alarm 1 corresponds to Camera 1, Alarm 2 corresponds to Camera 2, etc.

- f. Press the  button to turn ON (Green light) or turn OFF the View Live function. If this function is ON, while an alarm occurs, the system will switch to the Live Mode immediately. For example: 

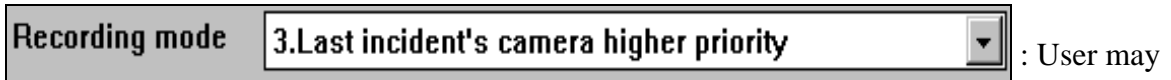
The user has turned on Camera 1 View Live function, when Camera 1 alarm occurs, the user will see camera 1's live image displayed on the monitor immediately.

- g. Recording time  seconds: Use the mouse to click on the up / down arrow to select the recording time after alarm is activated.

- h. Press the  button to turn ON/OFF alarm buzzer, then select alarm buzzer time  Seconds.

- i. Press the  button to cancel the setting and use the system default value.

Recording mode setting



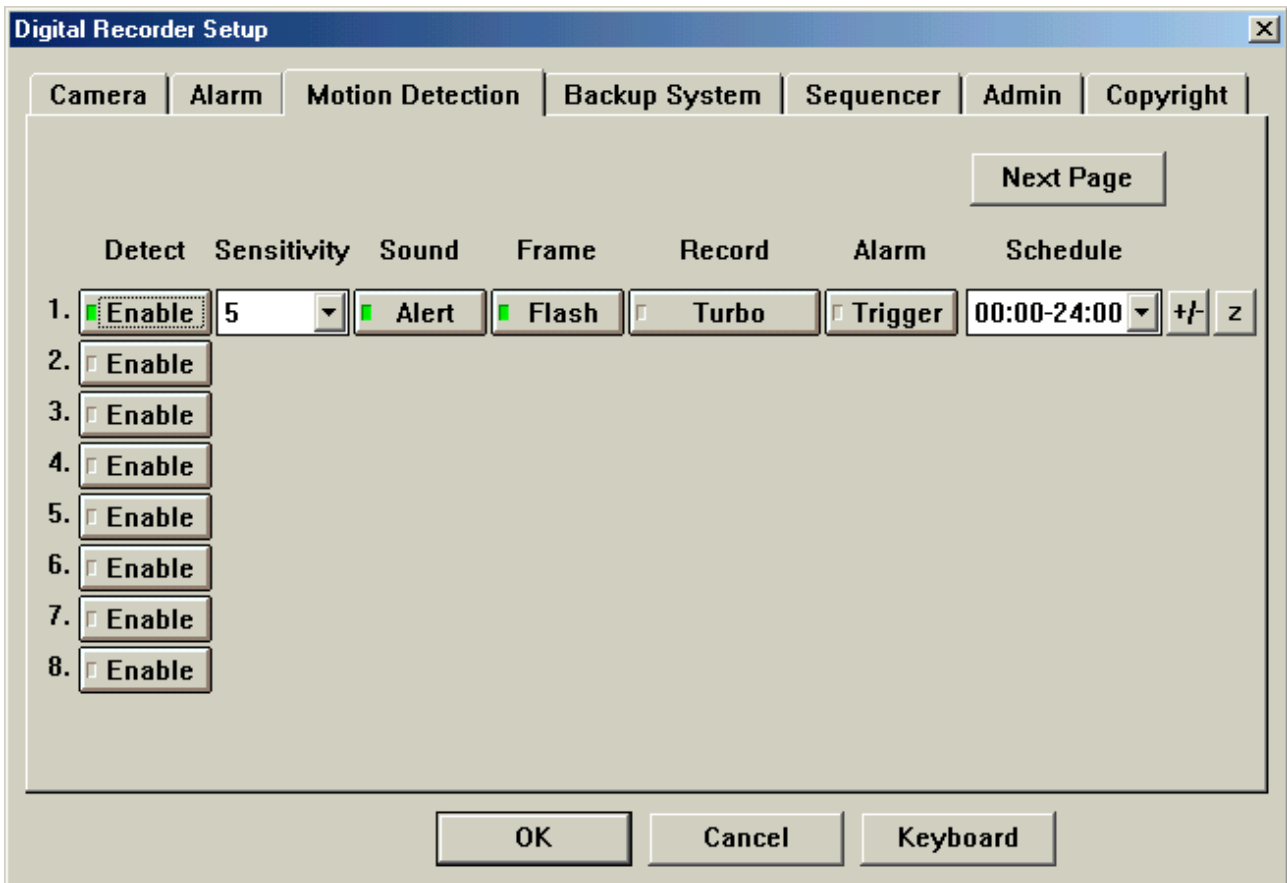
select an alarm recording mode:

- a. **Record last incident's camera only:** Record only the last-alarmed camera.
- b. **Record incident's camera only:** Record all the alarmed cameras.
- c. **Lasts incident's camera higher priority:** Speeds up the recording speeds of the last-alarmed camera; Other cameras will still record but at a lower recording rate.
- d. **Incident's cameras higher priority:** Speeds up the recording speed for all the alarm cameras. Other cameras will still record but at a lower recording rate.

Motion detection function

Select the **Motion Detection** tab, system displays as follows

1. **Detect** Press the **Enable** to turn ON or turn OFF motion detection
2. After turning ON the motion detection, user can select the following setting.



(The above illustration shows the motion detection setup of 16 channel model. When connecting to 4/8 channel models, there will be 4/8 motion detectors displayed)

- a. **Sensitivity** The higher the value the higher the sensitivity of the motion detection.
- b. **Sound** Click on **Alert** to turn ON (LED turns green) the alert sound when an activity occurs.
- c. **Frame:** If **Flash** is turned on (LED turns green), a red outline box will appear on the corresponding picture when system detects activities.
- d. **Record** Click on **Turbo** to double the recording speed.
- e. **Alarm** Click on **Trigger** to turn ON (LED turns green) the alarm function. When the alarm function is ON and the corresponding camera activity occurs, it will handle it as a normal alarm and will register to the history event log.
- f. **Schedule:** schedule display.

g. To change the schedule press **+/-** and the system displays the following,

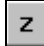
The screenshot shows a dialog box titled "Edit Schedules" for "1. Camera 1". At the top, there is a text input field containing "00:00-24:00". Below this is a table with the following data:

Schedule	Sensitivity	Sound	Frame	Record	Alarm
00:00-24:00	10		Flash	Turbo	




At the bottom of the dialog are buttons for "OK" and "Cancel". Above the table, there are buttons for "Prev", "Next", and "Refresh".

Enter a new schedule here, and press **Refresh** to accept the changed schedule. Schedules are separated by “;”.

4-zone motion detection setting

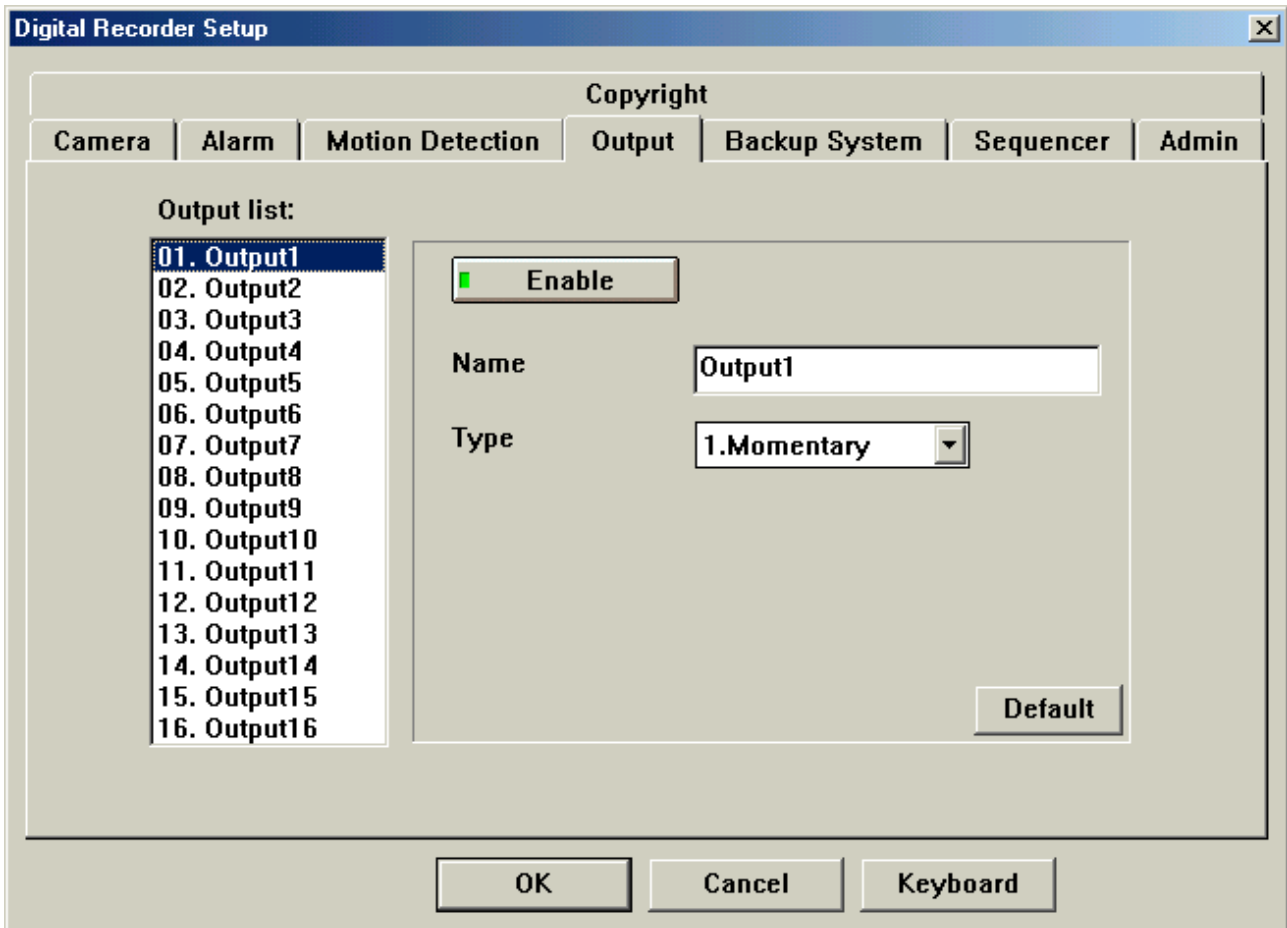
System allows user to specify up to four-zone motion detect area for each camera. At the selected camera click  a full screen camera image will be displayed.




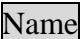


- Use  to select zone.
- Use  to select motion detection zone. Position the pointer where you want to detect. Drag the mouse to resize an area.
- Use  to cancel the zone that you selected.

Setting relay output properties (Optional)

It is an optional function user need to buy at least one piece of ADAM-4520 (RS-232 to RS-422/RS-485 CONVERTER) and one piece of ADAM-4050 Relay Box (one relay box could control 8 relay output).



(The above illustration shows the output setup of 16 channel model. When connecting to 4/8 channel models, there will be 4/8 outputs displayed)

-  Click this button to enable (green light) or disable the relay function.
-  Default is Relay 1 to Relay 8. The name in the Name column for the Relay chosen may be typed in.
-  Select between Momentary or Latching.
- Press the  to set back to system default value.

Setting Backup properties (Available only on units with Hot Swap Drive)

The screenshot shows the 'Digital Recorder Setup' dialog box with the 'Backup System' tab selected. The 'Medium Name' field contains 'NONAME'. Under 'Backup mode', 'Cyclic Backup' is checked. Under 'When backup medium is going to format ...', 'Alert' is checked. Under 'Alert while medium is under', 'Alert' is unchecked and the percentage is set to 5%. Under 'While backup medium is full ...', 'Alert' is checked. At the bottom are 'OK', 'Cancel', and 'Keyboard' buttons.

Name: Insert the name of the Hot Swap Hard Disk here.

Backup Mode

Cyclic Backup: If this is checked and the Hot Swap Hard Disk is full, the system will backup and overwrite the data from the beginning.

While Backup Medium is full...(This function is available when it's not Cyclic Backup mode)

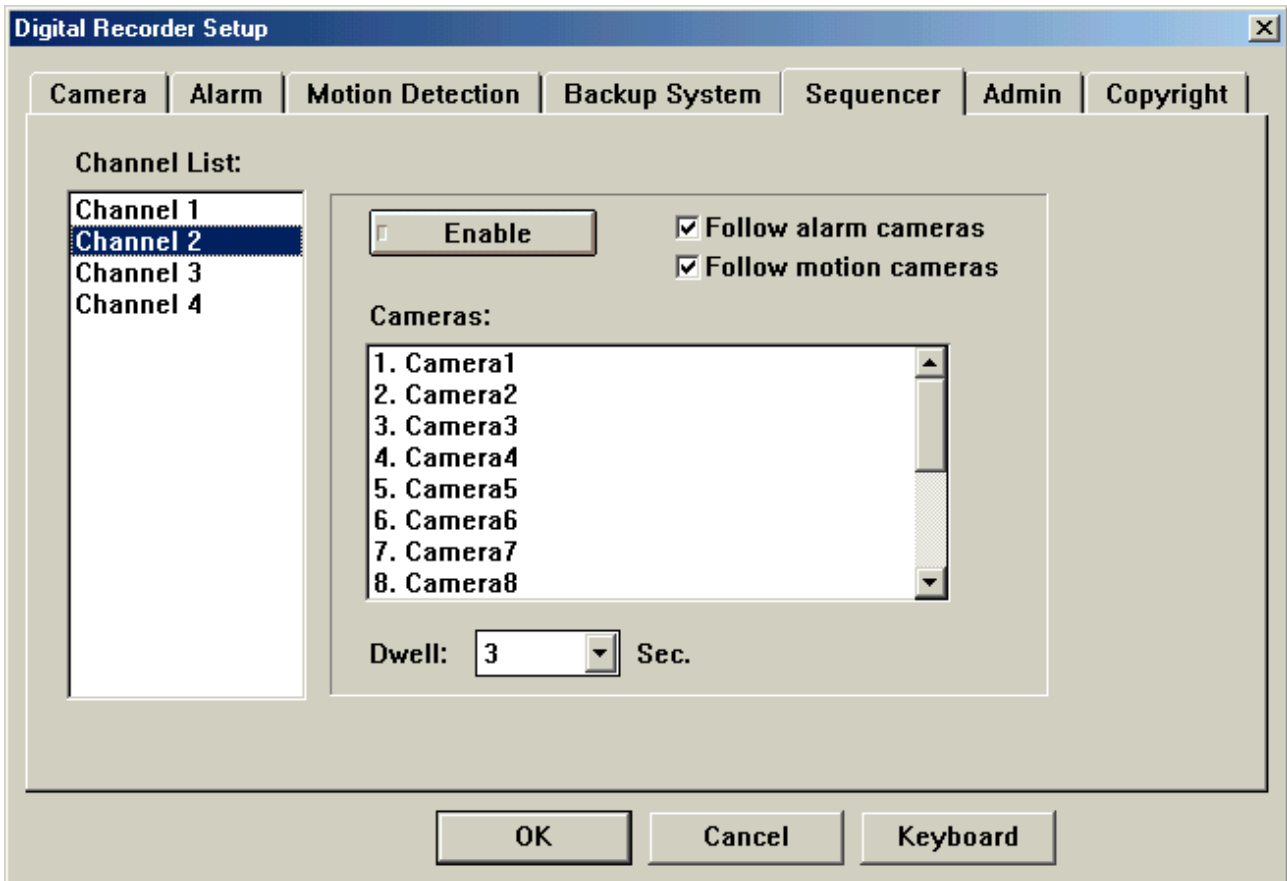
Alert: Selecting this will cause the buzzer to sound when the Hot Swap Hard Disk is full and alerts the user to change Hot Swap Hard Disk.

When the Backup Medium is going to format...

Alert: Selecting this will cause the buzzer to sound when the Hot Swap Hard Disk will be formatted.

Sequencer function (Not available on slim size model)

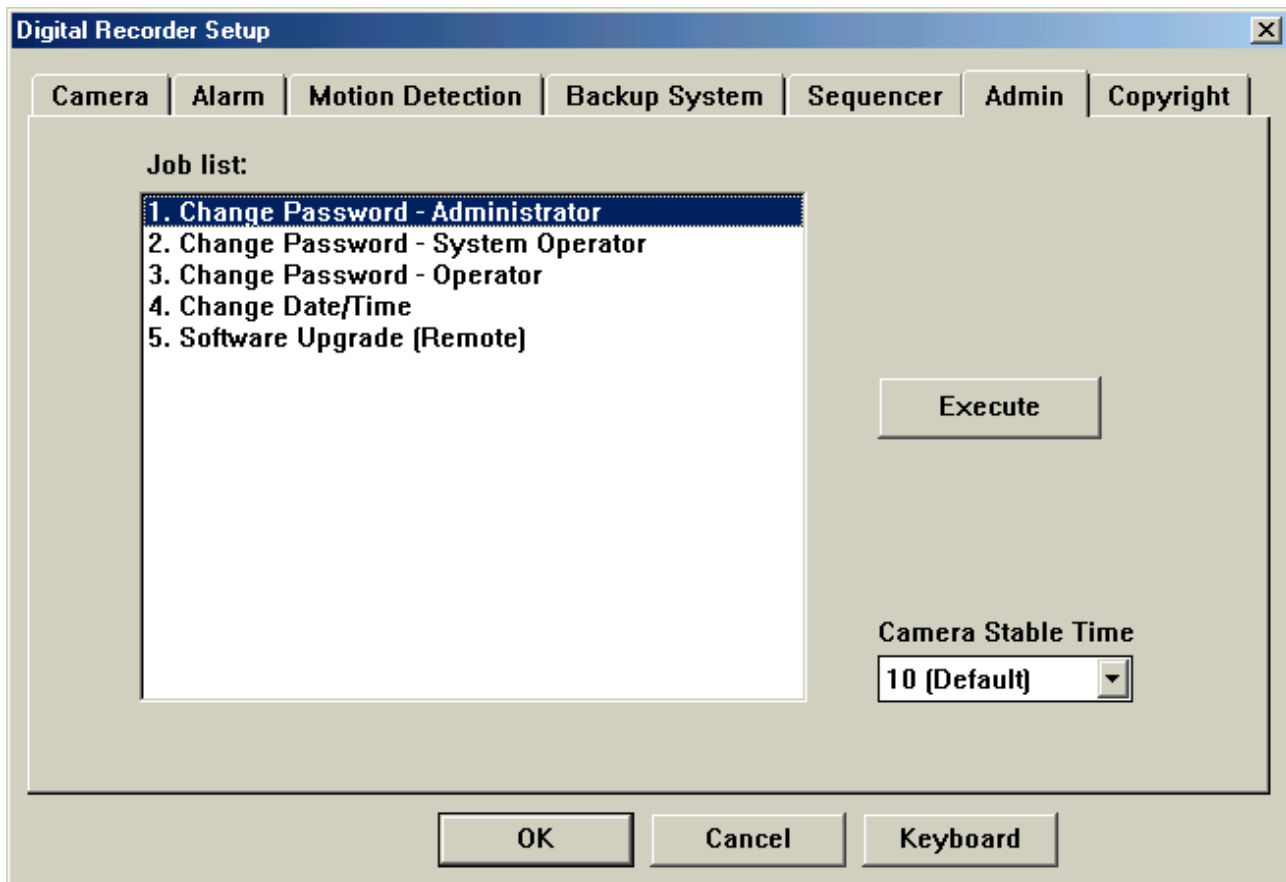
User can connect a CCTV monitor to VS-168 (VOUT connector), and do the following setup to process the sequencer function.



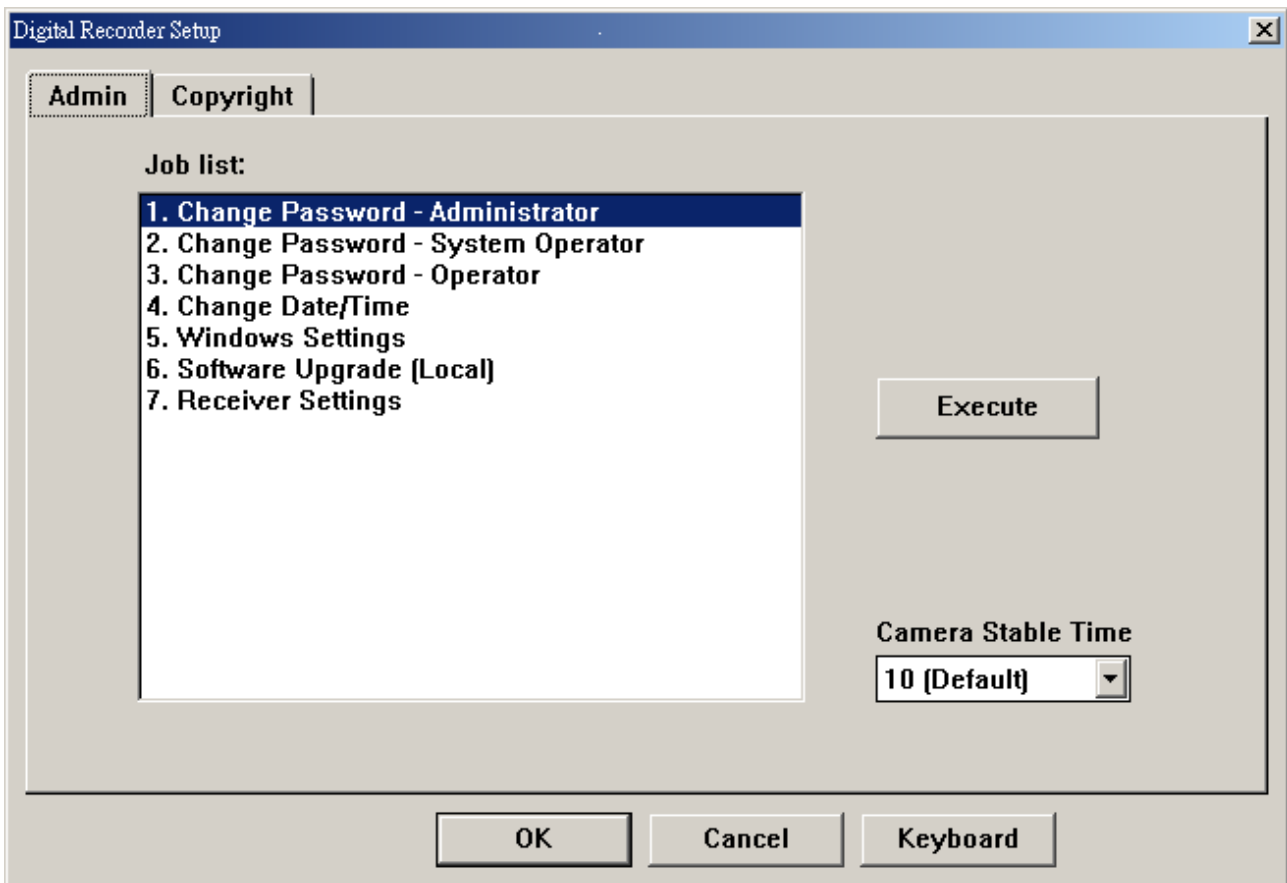
1. Selected desired camera from cameras list by clicking the cameras desired.
2. **Dwell:** **Sec.** Set the dwell time between each camera.
3. Press to turn ON or OFF the sequencer function.
4. **Follow Alarm Cameras** – When alarm occurs, the image will be shown immediately on screen.
5. **Follow Motion Cameras** – When motion is detected, the image will be shown immediately on screen.

Administration setting (On line mode)

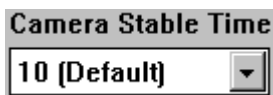
Select the **Admin** tab; System displays the following:



Administration setting (Off line mode)



Camera Stable time



This means the stable time between each camera switching.

Default = 10 means the stable time is

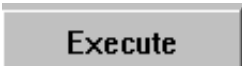
$20\text{ms} \times 10 = 200\text{ms}$ for PAL system

$16.6\text{ms} \times 10 = 166\text{ms}$ for NTSC system

If you encounter picture rolling problem, you can increase the number to solve it.


Warning: Do not select more than 18, otherwise the DVR recording speed will decrease dramatically.

Change Password-Administrator

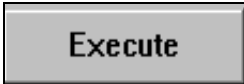
To change the Administrator password, from job list Select **Change password-Administrator** and press ; System displays a dialog box on the screen.




A dialog box titled "Change Password" with a close button (X) in the top right corner. It contains three text input fields labeled "Old Password", "New Password", and "Verify New Password". Below the fields are two buttons: "OK" and "Cancel".

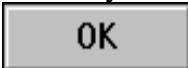
Enter the old password, new password and verify new password then press  to accept the new password; System will use the new password to access the system in the future.

Change Password-System operator


The Administrator could assign and change the password for the system operator. From Job list Select **Change password-System operator** and click on , system will display a dialog box on the screen.



A dialog box titled "Change Password" with a close button (X) in the top right corner. It contains three text input fields labeled "Old Password", "New Password", and "Verify New Password". Below the fields are two buttons: "OK" and "Cancel".


Enter the old password (Enter either Administrator password or System operator old password), new password and verify new password again, then click  to accept the new password; System will use the new password to operate the system afterwards.

Change Password-operator

The Administrator could assign and change the password for the operator. From Job list Select **Change password-operator** and click on , system will display a dialog box on the screen.

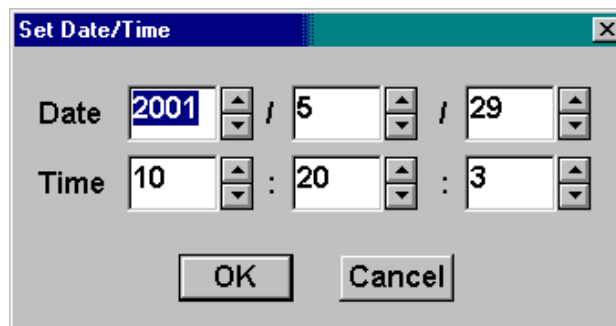


The dialog box titled "Change Password" contains three text input fields labeled "Old Password", "New Password", and "Verify New Password". Below the fields are two buttons: "OK" and "Cancel".

Enter the old password (Enter either Administrator password, System Operator password or Operator old password), new password and verify new password then click  to accept the new password.

Change Date/time

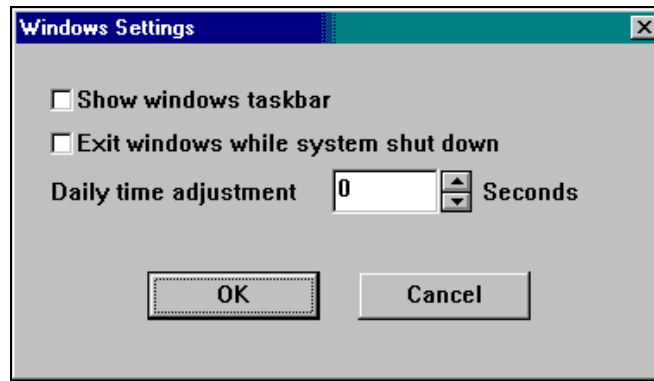
To correct the system time, from Job list select **Change Date / Time** and click ; System displays the Set Date / Time panel.



The dialog box titled "Set Date/Time" displays date and time settings. The date is set to 2001 / 5 / 29. The time is set to 10 : 20 : 3. Below the fields are two buttons: "OK" and "Cancel".

Windows Setting

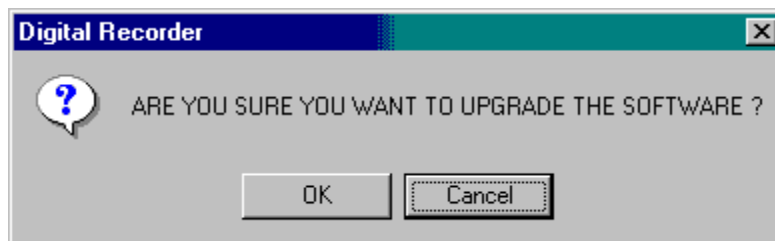
To setup windows, from job list select **windows settings** and click ; system displays a confirmation message.



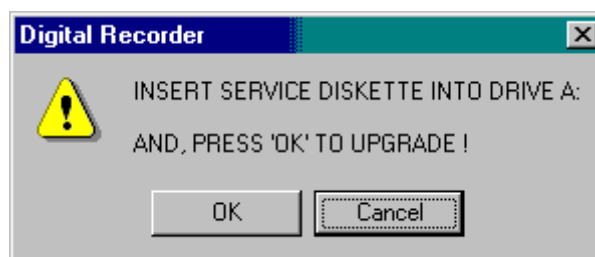
- i. If **Show windows taskbar** is checked, windows task bar will display on screen.
- ii. Use up-down arrow to increase or to decrease system daily time by seconds Seconds .

Software Upgrade

To upgrade new software, from job list select **Software Upgrade** and click ;
system displays a confirmation message as follows.

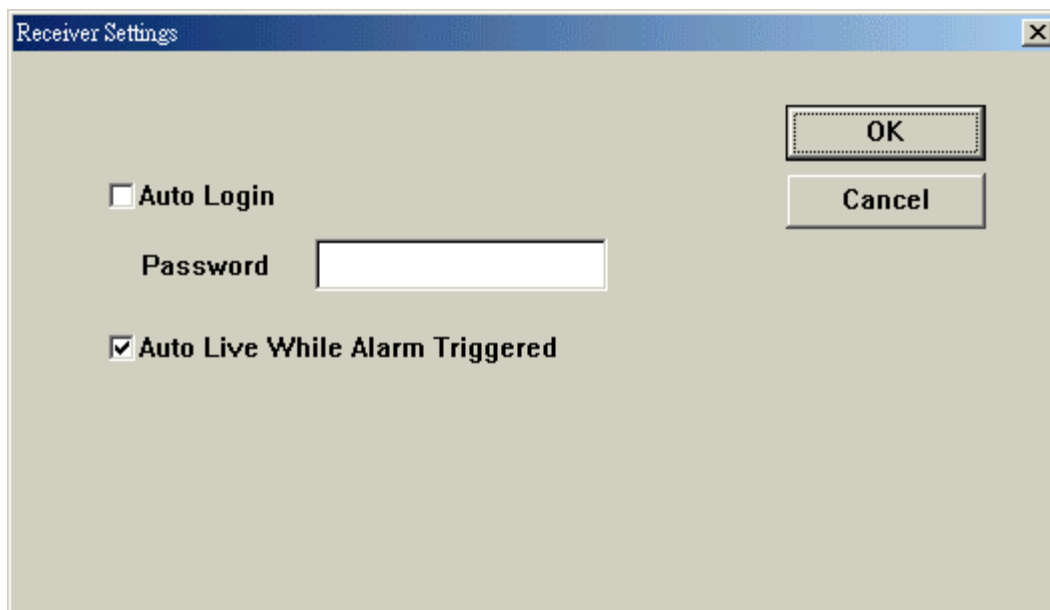


Click OK, system displays the following confirmation message:




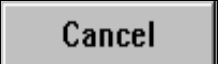
Receiver Settings

From job list select **Receiver Setting** and click **Execute** setting panel display.



1. If the **Auto Login** function is checked the Receiver will not ask for the user password and will use the Auto Login Password to login the DVR. **Password** * a Digit panel will appear on the screen to let user to enter password when “Auto Login” is not checked.
2. **Auto Live While Alarm Triggered** If this box is checked, it will switch to live mode as soon as alarm triggered.


Using the Setup function button

1. Click  to store the changed setting.
2. Click  to discard the changed setting.



Using the keyboard on screen

Press  to display:




- a. Press  to display:








- b. Press  to key in Chinese characters.
- c. Press  to hide the keyboard.

Chapter 4 Monitor live images


To view live video, click on  the live screen will now display.





How to monitor the live image

1. Press  to the first eight-camera button panel or press the  to the next eight-camera button panel. (16 channel model)
2.  Select up to eight cameras for viewing by clicking on the corresponding camera button.
3.  Click to select the image displaying size. (From 1 split windows to 16 split windows).
4. Press  button to exit the live mode.


Spot window

If  is turn on, the system will display live image in one big frame and others displayed in smaller size frames. When you use the mouse to select any of the smaller images, the system will switch that frame to the live frame on screen.


Toolbar control

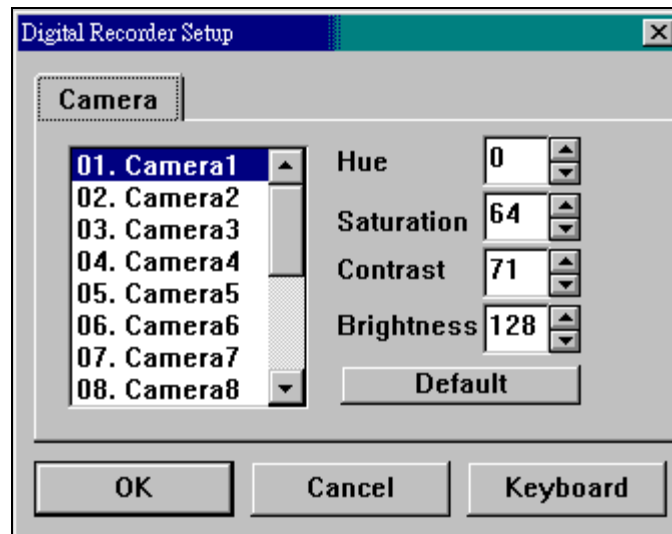
Click  to hide the toolbar. To show the toolbar right click the mouse or click , the system will display a dialog box asking user to enter the Administrator or system operator password.


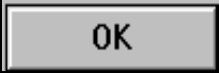

Full screen display of a camera

When you are in 1/4, 1/9, 1/16 live display mode, point on the desired camera display panel and left click the mouse. System will display that camera in full screen. To return to normal screen display, left click the mouse or click . If toolbar is locked and user selects desired camera display in full screen, it will automatically return to normal size in 10 seconds.

Color Control

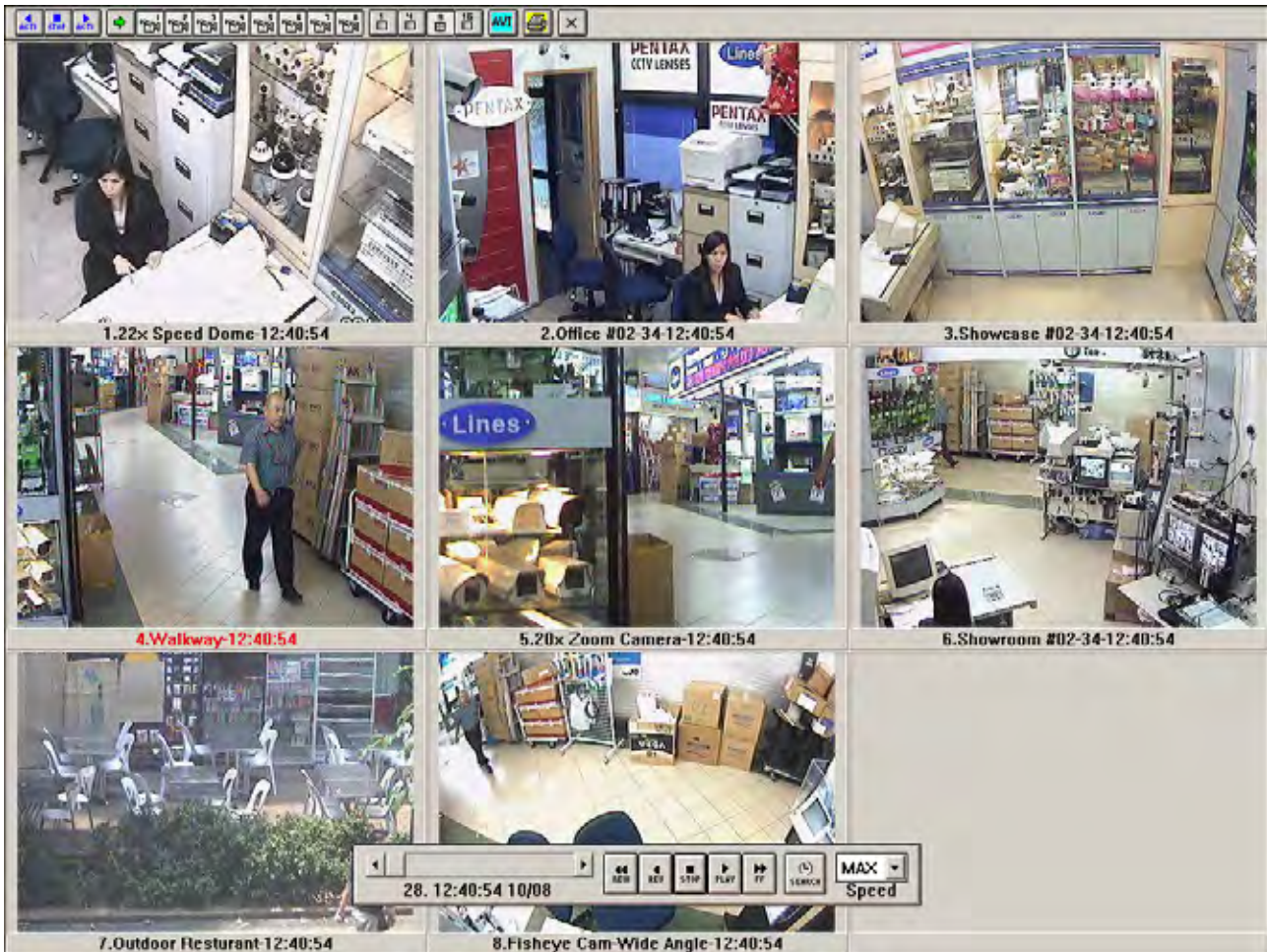
Click  button (Administrator password or system operator password is required) and the system displays:











- On this panel, adjust the Hue, Saturation, Contrast and Brightness for all cameras.
- Click  to use the system default value.
- Click  to store the setting.
- Click  to discard the setting.

Chapter 5 Play back the Recorded Images

Press **Remote Play** to enter the DVR site playback menu to view the recorded images in hard disk. (Receiver site must be on-line DVR site and system will ask for the DVR site



Control Playback function

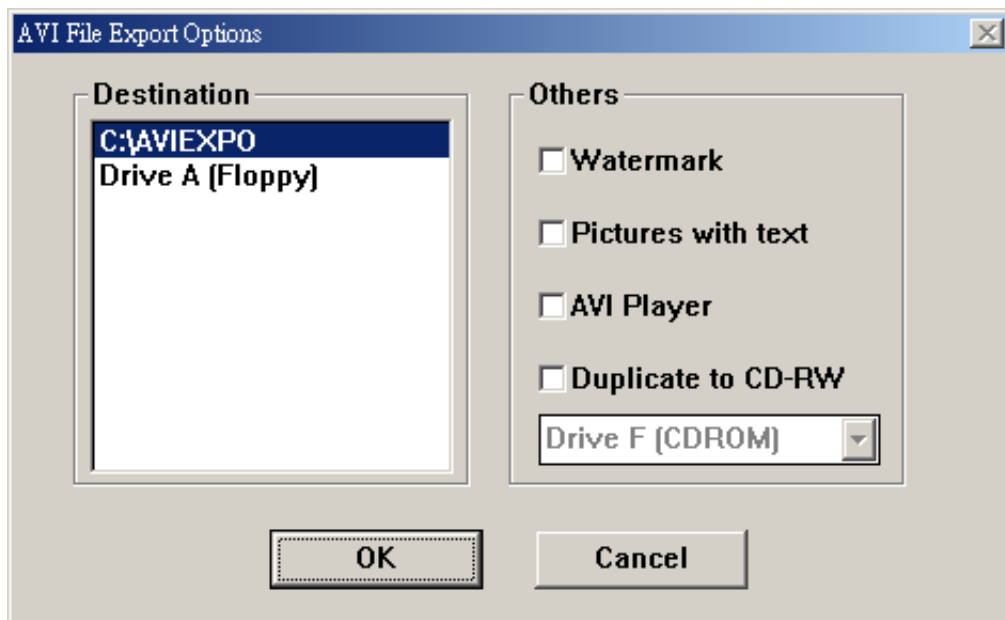
1. Press the right button of the mouse to show or hide the playback function's control box.
2. Press  to reverse activity playback.
3. Press  to stop the playback.
4. Press  to forward activity playback.
5. Press  for the previous eight-camera button or Press  for the next eight-camera button.(for 16 channel model)
6.  Indicates which camera has been recorded to view. To play back the recorded image on the screen, select the camera channel desired by clicking the camera button. (For figure above Camera 1, Camera 2, Camera 3 has been turned on).
7.  Click on this button to select the playback video display size.
8.  Press to exit this function.

Export the image record as AVI file

- a. Select the cameras that you want to export.
- b. Press AVI system displays a dialog box as following:



- c. Press **ok** system will display a dialog box to select the file destination and other function. If you wish to encode the exported files then select Watermark.

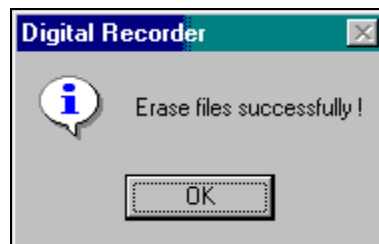


- i. If you wish to encode the exported files then select Watermark. This will prevent the AVI files from being edited again.
- ii. If you wish to the exported files with information then select Pictures with text.
- iii. If you wish to include the AVI player then select AVI Player.
Note : You can install it into your PC again from the supplied User-Manual CD, if the included AVI player fails
- iv. To export the images to CD, please select Duplicate to CD-RW and choose the corresponding Drive letter from the drop down list. (*Available on units with CD Writer*)
- v. If the disk or Drive D contains data, the system will ask to erase before saving the data.
- vi. After pressing OK to confirm, press the Play button to begin saving the files onto the selected location. Press Close at anytime to stop.

- vii. These saved AVI files will play on any AVI player such as Windows Media Player. If the AVI Player option is checked, the AVI Player will be saved in the same location as the exported files.
- d. Press OK, if the diskette is containing data, system will display a dialog box to confirm the data deleting.



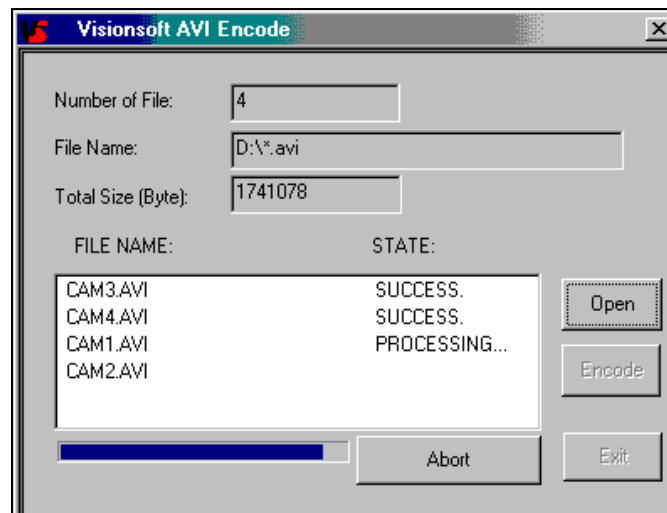
- e. Press OK and data will be erased.



- f. When erase is done system will display dialog box, then press OK to confirm.



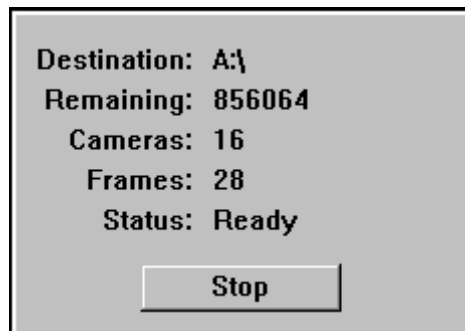
- g. Press PLAY to playback the record, user could press STOP anytime to stop the writing to the diskette.
- h. Press STOP to end the processing and the following dialog will be displayed and encoding of the AVI files will begin. When the encoding is done the dialog will automatically closed.



- i. If a diskette is full then following dialog box will be displayed.



- j. Press OK to closing file exporting.



- k. There are two ways to play exported AVI file:


A. Use "Windows Media Player".

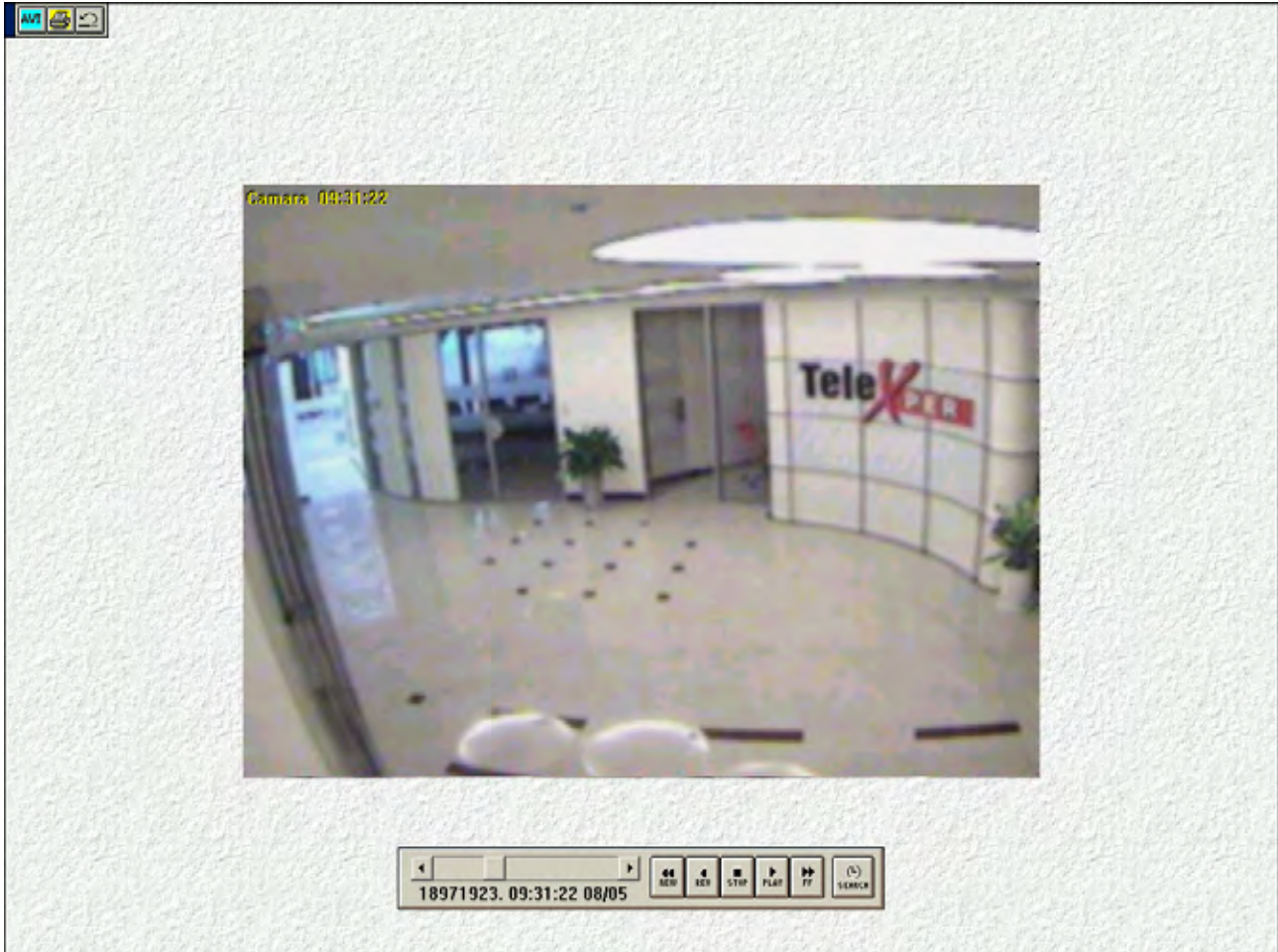
- i. Click Windows' "START" button.
- ii. Select Accessories from "Programs".
- iii. Choose Entertainment from "Accessories"
- iv. Then select Windows Media Player from "Entertainment"

*** The preferred windows version is Windows 98 Second Edition or later version.


B. Insert the diskette to a desired PC, select the AVI files from "My Computer" and double click it, then the file will start to play.

Full screen playback a camera



When you are in 1/4, 1/9, 1/16 playback mode, point to the desired camera display panel and left clicking the mouse, then single view of image will be shown on the screen. To return to normal screen display, left click the mouse or click on .

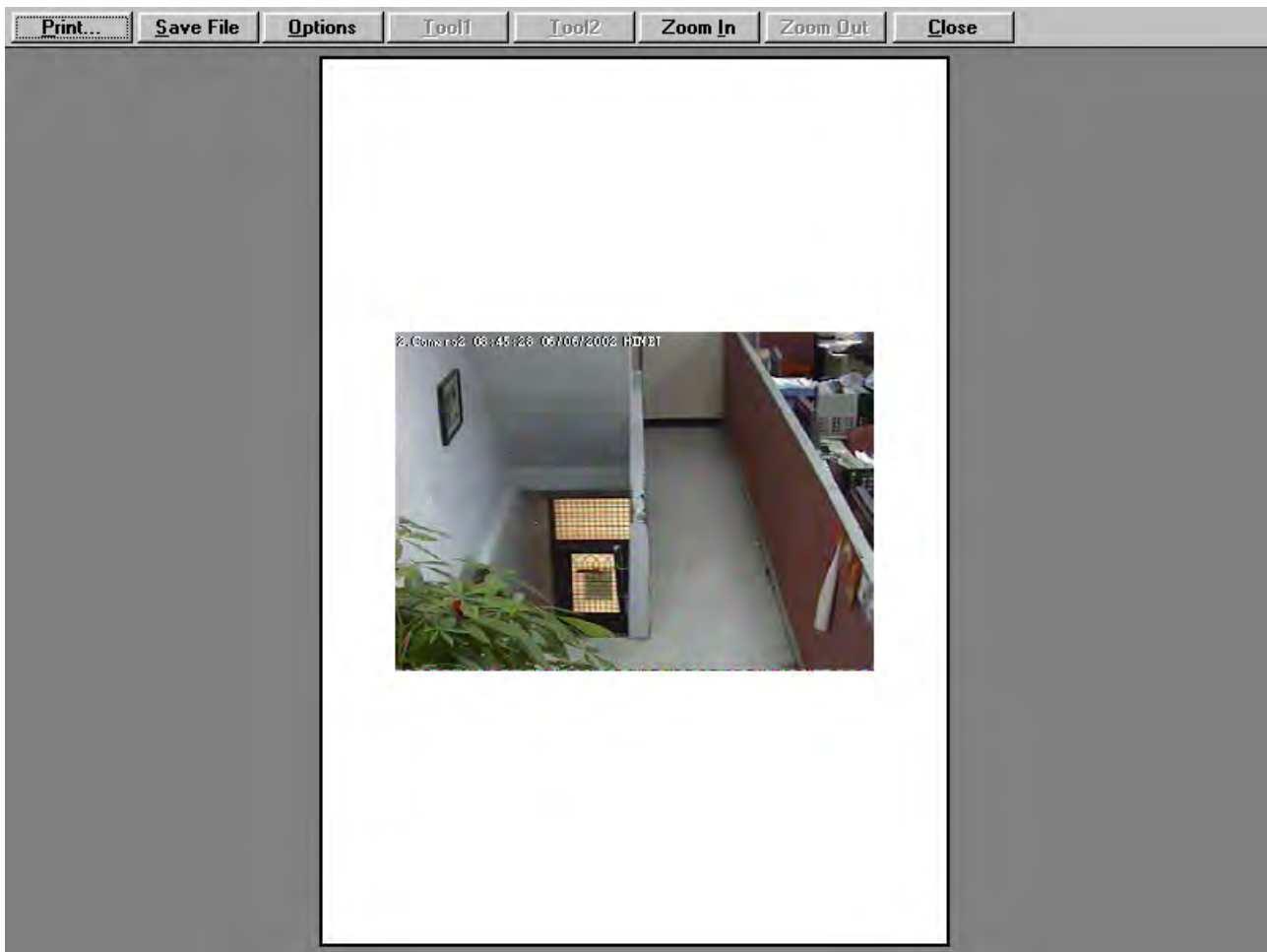




Digital zoom

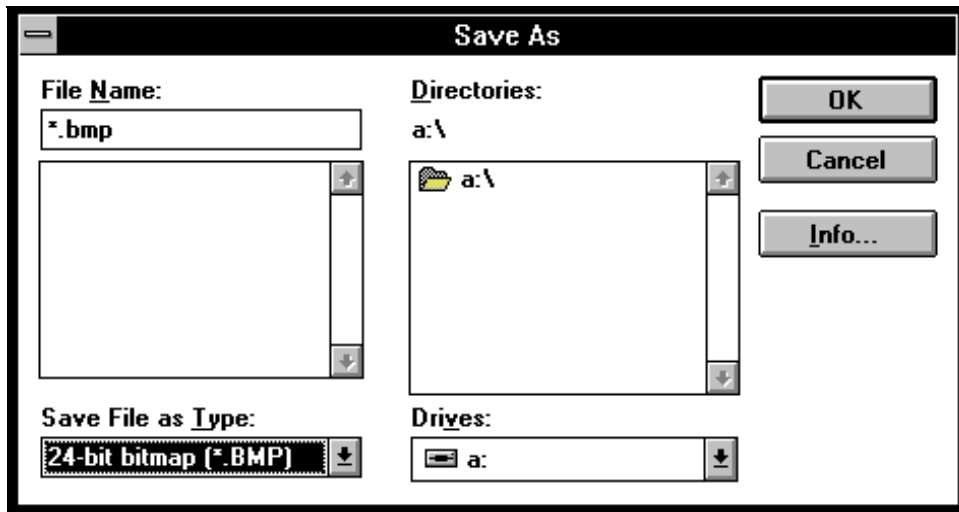
On the single view of image point the mouse to the desired area, click left button of mouse to enlarge the area by 4 or 16 times the original size. To quit digital zoom, right click the mouse or click on .

Printing Images

Before you can print, your printer must be set up and ready. To print an image picture, you will need to select which image you want to print. In process of playback, press the  button and move the mouse pointer to the image that you want to print. Left click the mouse, a full image of that picture will displayed on the screen. Right click the mouse, the screen will go back to previous display mode (the picture you selected will display the red message on message bar), then click  button; the print Manager appears.




- a.  Select print the picture on the printer.
- b.  Select the picture Save as file, the system displays:

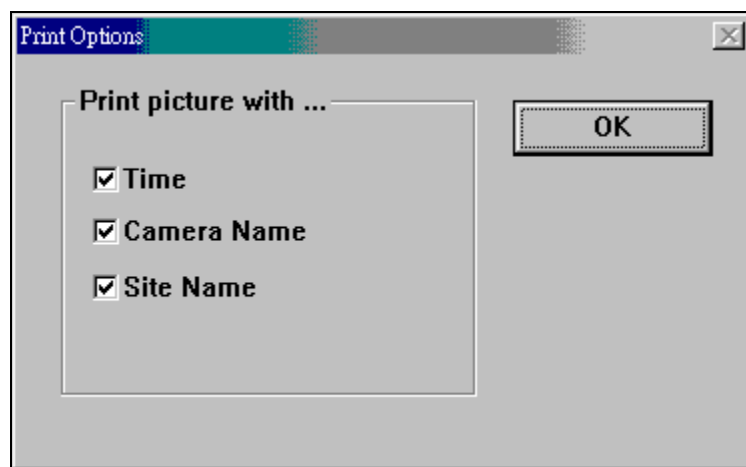




The file location and file types for the file must be specified.

Print the image on the 1.44M floppy and save File as Type:

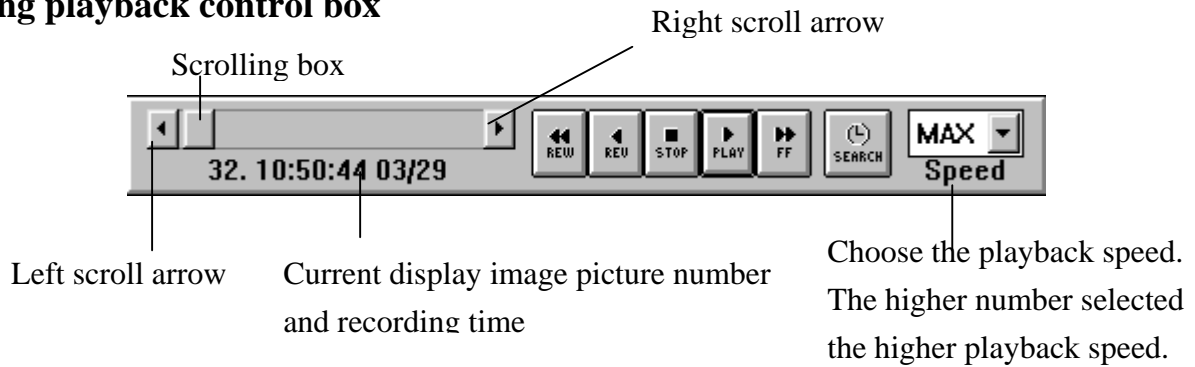
. BMP - one image frames per 1.44M floppy; read the file from **Paint Brush**

- c.  Select what to show on the picture - Time, Camera name, Site Name:



- d. It is possible also to use the ,  to zoom in or zoom out of the picture.

Using playback control box



A. Single picture display:

- a. Click the left (or right) scroll arrow, the machine will display forward or backward one picture at a time.
 1. On the above figure shown the current display picture number is 32, when the right scroll arrow is clicked, the next picture (33) will be displayed.
 2. On the above figure shown the current display picture count is 32, when the left scroll arrow is clicked, the previous picture (31) will be displayed.
- b. Speeding the display:


Click on the scroll arrow by hold down the mouse left button; system will display the picture one by one until you release the mouse.


B. Display recorded picture by scroll box :


Press the mouse on the scroll box and drag it to select the desired recording time. The machine will display the last recorded image when you release the button.


You can also do the following procedure to speed up the search


- a. To speed searching a previous time, you can click on the scroll bar between scroll box and left scroll arrow.
- b. To speed searching a forward time, you can click on the scroll bar between scroll box and right scroll arrow.


C.  Press to select the exact time for searching.

D.  Press for fast backward playing the recorded image. The more the button is clicked the faster the image runs backward.

E.  Press to reverse playing the recorded image.

F.  Press to stop the playing function.

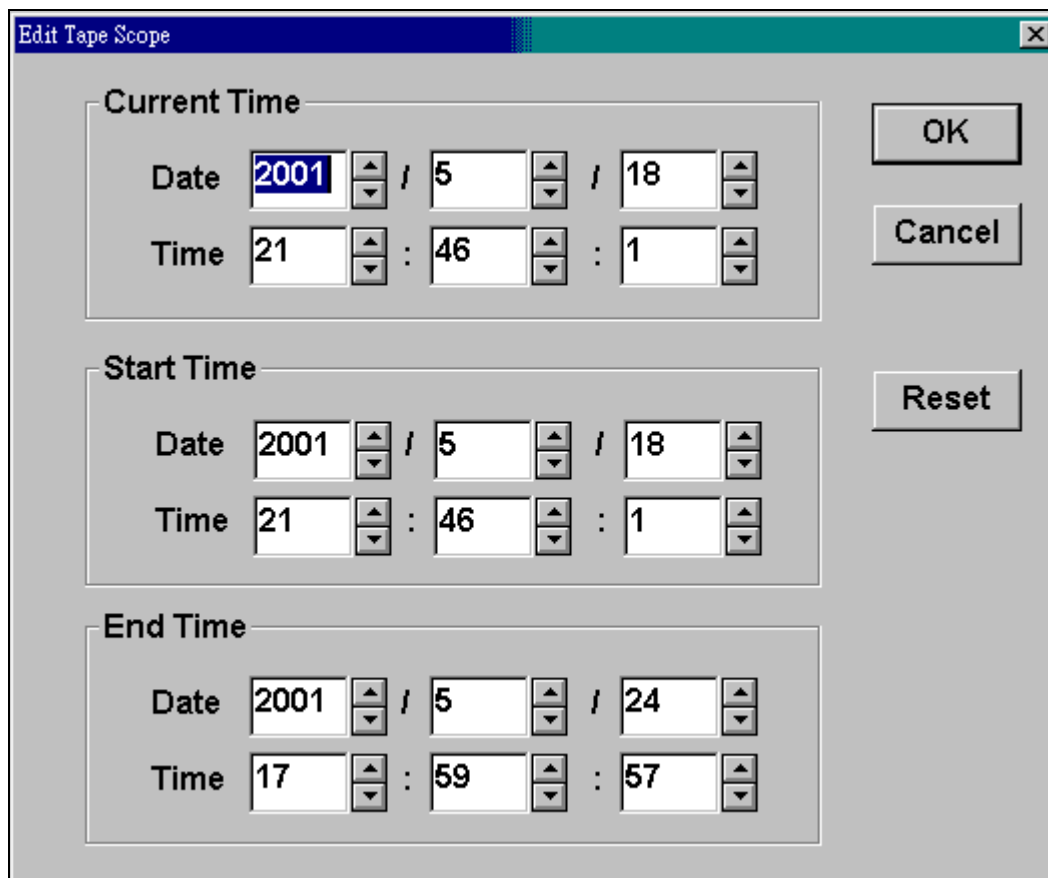
G.  Press this button to play the recorded image.

H.  Press to fast-forward the recorded image. The more the button is clicked the faster the image runs forwards.

- I. Move the cursor on top of the picture and left click the mouse to display the picture in full screen size. Right click the mouse to go back to the original display.

Finding Image data

Press  to display the Edit Tape Scope dialog box:



Edit Tape Scope

Current Time

Date 2001 / 5 / 18

Time 21 : 46 : 1

Start Time

Date 2001 / 5 / 18

Time 21 : 46 : 1

End Time



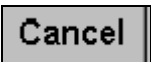
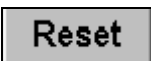
Date 2001 / 5 / 24

Time 17 : 59 : 57

OK

Cancel

Reset

1. Click  to select the exact date and time.
2. Press  button to start searching the data.
3. Press  button to cancel the search.
4. Press  button to reset the Start Time and the End Time. The machine will reset it to the beginning and the ending time of the clip.

Current Time: Current Time is bounded within the Start Time and the End Time. Within this time segment, you can set the specific time to view in the Current Time frame. The Current Time is also where the scrolling box (in the playback control box) begins.

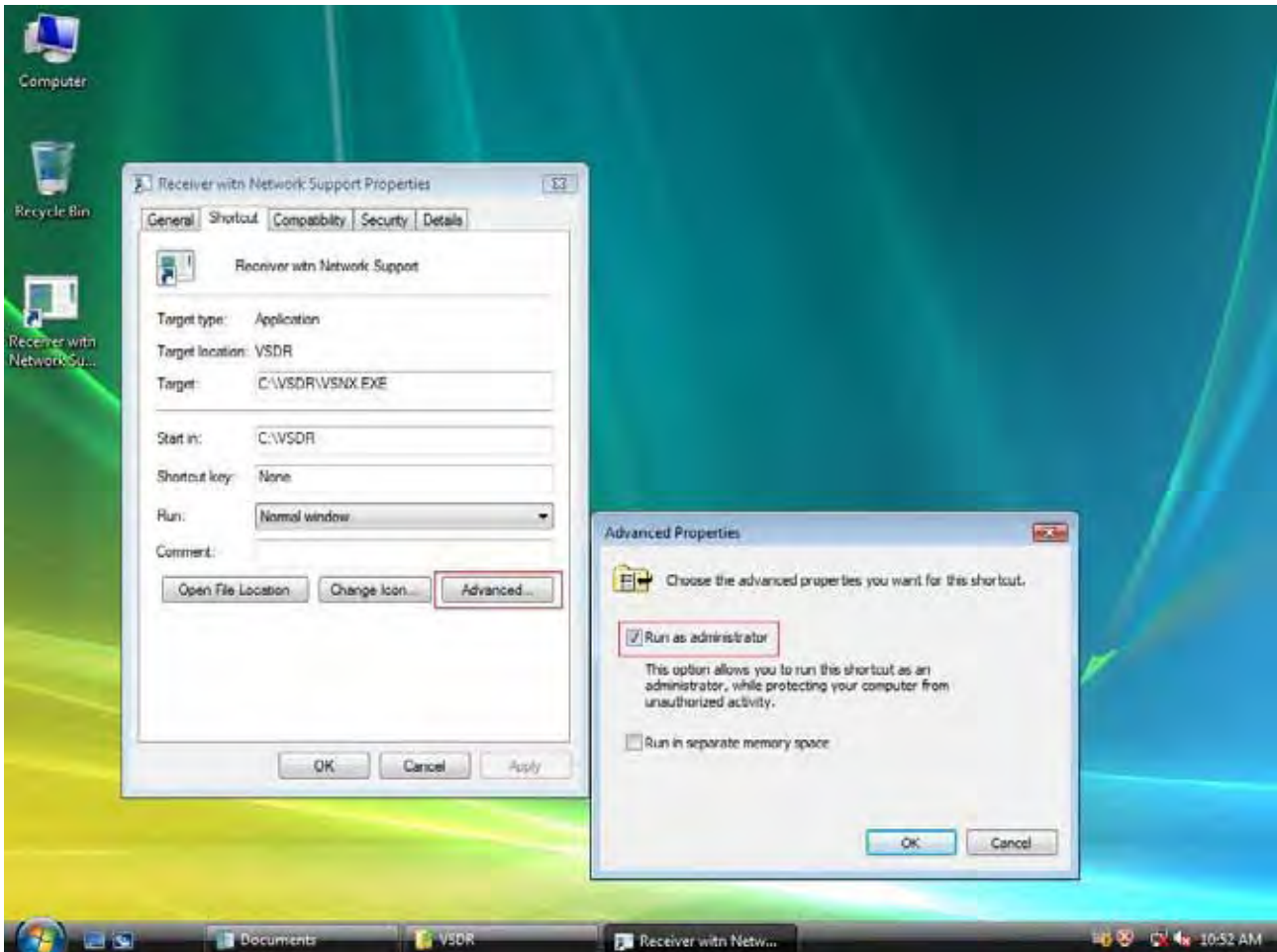
Start Time: Start Time shows the beginning time of the clip. You also can adjust the Start Time using the arrow signs but the time you set should be between the real beginning and ending time of the clip.

End Time: End Time shows the ending time of the clip. You also can adjust the End Time using the arrow signs but the time you set should be between the Start Time you set and the real ending time of the clip.

Chapter 6 How to Make Receiver work on Windows Vista 32 bits

1. Move mouse cursor to the shortcut of program, then right click mouse button, and click “Properties”.
2. Select “Shortcut” Tab in the Properties, then click “Advanced”.
3. In the “Advanced Properties” display box, check “Run As Administrator”, then click Ok. Click Ok again to quit and save Shortcut Properties.

You can run Receiver Software on Windows Vista 32 now.



Chapter 7 Q&A

Q: Is there a password protect and user level to operate the system

A: Yes, there are system administrator, system operator and operator.

Password.

- a. Administrator: Default password is 99999999, you may change it.
- b. System / Operator: There is no default password for system operator and operator, but the system administrator could assign different password for both levels.

Right to process:

- a. Administrator: System setup, exit system and delete logs
- b. System Operator: Same as Administrator but not System setup.
- c. Operator: Live