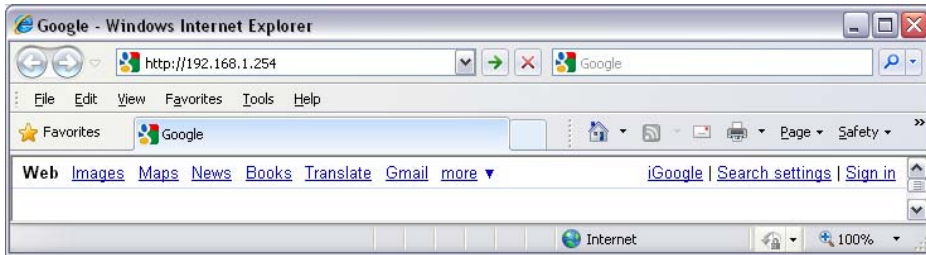
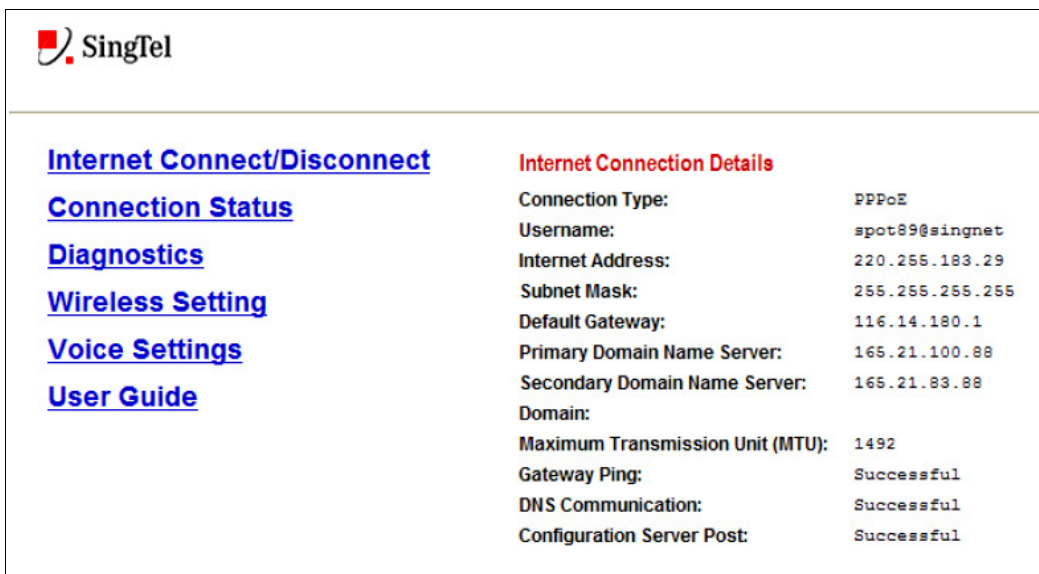


How to Set Up Port Forwarding for Panasonic IP Cameras on a 2-Wire Router

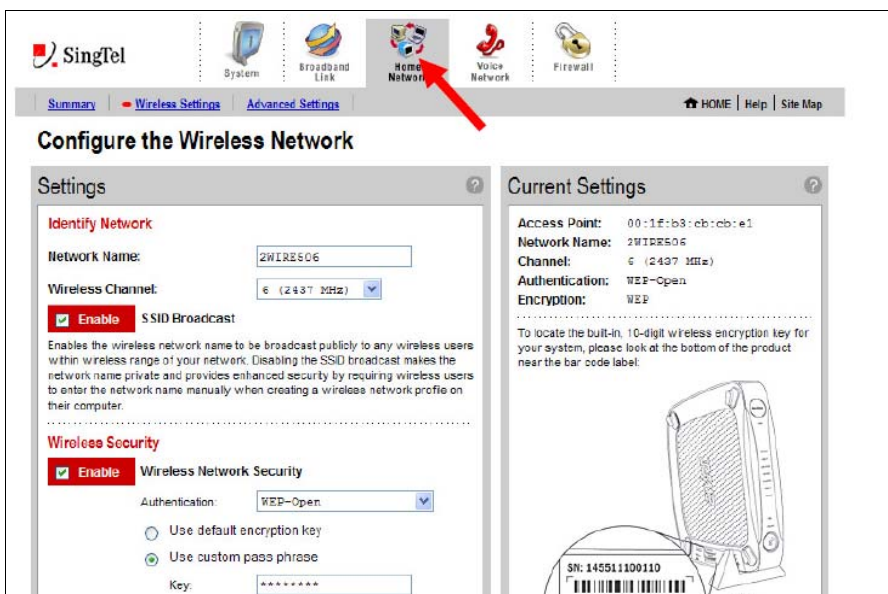
- 4.1 Login to the router using your Internet Explorer browser (IE) by typing this address in the browser URL address bar: <http://192.168.1.254>



2. Click on the 'Wireless Setting'.

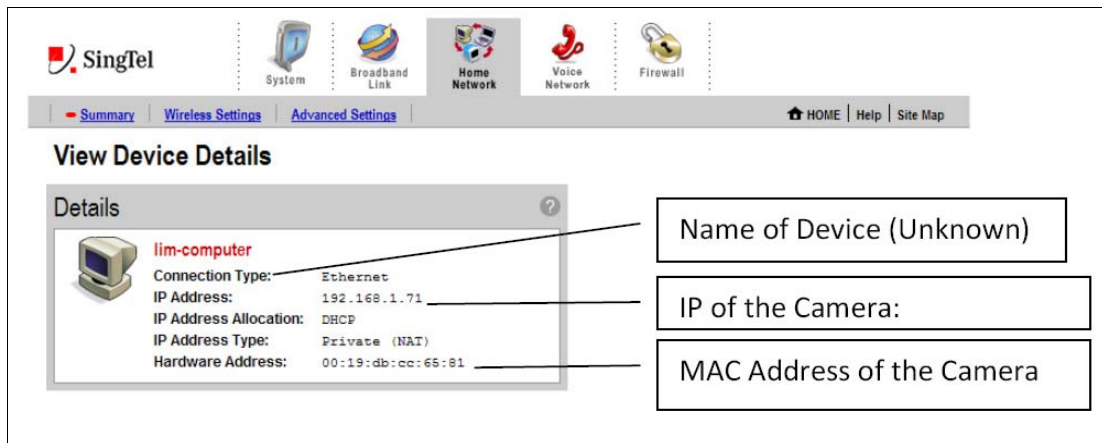
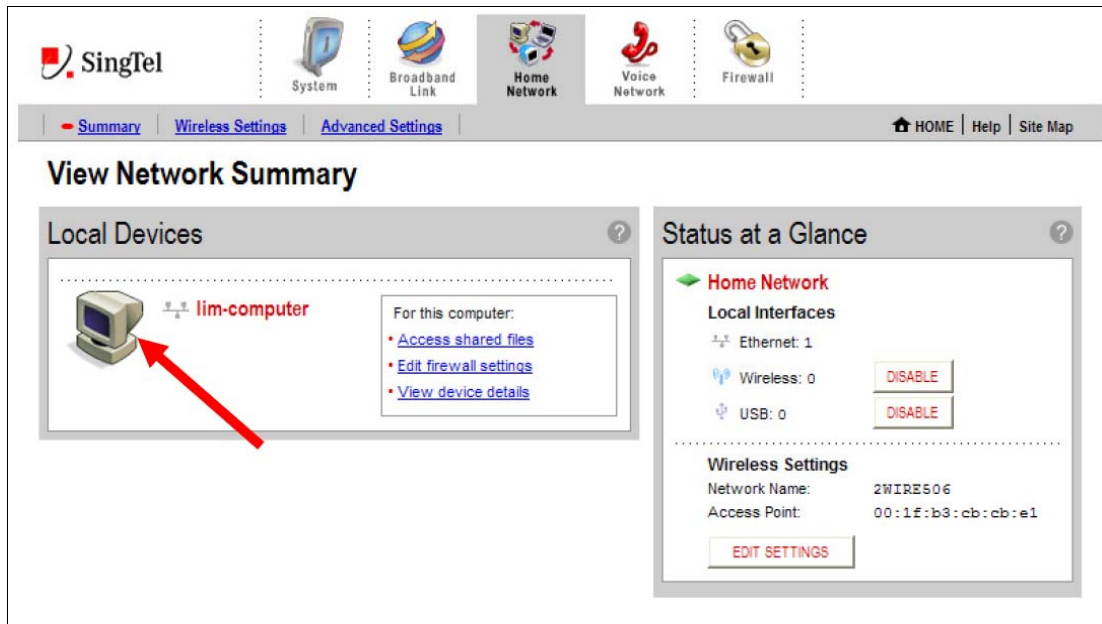


3. Click on the 'Home Network' Link



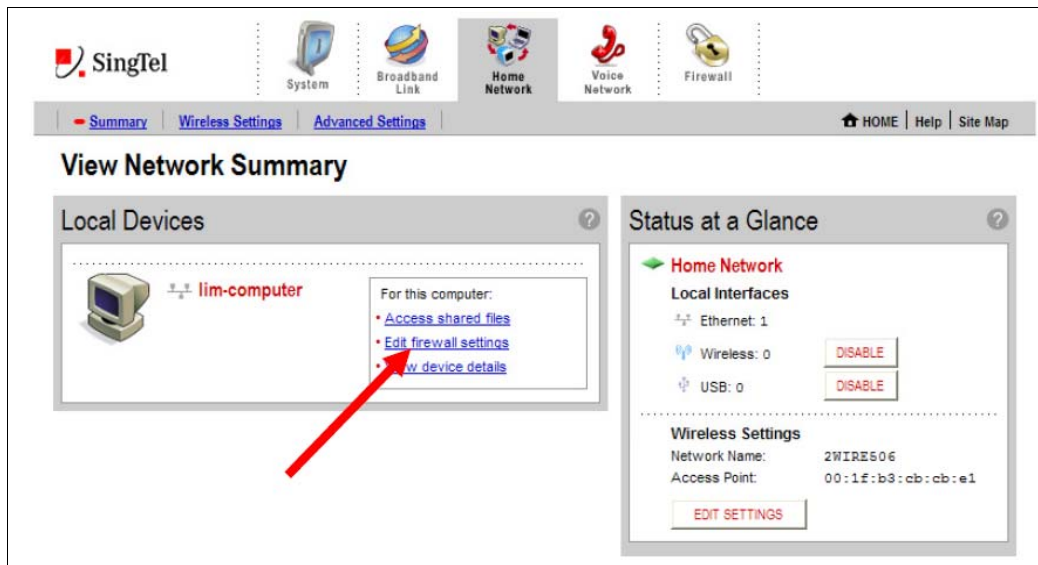
How to Set Up Port Forwarding for Panasonic IP Cameras on a 2-Wire Router

4. You will see a list of local devices. You can click on the device detail to see if that device is the Panasonic camera. Click on the 'Summary' for the Panasonic camera.

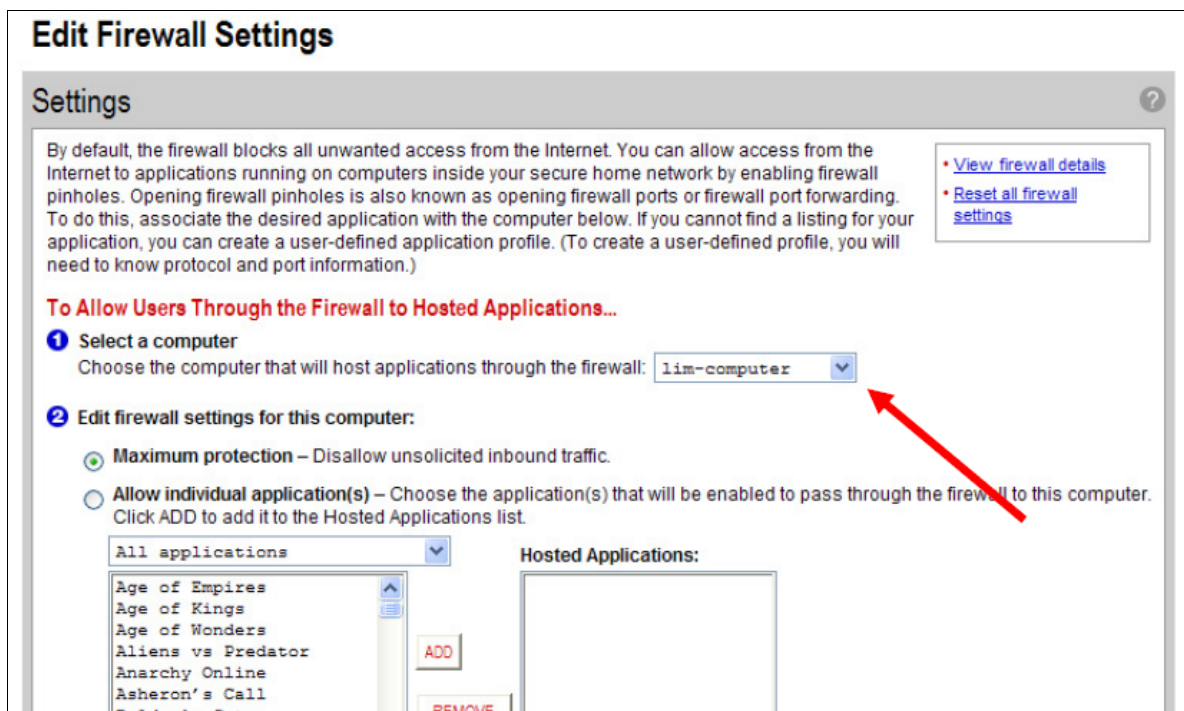


How to Set Up Port Forwarding for Panasonic IP Cameras on a 2-Wire Router

5. Click on Edit Firewall Setting

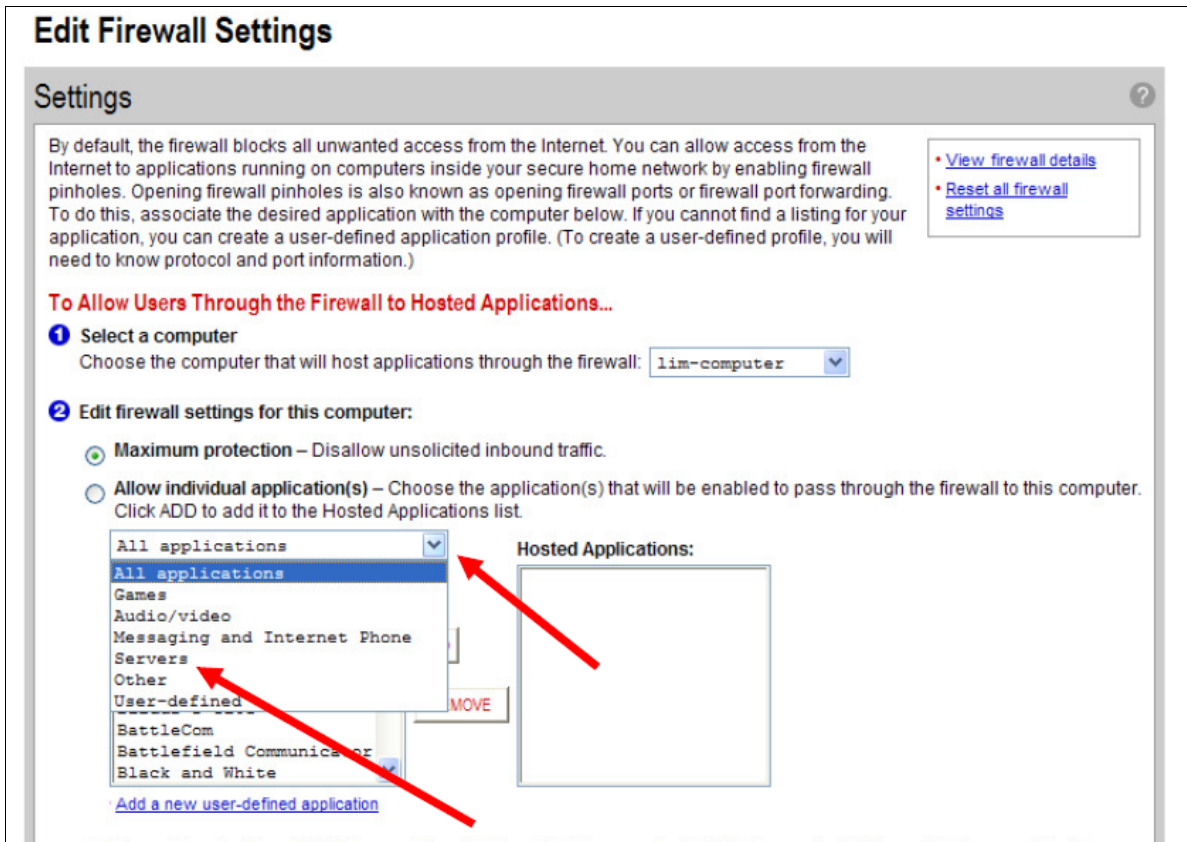


6. Select the IP Camera from the drop-down list. Please ensure to select the right device.

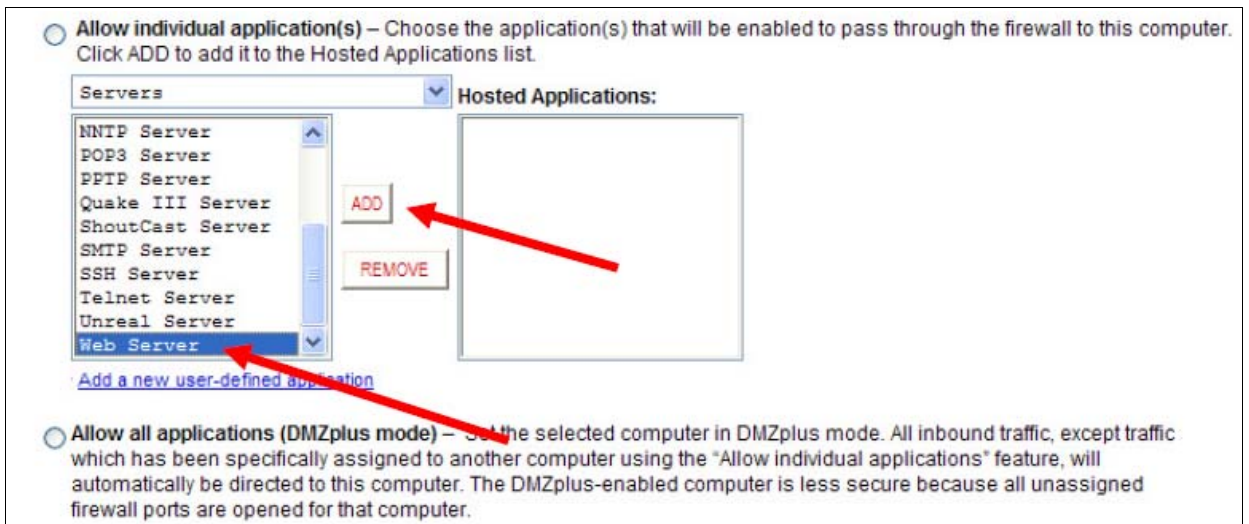


How to Set Up Port Forwarding for Panasonic IP Cameras on a 2-Wire Router

7. Under 'Allow individual application(s)': Select :Servers



8. Select: Web Server and click on the 'ADD' button



9. Click: Done

----- This completes the port forwarding for 2Wire Router Setup -----