

Panasonic

Getting Started Network Camera

Indoor Use Only

Model No. **BL-C20**

Please read the Important Information manual before using. This Getting Started explains how to connect, set up and mount the camera. See the Operating Instructions on the Setup CD-ROM for details about the camera's features.

- The Setup CD-ROM provides Getting Started in the following languages: English, French, German, Italian, Spanish, Russian, Chinese and Korean.
- If you cannot complete the setup, see the Troubleshooting manual on the Setup CD-ROM.

This product is a wireless Network Camera. Using a PC and wireless router, it allows you to view images in a residence or from distant places over the Internet.

Trademarks

- Adobe, Acrobat and Reader are either registered trademarks or trademarks of Adobe Systems Incorporated in the United States and/or other countries.
- Microsoft, Windows and ActiveX are either registered trademarks or trademarks of Microsoft Corporation in the United States and/or other countries.
- Screen shots reprinted with permission from Microsoft Corporation.
- All other trademarks identified herein are the property of their respective owners.
- This software is based in part on the work of the Independent JPEG Group.

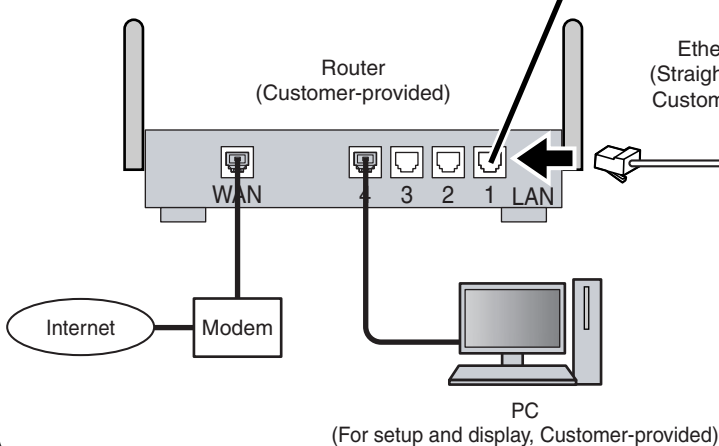
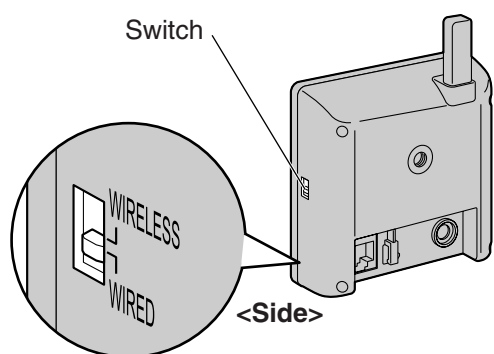
Abbreviations

- UPnP is the abbreviation for "Universal Plug and Play".
- "Network Camera" is called "camera" in this manual.
- "Setup CD-ROM" is called "CD-ROM" in this manual.

1. Connect the camera to your router.

The PC should be connected to the router and then to the Internet in advance.

- 1 Confirm that the switch on the side of the camera is set to WIRED.

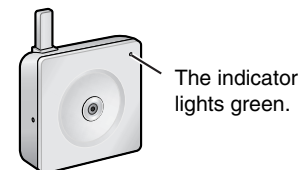


- 2 Connect the Ethernet cable (customer-provided) to the camera and the router.

- 3 Connect the AC adaptor cord to the DC In jack.

- 4 Plug the AC adaptor into the power outlet.

- Confirm that the indicator lights green after about 1 minute.



The indicator lights green.

- When you operate the camera, the power outlet should be near the camera and easily accessible.
- Use only specified Panasonic AC adaptor (Order No. PQLV206CEY [for use in countries/areas other than the United Kingdom], PQLV206EY [for use in the United Kingdom]).
- If the indicator does not light green, see page 3 and 4 of Troubleshooting on the CD-ROM.
- The camera may become warm. This is not a malfunction.

➔ To the power outlet

AC adaptor

2. Set up the camera.

Important

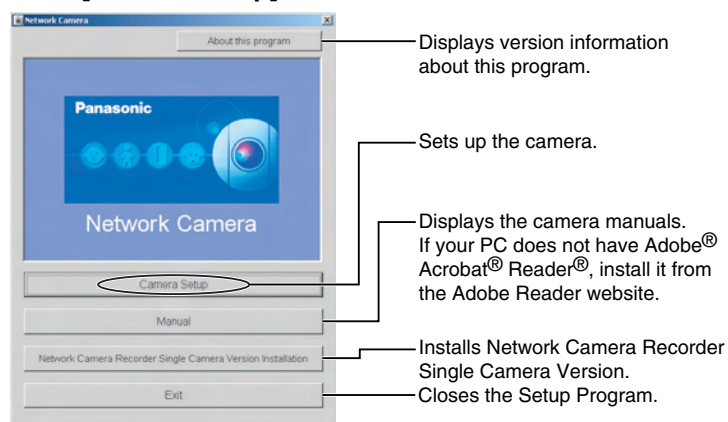
- To avoid any possible problems, temporarily disable any firewall or antivirus software.
- This procedure explains installation of the camera on the same network as your PC.
- Before proceeding, close your web browser.

Note

- When the setup program is run on a PC with a Chinese, French or Japanese operating system, program screens will be displayed in that language. In addition, the language settings of the software will also be set to the same as the OS.
- The images used in the following procedures are of the English-language version.

- 1 Insert the CD-ROM into the CD-ROM drive of the PC.
 - If the Network Camera Setup window is not displayed automatically, double-click the "Setup.exe" file on the CD-ROM.

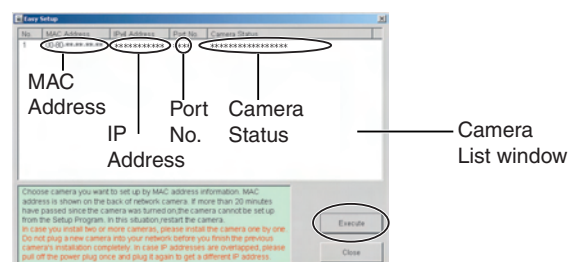
- 2 Click [Camera Setup].



- If a Windows Security Alert is displayed, click [Unblock].

- 3 Select the camera to set up and click [Execute].

- This program searches for the cameras that are connected to the router and displays their MAC Addresses, IP addresses and Port Numbers.



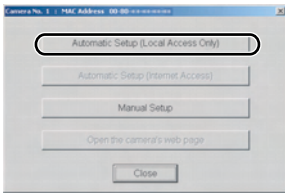
- The MAC Address on the rear side (see page 20 of the Operating Instructions on the CD-ROM) of the camera shows which camera you select on the Camera List window.

Note

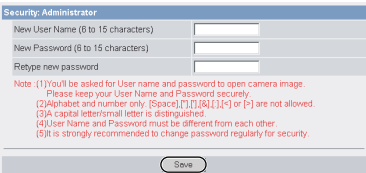
- If the indicator does not light green, check the connection (see page 19 of the Operating Instructions, or page 3 and 4 of Troubleshooting on the CD-ROM).
- If more than 20 minutes have passed since the camera was turned on, the camera cannot be set up from the Setup Program. In this situation, disconnect the AC adaptor from the power outlet, and reconnect it again.
- The Setup Program may not list any cameras due to your firewall or antivirus software settings on your PC. If you cannot disable your firewall or antivirus software, you can set up the camera by entering the camera MAC address. The camera's MAC address can be found on the label affixed to the rear of each camera. See page 20 of the Operating Instructions on the CD-ROM for details.



4 Click [Automatic Setup (Local Access Only)].



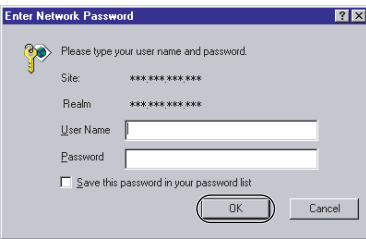
5 Enter the user name and password, and click [Save].



Note

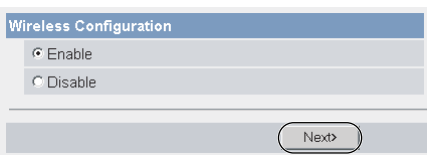
Make a note of the user name and password.

6 The Enter Network Password window is displayed. Enter the user name and password that were set, and click [OK].



7 To set Wireless Configuration, check [Enable] and click [Next>].

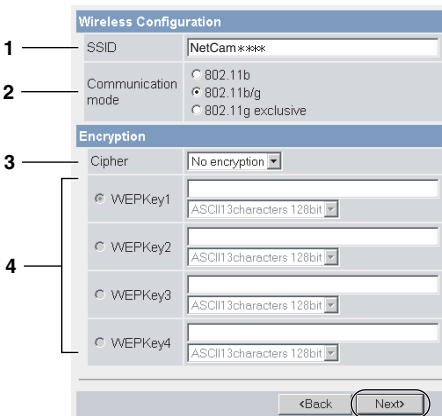
- When [Disable] is selected, skip to step 9.



• Wireless Configuration can also be set at **Wireless** on the Setup Page (see page 50 of the Operating Instructions on the CD-ROM).

8 Set the Wireless Configuration according to the wireless settings of the router, and click [Next>].

- For more information about wireless setting, see <http://panasonic.co.jp/pcc/products/en/netwkcsm/>



1. Set the SSID.

Set the name of the wireless network.

2. Select the Communication mode.

These are IEEE Communication modes. Select the same Communication mode as that of the router to which the camera is connected.

802.11b (IEEE802.11b) : Only the 802.11b wireless router can be connected.

802.11b/g (IEEE802.11g) : Either the 802.11b or 802.11g router can be connected.

802.11g exclusive (IEEE802.11g) : Only the 802.11g router can be connected.

3. Select encrypting or not encrypting.

Selecting WEP can encrypt data within the wireless LAN.

WEP: Encrypting (setting WEP) makes it difficult for unauthorized users to read data within the wireless LAN, even if they can receive it. To encrypt data, set the same encryption key to every terminal within the wireless LAN. There are 3 kinds of encryption key: 64 bit, 128 bit and 152 bit. Security level of encryption increases in order of length as follows: 64 bit, 128 bit and 152 bit.

No encryption: Select when not using encryption.

4. Set the WEPKey1-4.

Selecting [WEP] at Cipher enables you to set WEPKey1-4. One or all of the four keys can be set. Check the key number set to the router, and set the same key as at the router.

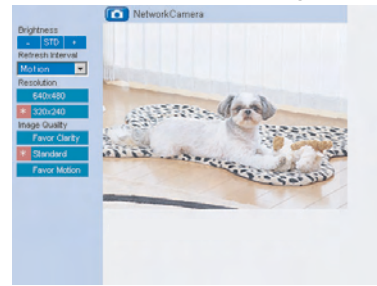
***** : The entered WEPKey will be displayed as "*"s regardless of the key type selected.

<Example>

- HEX, 10 characters 64 bit : 012345abcd
- HEX, 26 characters 128 bit : 0123456789abcdef012345abcd
- HEX, 32 characters 152 bit : 0123456789abcdef0123456789abcdef
- ASCII 5 characters 64 bit : 012yz
- ASCII 13 characters 128 bit : 0123456uvwxz
- ASCII 16 characters 152 bit : 0123456789uvwxz

9 When the Single Camera page is displayed, setup is complete.

- If the Security Warning window is displayed when installing ActiveX® Controls, click [Yes].
- To install ActiveX Controls on Microsoft® Windows® XP Service Pack 2, see "Security Warning window on Microsoft Windows XP Service Pack 2" on the next page.

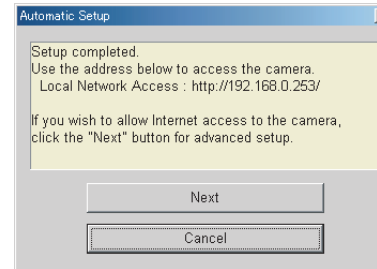


Note

To ensure that the most current image is displayed, Internet Explorer should be configured as follows. This will not have a negative effect on normal use.

1. While viewing any website, click [Tools] → [Internet Options].
2. In the section "Temporary Internet Files", click [Settings] and check [Every visit to the page].

10 Click [Next] to set up the Internet access to the camera and go to step 2 in "Set up Internet access to the camera".

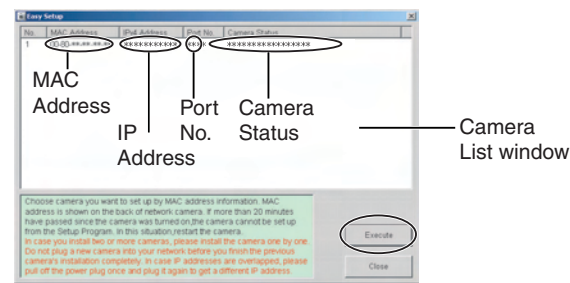


- Click [Cancel] and go to the last page if you will mount the camera.
- If you set wireless configuration, confirm the wireless LAN setup seeing the next page.

3. Set up Internet access to the camera.

1 Select the camera on the camera list to set up the Internet access, and click [Execute].

- This program searches for the cameras that are connected to the router and displays their MAC Addresses, IP addresses and Port Numbers.

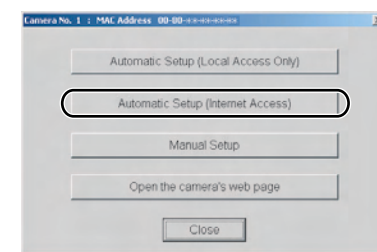


- The MAC Address on the rear side (see page 20 of the Operating Instructions on the CD-ROM) of the camera shows which camera you select on the camera list window.

Note

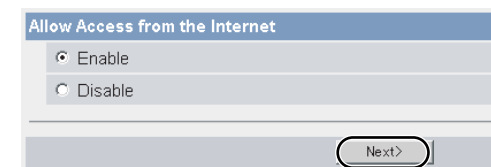
If more than 20 minutes have passed since the camera was turned on, the camera cannot be set up from the Setup Program. In this situation, restart the camera.

2 Click [Automatic Setup (Internet Access)].



3 The Enter Network Password window is displayed. Enter the user name and password that were set, and click [OK].

4 When using a router that supports UPnP™, check [Enable]. When using a router that does not support UPnP™, check [Disable]. Then click [Next>].

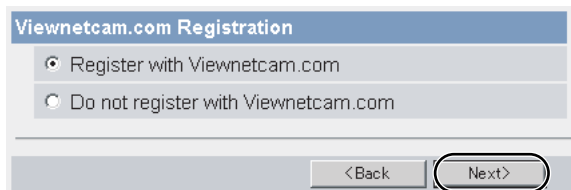


- Check if your router supports UPnP™ referring to the router's manual.
- If you select [Disable], skip to step 8 on the next page.

Registration with the "Viewnetcam.com FREE DynamicDNS service"

By registering with the Viewnetcam.com FREE DynamicDNS service, you can create a personalized web address at which your camera's live video can always be found on the Internet. For detailed information, access "<http://www.viewnetcam.com>".

- ⑤ To register with the "Viewnetcam.com FREE DynamicDNS service", check [Register with Viewnetcam.com] and click [Next>].



- If you selected [Do not register with Viewnetcam.com], skip to step ⑧.

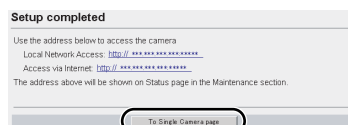
- ⑥ The Enter Network Password window is displayed. Enter the user name and password that were set, and click [OK].

- ⑦ The "Viewnetcam.com FREE DynamicDNS service" website is displayed. Follow the displayed instructions for registration.

- If the message "Failed to configure the router's Port Forwarding by UPnP" is displayed, your router may not support UPnP™ or UPnP™ is not enabled. Enable your router's UPnP™ or set Port Forwarding manually following the router's manual, and try Automatic Setup again. For more information about setting up a router, refer to the Panasonic Network Camera support website at <http://panasonic.co.jp/pcc/products/en/netwcam/>
- If the message "Failed to register with Viewnetcam.com." is displayed, confirm that the router is connected to the Internet.

- ⑧ When "Setup completed" is displayed, click [To Single Camera page].

- When [Enable] was selected at step ④.



- When [Disable] was selected at step ④.



Note

- The port number must be specified at the end of the camera URL.

For example

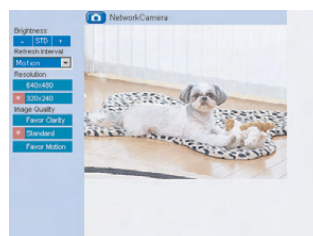
Using port 80: [http://\(Cameraname\).viewnetcam.com](http://(Cameraname).viewnetcam.com)
or <http://IP Address>

Using any other port: [http://\(Cameraname\).viewnetcam.com:Port Number](http://(Cameraname).viewnetcam.com:Port Number)
or <http://IP Address:Port Number>

- The URL for the local network access may be different from the one set up on the previous page.

- ⑨ When the Single Camera page is displayed, setup is complete.

- If a Security Warning window is displayed when installing ActiveX Controls, click [Yes].
- To install ActiveX Controls on Microsoft Windows XP Service Pack 2, see "Security Warning window on Microsoft Windows XP Service Pack 2" below.



Note

To ensure that the most current image is displayed, Internet Explorer should be configured as follows. This will not have a negative effect on normal use.

1. While viewing any website, click [Tools] → [Internet Options].
2. In the section "Temporary Internet Files", click [Settings] and check [Every visit to the page].

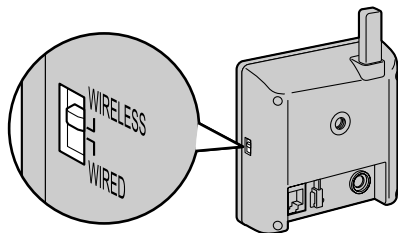
- If you set wireless configuration, confirm the wireless LAN setup below.

Confirming the Wireless LAN Setup

After setting each item for the wireless LAN, confirm that the camera works correctly.

- ① Unplug the Ethernet cable and turn off the power (disconnect the AC adaptor).

- ② Set the switch on the side of the camera to WIRELESS.



- ③ Turn on the power by connecting the AC adaptor to the power outlet.

- ④ Start up the web browser on the PC.

- ⑤ Enter "http://IP address (or URL):Port No." in the address field and press [Enter].

- When port number is 80 (default), you do not need to enter port number.
- When the following Top Page is displayed, the wireless LAN setup is successful.



- If the Top Page was not displayed, the settings for the camera are not identical with those for the router. Check the settings by using wired connection. If the settings are correct and you use a proxy server, set the web browser not to access the proxy server. If the Top Page is not displayed even after trying these methods, contact the retailer.
- It takes about 1 minute for the new settings to be effective.
- It is not possible to access the camera simultaneously by both wired and wireless connection.
- Some routers need to be restarted after setting the camera's switch to WIRELESS.

Security Warning window on Microsoft Windows XP Service Pack 2

To view a video (Motion JPEG), ActiveX Controls must be installed. Follow the steps shown below to install ActiveX Controls.

- ① Click the warning displayed above the tabs, and click [Install ActiveX Control...].



- ② Click [Install].

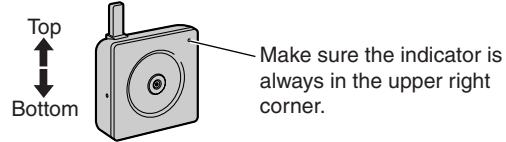
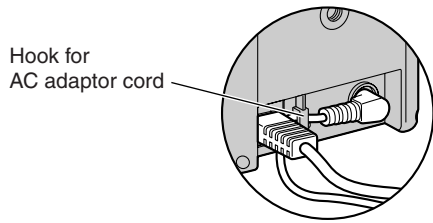


4. Mount the camera.

The camera can be mounted in the following ways.

Note

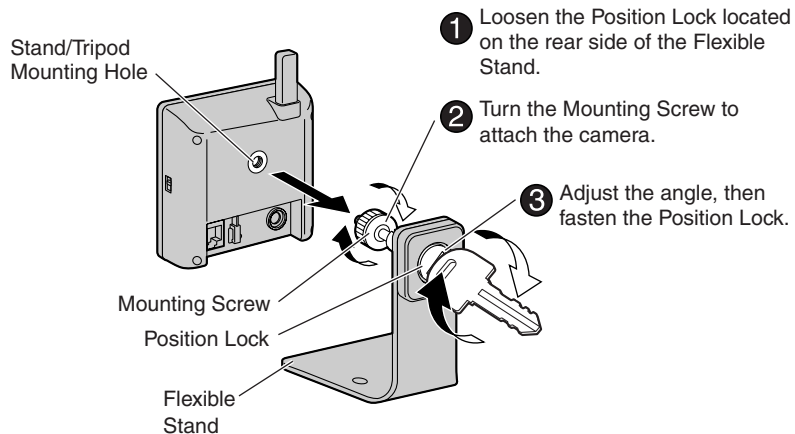
- Do not mount the camera where the sun light directly hits the camera or in outdoor-type housing without a temperature control system. The camera may malfunction due to high temperature.
- When you mount the camera, always hook the AC adaptor cord to the hook.
- This product is for indoor use only. Do not use it outdoors.
- The camera may become warm. This is not a malfunction.
- Mount the camera where the AC adaptor can reach the power outlet, or use an extension cord (customer-provided).
- Do not mount the camera upside down, since the image will be displayed upside down.



Stand Mount

Note

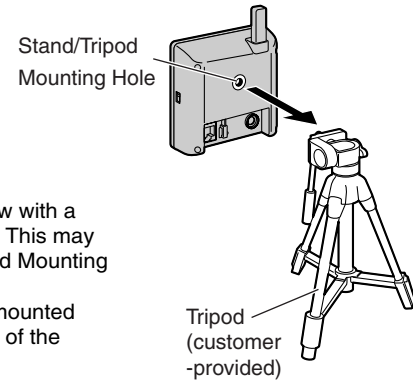
Disconnect all cables from the camera. Reconnect the cables after mounting the camera.



Tripod Mount

Note

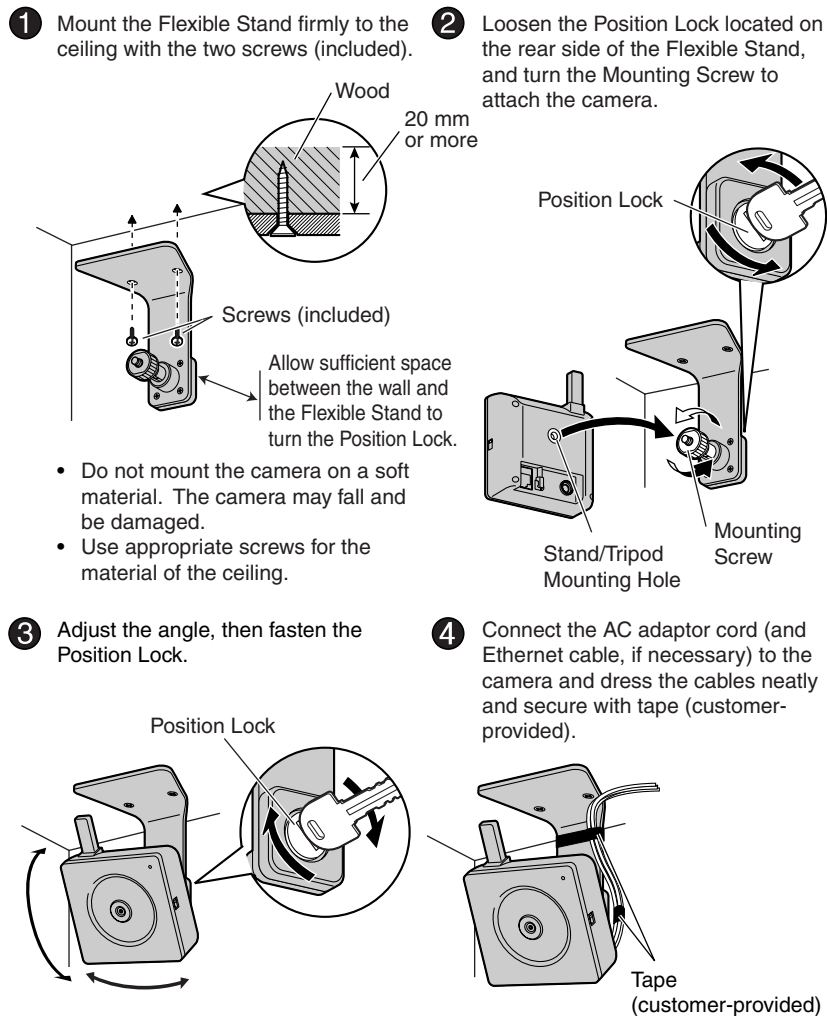
- Do not use a tripod screw with a thread of 6 mm or more. This may damage the Stand/Tripod Mounting Hole.
- The camera cannot be mounted depending on the shape of the camera platform.



Ceiling Mount

Note

- Do not mount the camera upside down, since the image will be displayed upside down.
- We recommend only mounting the camera using the provided hardware. Mounting in any other manner may cause the camera to fall, resulting in personal injury or damage to the camera.
- To reduce the load on the mounting hardware, dress the cables neatly and secure with tape.
- Disconnect all cables from the camera. Reconnect the cables after mounting the camera.
- The included screws are only for a wooden ceiling.
- Mount the camera on a stable location such as a wooden column. Otherwise, the camera may fall down and break.



Wall Mount

Note

- Do not mount the camera upside down, since the image will be displayed upside down.
- We recommend only mounting the camera using the provided hardware. Mounting in any other manner may cause the camera to fall, resulting in personal injury or damage to the camera.
- To reduce the load on the mounting hardware, dress the cables neatly and secure with tape.
- Disconnect all cables from the camera. Reconnect the cables after mounting the camera.
- The included screws are only for a wooden wall.
- Mount the camera on a stable location such as a wooden column. Otherwise, the camera may fall down and break.

