

# Panasonic

## Getting Started Network Camera

Indoor Use Only

Model No. **BL-C1**

Please read the Important Information manual before using. This Getting Started explains how to connect, set up and mount the camera. See the Operating Instructions on the Setup CD-ROM for details about the camera's features.

- The Setup CD-ROM provides Getting Started in the following languages: English, French, German, Italian, Spanish, Russian, Chinese and Korean.
- If you cannot complete the setup, see the Troubleshooting manual on the Setup CD-ROM.

### Trademarks

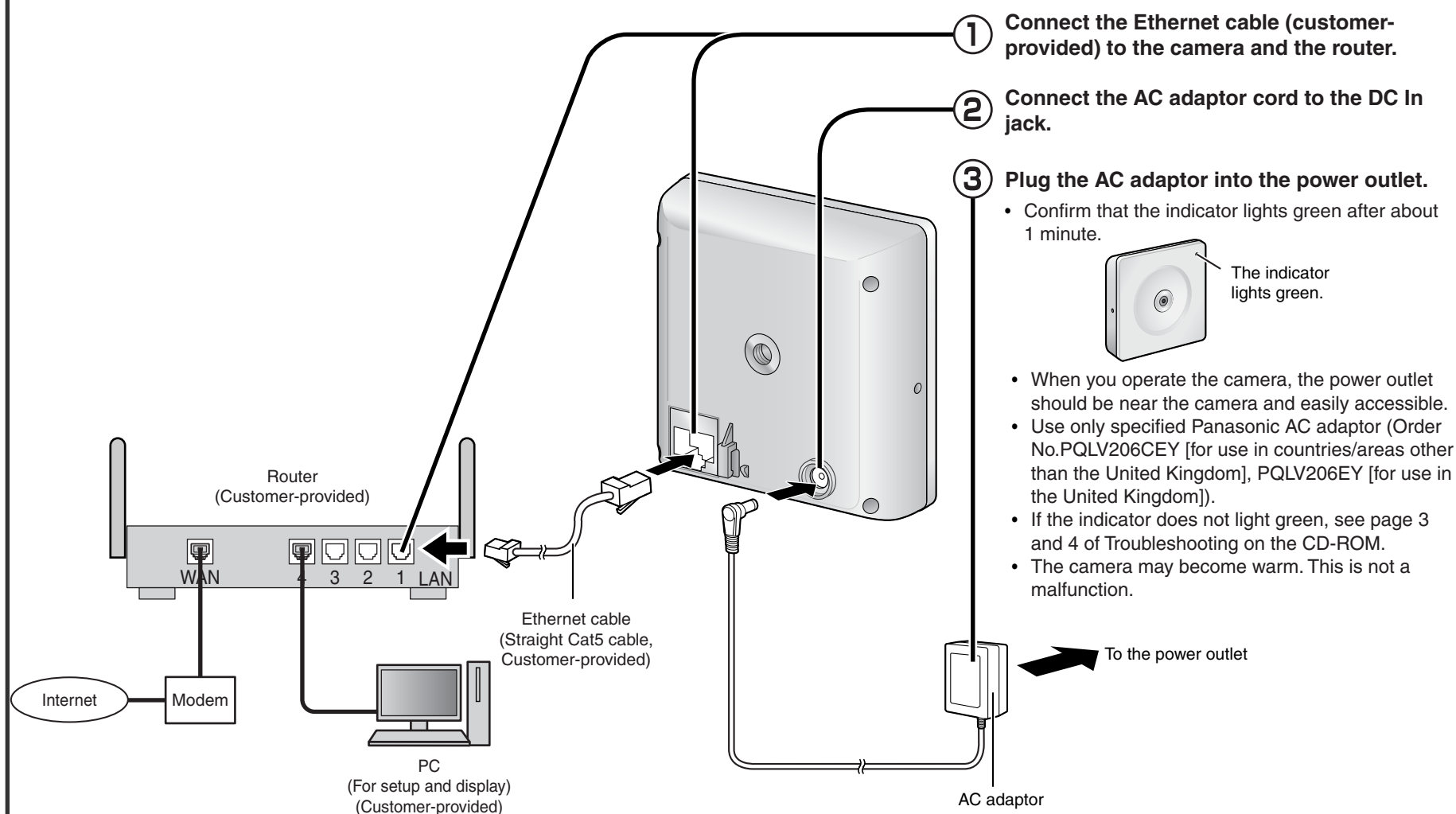
- Adobe, Acrobat and Reader are either registered trademarks or trademarks of Adobe Systems Incorporated in the United States and/or other countries.
- Microsoft, Windows and ActiveX are either registered trademarks or trademarks of Microsoft Corporation in the United States and/or other countries.
- Screen shots reprinted with permission from Microsoft Corporation.
- All other trademarks identified herein are the property of their respective owners.
- This software is based in part on the work of the Independent JPEG Group.

### Abbreviations

- UPnP is the abbreviation for "Universal Plug and Play".
- "Network Camera" is called "Camera" in this manual.
- "Setup CD-ROM" is called "CD-ROM" in this manual.

## 1. Connect the camera to your router.

The PC should be connected to the router and then to the Internet in advance.



## 2. Set up the camera.

### Important

- To avoid any possible problems, temporarily disable any firewall or antivirus software.
- This procedure explains installation of the camera on the same network as your PC.
- Before proceeding, close your web browser.

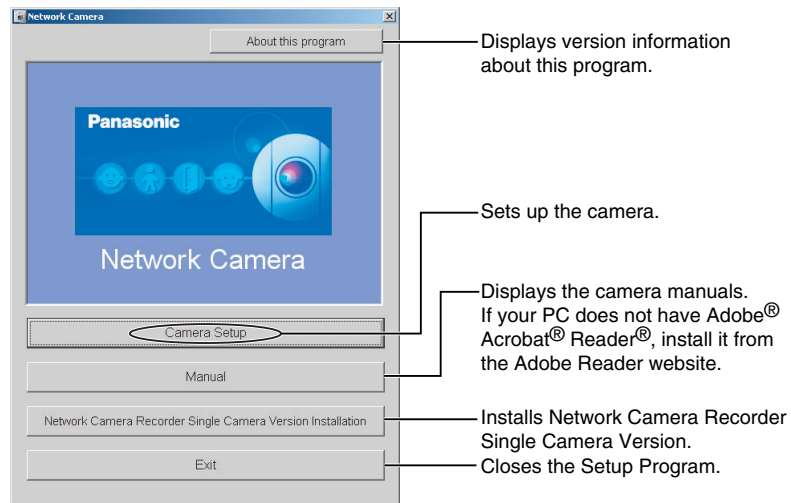
### Note

- When the setup program is run on a PC with a Chinese, French or Japanese operating system, program screens will be displayed in that language. In addition, the language settings of the software will also be set to the same as the OS.
- The images used in the following procedures are of the English-language version.

#### ① Insert the CD-ROM into the CD-ROM drive of the PC.

- If the Network Camera Setup window is not displayed automatically, double-click the "Setup.exe" file on the CD-ROM.

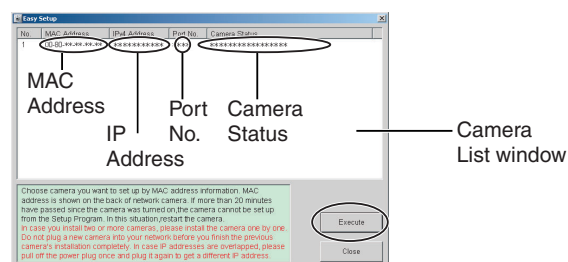
#### ② Click [Camera Setup].



- If a Windows Security Alert is displayed, click [Unblock].

#### ③ Select the camera to set up and click [Execute].

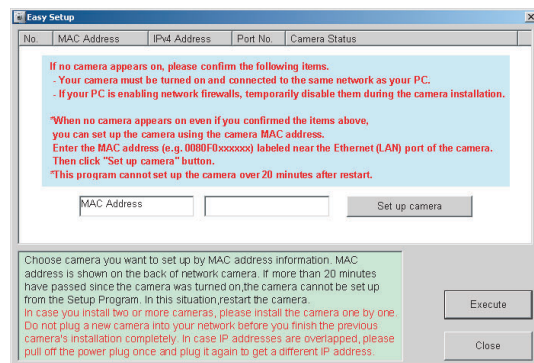
- This program searches for the cameras that are connected to the router and displays their MAC Addresses, IP addresses and Port Numbers.



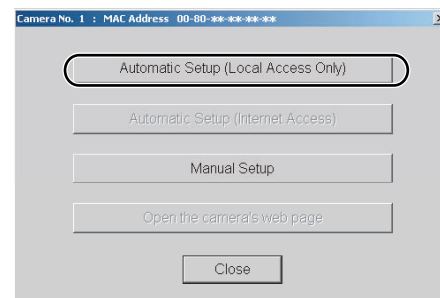
- The MAC Address on the rear side (see page 11 of the Operating Instructions on the CD-ROM) of the camera shows which camera you select on the Camera List window.

### Note

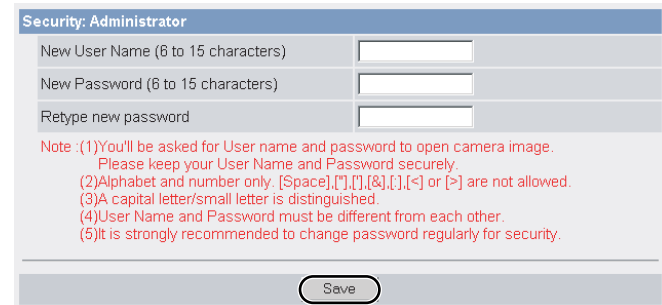
- If the indicator does not light green, check the connection (see page 10 of the Operating Instructions, and page 3 and 4 of Troubleshooting on the CD-ROM).
- If more than 20 minutes have passed since the camera was turned on, the camera cannot be set up from the Setup Program. In this situation, disconnect the AC adaptor from the power outlet, and reconnect it again.
- The Setup Program may not list any cameras due to your firewall or antivirus software settings on your PC. If you cannot disable your firewall or antivirus software, you can set up the camera by entering the camera MAC address on the following window. The camera's MAC address can be found on the label affixed to the rear of each camera. See page 11 of the Operating Instructions on the CD-ROM for details.



#### ④ Click [Automatic Setup (Local Access Only)].



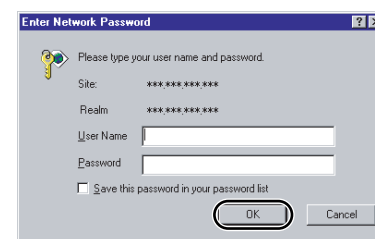
#### ⑤ Enter the user name and password, and click [Save].



### Note

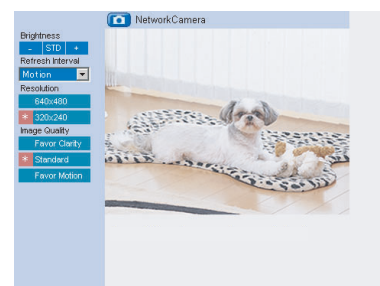
Make a note of the user name and password.

#### ⑥ The Enter Network Password window is displayed. Enter the user name and password that were set, and click [OK].



#### ⑦ When the Single Camera page is displayed, setup is complete.

- If the Security Warning window is displayed when installing ActiveX® Controls, click [Yes].
- To install ActiveX Controls on Microsoft® Windows® XP Service Pack 2, see "Security Warning window on Microsoft Windows XP Service Pack 2" on the last page.

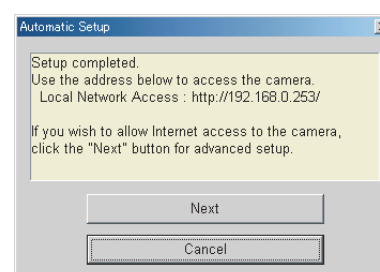


### Note

To ensure that the most current image is displayed, Internet Explorer should be configured as follows. This will not have a negative effect on normal use.

1. While viewing any website, click [Tools] → [Internet Options].
2. In the section "Temporary Internet Files", click [Settings] and check [Every visit to the page].

#### ⑧ Click [Next] to set up the Internet access to the camera and go to step ② in "Set up Internet access to the camera" on the next page.

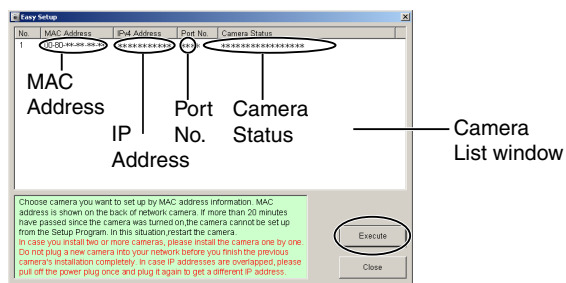


- Click [Cancel] and go to the last page if you will mount the camera.

### 3. Set up Internet access to the camera.

#### ① Select the camera on the camera list to set up the Internet access, and click [Execute].

- This program searches for the cameras that are connected to the router and displays their MAC Addresses, IP addresses and Port Numbers.

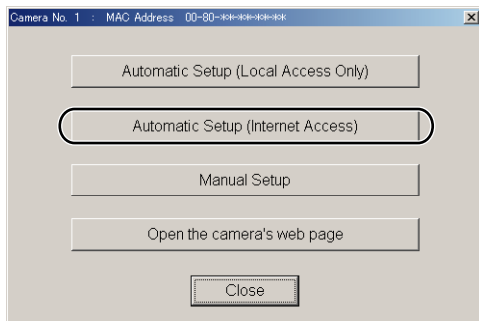


- The MAC Address on the rear side (see page 11 of the Operating Instructions on the CD-ROM) of the camera shows which camera you select on the camera list window.

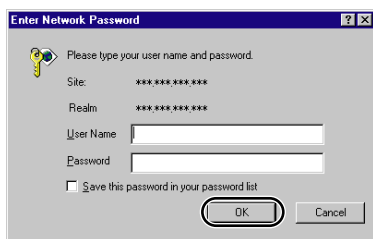
#### Note

If more than 20 minutes have passed since the camera was turned on, the camera cannot be set up from the Setup Program. In this situation, restart the camera.

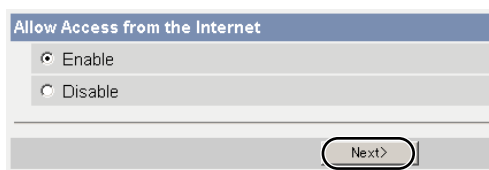
#### ② Click [Automatic Setup (Internet Access)].



#### ③ The Enter Network Password window is displayed. Enter the user name and password that were set, and click [OK].



#### ④ When using a router that supports UPnP™, check [Enable]. When using a router that does not support UPnP™, check [Disable]. Then click [Next>].

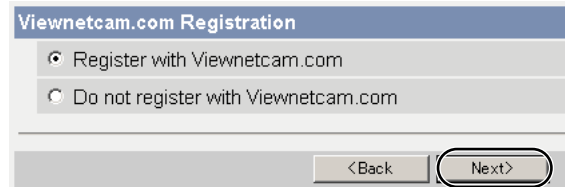


- Check if your router supports UPnP™ referring to the router's manual.
- If you select [Disable], skip to step ⑧.

### Registration with the "Viewnetcam.com FREE DynamicDNS service"

By registering with the Viewnetcam.com FREE DynamicDNS service, you can create a personalized web address at which your camera's live video can always be found on the Internet. For detailed information, access "<http://www.viewnetcam.com>".

#### ⑤ To register with the "Viewnetcam.com FREE DynamicDNS service", check [Register with Viewnetcam.com] and click [Next>].



- If you selected [Do not register with Viewnetcam.com], skip to step ⑧.

#### ⑥ The Enter Network Password window is displayed. Enter the user name and password that were set, and click [OK].

#### ⑦ The "Viewnetcam.com FREE DynamicDNS service" website is displayed. Follow the displayed instructions for registration.

- If the message "Failed to configure the router's Port Forwarding by UPnP" is displayed, your router may not support UPnP™ or UPnP™ is not enabled. Enable your router's UPnP™ or set Port Forwarding manually following the router's manual, and try Automatic Setup again. For more information about setting up a router, refer to the Panasonic Network Camera support website at <http://panasonic.co.jp/pcc/products/en/netwcam/>
- If the message "Failed to register with Viewnetcam.com." is displayed, confirm that the router is connected to the Internet.

#### ⑧ When "Setup completed" is displayed, click [To Single Camera page].

- When [Enable] was selected at step ④.
- When [Disable] was selected at step ④.



#### Note

- The port number must be specified at the end of the camera URL.

#### For example

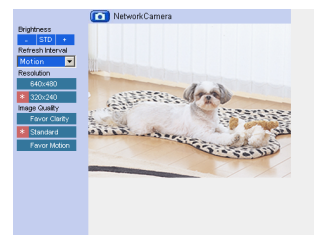
Using port 80: [http://\(Cameraname\).viewnetcam.com](http://(Cameraname).viewnetcam.com)  
or <http://IP Address>

Using any other port: [http://\(Cameraname\).viewnetcam.com:Port Number](http://(Cameraname).viewnetcam.com:Port Number)  
or <http://IP Address:Port Number>

- The URL for the local network access may be different from the one set up on the previous page.

#### ⑨ When the Single Camera page is displayed, setup is complete.

- If a Security Warning window is displayed when installing ActiveX Controls, click [Yes].
- To install ActiveX Controls on Microsoft Windows XP Service Pack 2, see "Security Warning window on Microsoft Windows XP Service Pack 2" on the next page.



#### Note

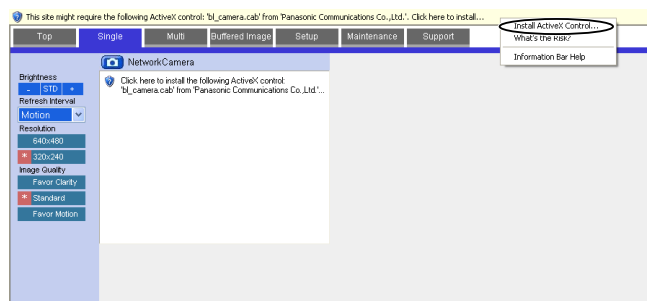
To ensure that the most current image is displayed, Internet Explorer should be configured as follows. This will not have a negative effect on normal use.

- While viewing any website, click [Tools] → [Internet Options].
- In the section "Temporary Internet Files", click [Settings] and check [Every visit to the page].

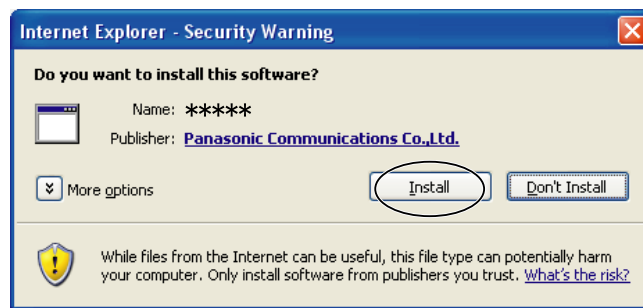
# Security Warning window on Microsoft Windows XP Service Pack 2

To view a video (Motion JPEG), ActiveX Controls must be installed. Follow the steps shown below to install ActiveX Controls.

1 Click the warning displayed above the tabs, and click [Install ActiveX Control...].



2 Click [Install].

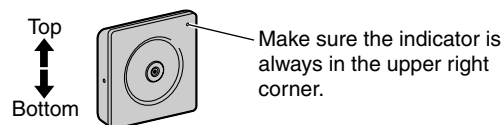
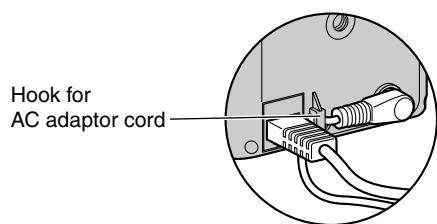


## 4. Mount the camera.

The camera can be mounted in the following ways.

### Note

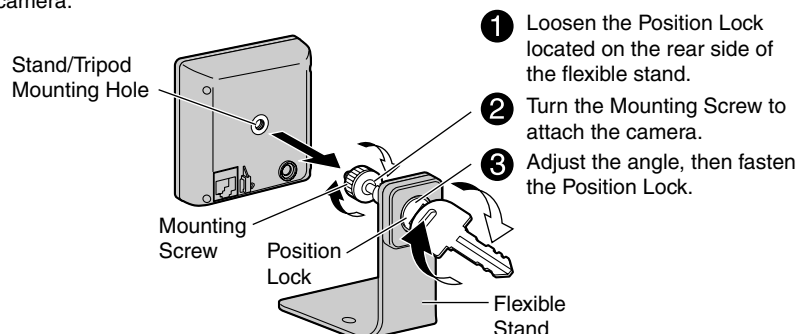
- Do not mount the camera where the sun light directly hits the camera or in outdoor-type housing without a temperature control system. The camera may malfunction due to high temperature.
- When you mount the camera, always hook the AC adaptor cord to the hook.
- This product is for indoor use only. Do not use it outdoors.
- The camera may become warm. This is not a malfunction.
- Mount the camera where the AC adaptor can reach a power outlet, or use an extension cord (customer-provided).
- Do not mount the camera upside down, since the image will be displayed upside down.



### Stand Mount

#### Note

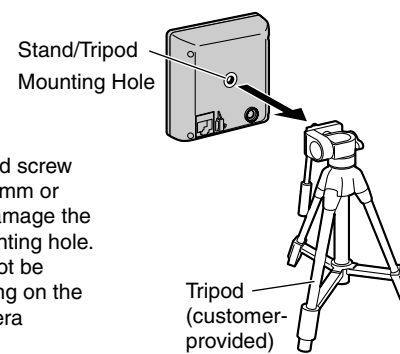
Disconnect all cables from the camera. Reconnect the cables after mounting the camera.



### Tripod Mount

#### Note

- Do not use a tripod screw with a thread of 6 mm or more. This may damage the Stand/Tripod mounting hole.
- The camera cannot be mounted depending on the shape of the camera platform.

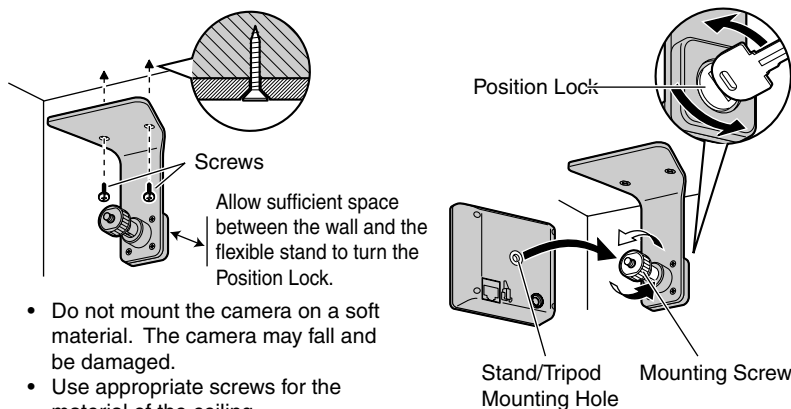


### Ceiling Mount

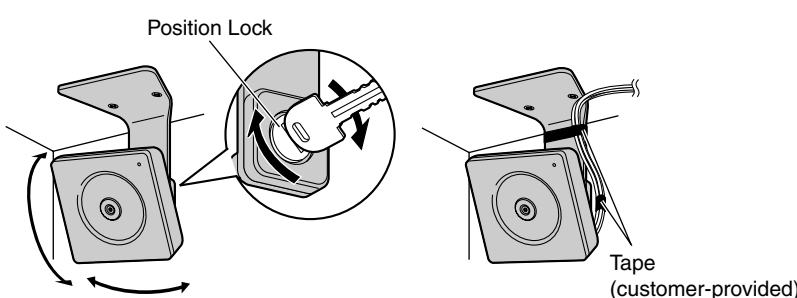
#### Note

- Do not mount the camera upside down, since the image will be displayed upside down.
- We recommend only mounting the camera using the provided hardware. Mounting in any other manner may cause the camera to fall, resulting in personal injury or damage to the camera.
- To reduce the load on the mounting hardware, dress the cables neatly and secure with tape.
- Disconnect all cables from the camera. Reconnect the cables after mounting the camera.

- Mount the flexible stand firmly to the ceiling with the two screws (included).
- Loosen the Position Lock located on the rear side of the flexible stand, and turn the Mounting Screw to attach the camera.



- Adjust the angle, then fasten the Position Lock.
- Connect the AC adaptor cord and the Ethernet cable to the camera. Dress the cables neatly and secure with tape (customer-provided).

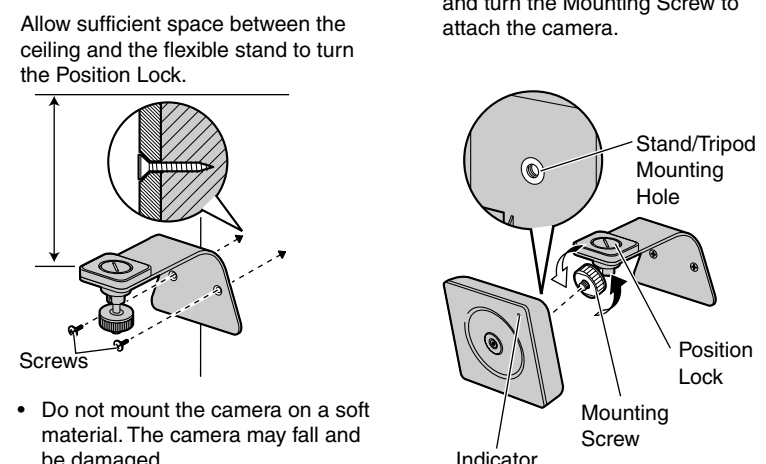


### Wall Mount

#### Note

- Do not mount the camera upside down, since the image will be displayed upside down.
- We recommend only mounting the camera using the provided hardware. Mounting in any other manner may cause the camera to fall, resulting in personal injury or damage to the camera.
- To reduce the load on the mounting hardware, dress the cables neatly and secure with tape.
- Disconnect all cables from the camera. Reconnect the cables after mounting the camera.

- Mount the flexible stand firmly to the wall with the two screws (included).
- Loosen the Position Lock located on the rear side of the flexible stand, and turn the Mounting Screw to attach the camera.



- Adjust the angle, then fasten the Position Lock.
- Connect the AC adaptor cord and the Ethernet cable to the camera. Dress the cables neatly and secure with tape (customer-provided).

