

TeleXper Digital Video Recorder (DVR)

Demo Guide

(v1.0) 10th May 2008

Overview

This document provides instructions for the TeleXper DVR demonstration.

You will be installing the software and then connect remotely to our company in Singapore to view the live recordings,

Table of Contents


Installing the Software	2
Logging in to the DVR Application	4

Installing the Software

The installation procedure will take not more than 15 minutes to complete (excluding time required to download the software installer).

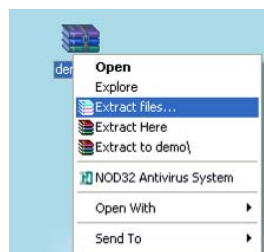
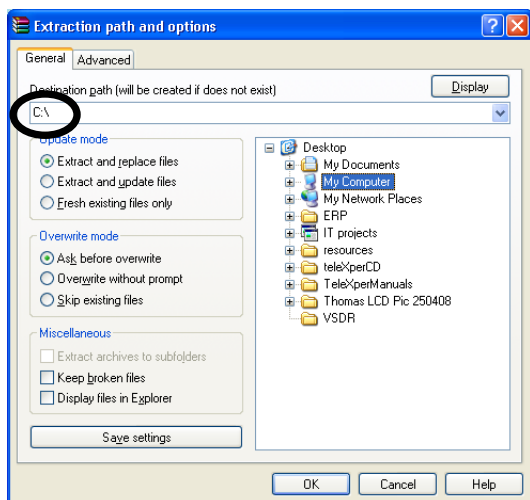
Step-by-step installation instructions

SOFTWARE DOWNLOADS

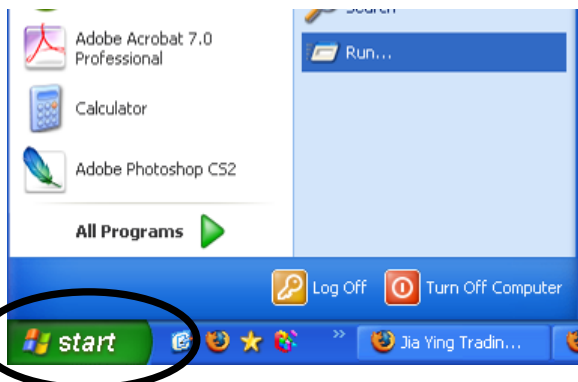
Filename	Description	Download
DVR demo software and guide - Windows XP		
demo_software.zip	Download the .zip file if you wish to try out our TeleXper DVR demo.	
demo_guide.pdf	Instructions for TeleXper DVR demo.	

Download and save the **demo_software.zip** file from the support section of our website if you haven't:

www.jiaying.com/support.html



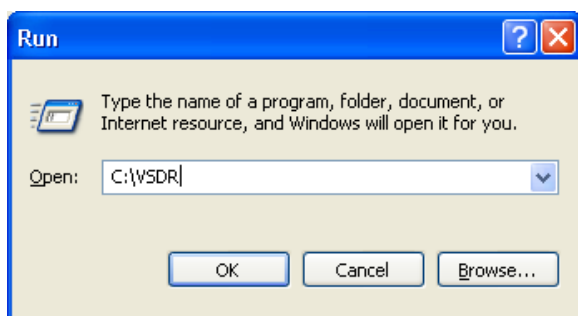
From where you've saved it to, extract / unzip the **demo_software.zip** file into C:\. A folder named VSDR will be created in C:\ after you've unzipped it.



Accessing C:\ folder

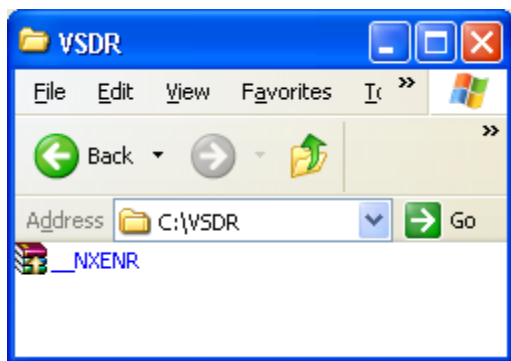
Click on the  button on the taskbar.

Select 'run'.



A small window will pop up.

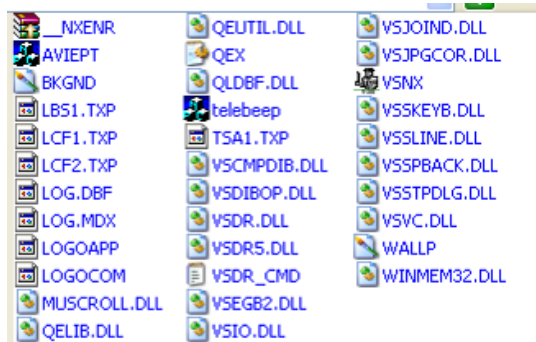
At the 'Run' window's open command, type **C:\VSDR**



Self-extracting the DVR software files

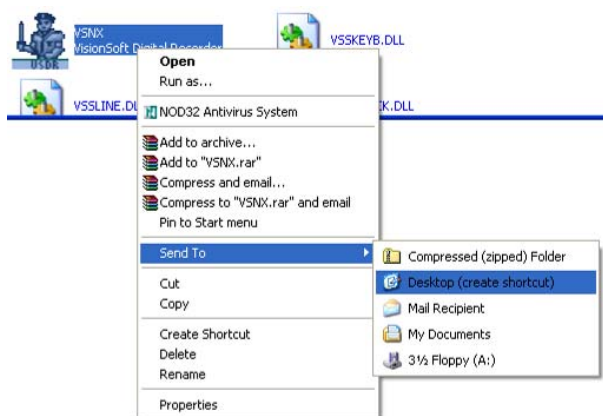
You should see the file **__NXENR.EXE** inside the **C:\VSDR** Folder.

Double-click the file. It will self-extract some files into the same folder.




You'll see the following files after the self-extraction has completed.

The software has been successfully installed.



Create the icon on your desktop

Right-click the VSNR.EXE icon . Select **Send To > Desktop (create shortcut)**. A copy of the icon will be created on your desktop.

This makes it easier for you to access the application right from the Windows desktop.


Logging in to the DVR Application

This section details the steps required to login to the TeleXper DVR (VS168) software on a Windows XP-based operating system. You can only log in after you have installed the software. If you have not installed the software, please refer to the earlier 'installation' section in this document.

Step-by-step login instructions:

Running the Application



Double-click the  icon on your desktop to start the application.

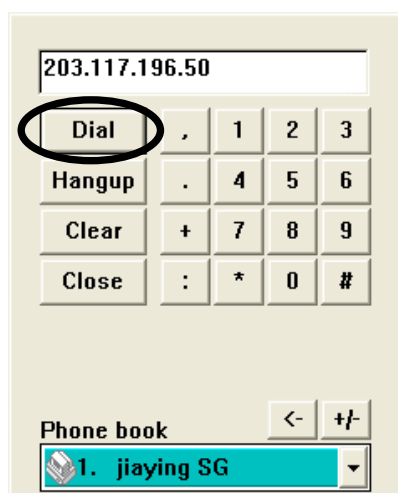
Note: If you are installing on Microsoft Vista, right click on the icon > select **Properties**. Click on the **Compatibility** tab. Tick 'Compatible with WinXP SP2'. At the bottom of the window, also tick 'Run as administrator'.



Main Screen

This is the main screen you'll see once the application has started up.

Click the **Connect** button. A window will pop up. If you are prompted for password anytime while using the software, type **99999999**.



Connecting to the IP Address

Enter 203.117.196.50 in the white box at the top. This is the IP address you will connect to.

Click **Dial**.

Once you're connected, you'll see a 'Connected' status at the green footer bar of the main screen. Once you've logged in, you can begin to explore the system - view the live videos, playback recorded footages, etc using the buttons on the left of the application.

End of Demo Guide

Feel free to contact us should you have any further enquiries.