

The Video Intercom Gives You Safety and Convenience

Checking Visitors without Having to Open the Door

For improved security, you can check your visitors by seeing them through the monitor without opening the door. This means you can feel safe and secure even when you're home all alone.



Checking Visitors from Anywhere with a Wireless Monitor

Even in homes where it takes time to reach the entrance, such as those with many rooms or annexes, you can talk to visitors right away, even before you reach the entrance, for extra convenience.



Responding Promptly Even While You're Doing Something Else

When visitors call while you're busy cleaning, washing, gardening, etc., you can promptly respond and talk to the visitor with the handheld wireless monitor.



Wireless Monitors for Room-to-Room Communication Installed without Any Construction

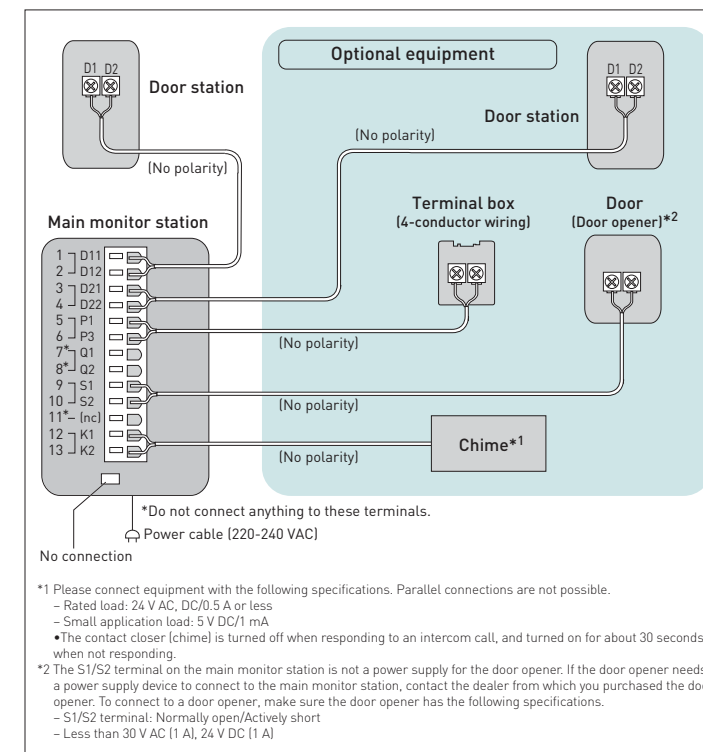
No need for wiring or other construction. Simply carry a wireless monitor with you, and you can call from any place you want. You can also call to all of the wireless monitors simultaneously.



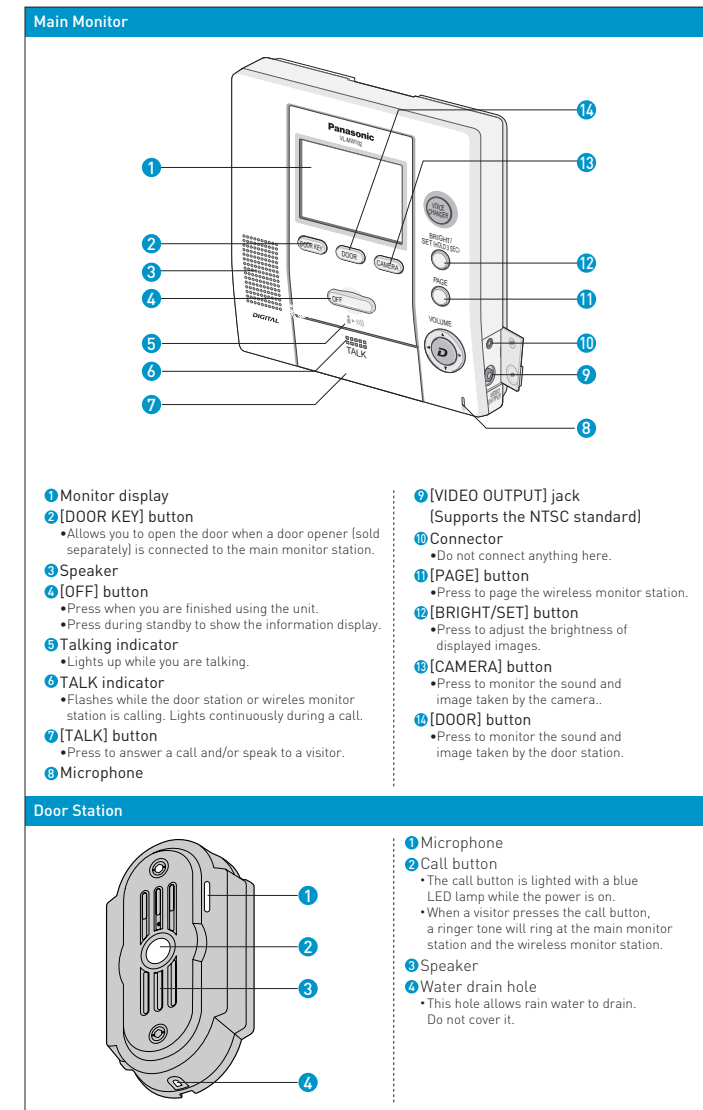
Specifications

Model No.	VL-MW102BX	VL-W600BX
Main Features	Main Monitor	Wireless Monitor
Design		
System Configuration	Up to 2 door stations, 4 wireless monitors, 2 repeaters	—
LCD Size	3.5"	1.8"
Communication	Handsfree or press-to-talk	
Answer by Voice	Yes	
Ringer Tone	Yes [3]	
Ringer Volume	3 steps [1-3]	
Receiver Volume	3 steps [1-3]	
Intercom (Monitor to Monitor)	Main monitor to all/each wireless monitor	Wireless monitor to all/each monitor
Voice Change	Yes	
Door Key	Yes	You can open the door-lock from wireless monitor
Picture Recording	UP to 100 pictures in main monitor	You can check the pictures from the wireless monitor
Video Output	NTSC	
Extra Indicator Output	—	
Repeater	Yes (Up to 2 sets)	Yes
Frequency	2.402 GHz - 2.481 GHz	
Indication Time of Video Monitor	—	
-Outside Call [Calling]	Approx. 30 seconds	
-Monitoring	Approx. 90 seconds	
-Outside Call [Talking]	Approx. 90 seconds	
-Recording Picture[Looking]	Approx. 100 pictures	
Brightness	5 steps	
Talk Time	—	Approx. 2.5 hours
Stand-by Time	—	Approx. 200 hours
Power Consumption (Stand-by)	Approx. 0.02 A	—
Power Consumption (Operating)	Approx. 0.15 A	—
Material	Flame retardant ABS resin (panel: acrylic resin)	ABS resin
Power Supply	220 - 240 V AC, 50 Hz	Ni-MH battery [3.6 V DC / 650 mAh]
Operating Environment	0 °C to 40 °C, Up to 90 % RH (relative humidity) non condensing	
Weight	Approx. 760 g	Approx. 175 g
Dimensions [W x D x H]	165 x 41.5 x 188 mm	52 x 35 x 157 mm
Length of Cable	50 m [CAT 3 Cable]	—
[Main Monitor to Door Station]	100 m [22 AWG Cable (ø 0.65)]	—
External Material	—	ABS resin
Power Supply	—	100 - 240 V AC, 50/60 Hz
Operating Environment	—	0 °C to 40 °C, up to 90 % RH (relative humidity) non condensing
Weight	—	Approx. 115 g (including the stand)
Dimensions [W x D x H]	—	Approx. 76 x 90 x 115 mm (using with the stand) Approx. 76 x 48 x 105 mm (using without the stand)
Model No.	VL-GC001BX-S	
Main Features	Door Station	
Design		
Colour	Silver	
Material	Aluminium	
Viewing Area	Yes	
- Horizon [50 cm from Camera]	Approx. left & right 58 cm [60°] → angle change 65 cm	
- Vertical [50 cm from Camera]	Approx. up direction 43 cm [46°]	
Angle Adjustment	Left & right	
Lighted Key	Blue light	
Camera Device	CCD [250k pixels]	
Minimum Brightness	Approx. 1 lux / 50 cm from camera	
Lighting Method	Infrared rays LED	
Splash Resistant	Yes	
Power Supply	From monitor	
Operating Environment	-10 °C to 50 °C, Up to 90 % RH (relative humidity) non condensing	
Weight	Approx. 330 g	
Dimensions [W x D x H]	Approx. 90 x 35 x 165 mm	
Model No.	VL-FAN1BX	
Main Features	Repeater	
Design		
Current Consumption	Stand-by: approx. 0.05 A During operation: approx. 0.08 A	
Frequency	2.402 GHz - 2.481 GHz	
Power Supply	100 - 240 V AC, 50 Hz	
Operating Environment	0 °C to 40 °C, Up to 90 % RH (relative humidity) non condensing	
Weight	Approx. 85 g	
Dimensions [W x D x H]	Approx. 101 x 82 x 27 mm	

Wiring Diagram



Parts Names



Panasonic

ideas for life

2006 Wireless Video Intercom System
VL-SW102BX



See and Talk from Wherever You Are



Answer the Door Safety and Easily

We all need to watch out for ourselves in daily life. With the unique Panasonic cordless communication technology applied to the new wireless video intercom, you can now identify visitors by both image and voice, giving you greater safety and security. This all-round wireless video intercom can be used from anywhere by any member of the family, providing easy usability, convenience, and safety.



Easy Functions That Can Be Used by Anybody

Main Set VL-SW102BX

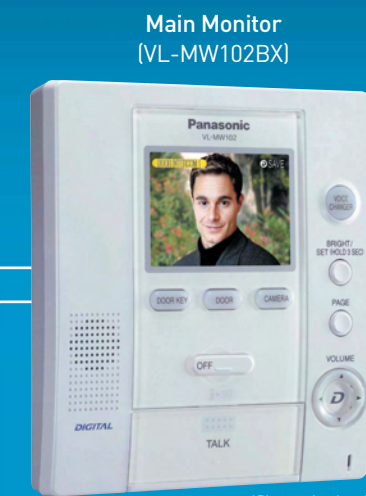


Door Station
(VL-GC001BX-S)



Door Key

You can use the monitor to unlock the door, saving you the trouble of having to go to the entrance.



Main Monitor
(VL-MW102BX)

*Picture simulated.



DVD Recorder

TV



Wireless Monitor
(VL-W600BX)

Door Station

The door station is covered in a metallic body that conceals the camera and resists damage.

Main Monitor

Without opening the door, you can see the visitor from the monitor display.

Wireless Monitor

You can carry the wireless monitor around like a cordless handset and use it to operate the main monitor by remote control.

Optional Accessories



Repeater
(VL-FAN1BX)
—Option—

Wireless Monitor
(VL-W600BX) —Option—

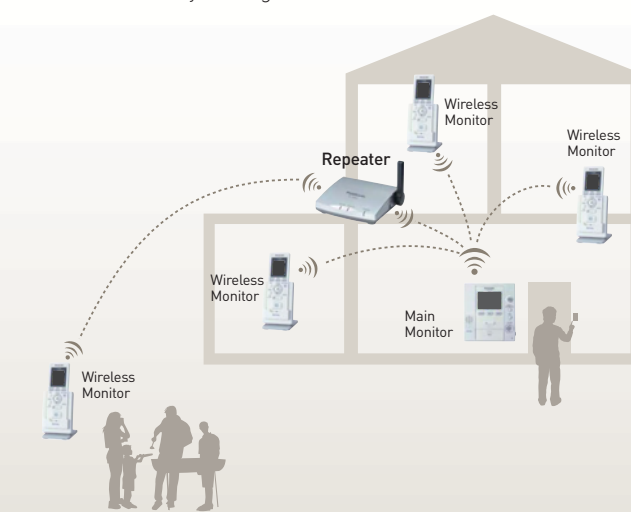
Wireless Monitor
(VL-W600BX) —Option—

Repeater

A repeater can be used to extend the wireless coverage area and increase convenience.

Monitor easily from virtually anywhere Expandable System

By adding on up to three wireless monitors, you can answer the door from just about anywhere in the house. You can even expand the coverage area further by using a repeater. This is ideal for large homes, homes with detached buildings, or for use in the yard or garden.



Lights up at Night Illuminated Button

The ringer illuminates at night, making it easier for guests to find while also lending an attractive look to your doorway. When a visitor presses the button, a chime tone sounds at the indoor colour monitor unit.



Feel Secure Even When You Are Away from Home Picture Recording

The intercom records the images of up to 100 visitors. And when the memory becomes full, the intercom automatically replaces the old images with new ones, so you do not need to replace the memory data. This is a highly secure and useful function for recording visitors while you're away from home.



Responding Even When Your Hands Are Occupied Voice Answer Mode

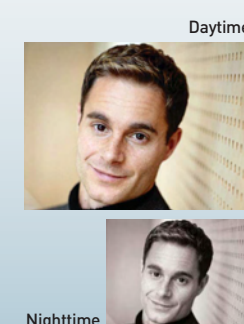
Even when you cannot press the button because your hands are occupied with something like cooking or cleaning, you can talk with a visitor in Voice Answer mode. The intercom's sensor responds to words such as "Yes" or "Hello," allowing you to talk with a visitor* without having to stop what you're doing or wash your hands.



*The visitor cannot hear your initial reply.

Easy-to-See Colour LCD monitor

It's easy to see who's at the door, thanks to a colour LCD with automatic brightness compensation and adjustable contrast. In dim evening light, the image displayed is brighter than the actual light level. At night, an infrared LED in the camera unit lets you see your visitor's face from around 50 cm (19 inches) away.*



Daytime

Nighttime

Changing Voices According to the Visitor Voice Change Function

The voice change function makes a woman's voice sound like a man's when speaking with visitors. This helps to make women feel more secure when they are home alone because visitors are not able to see inside the home.



Door station

Main monitor or wireless monitor

Room-to-Room Communication Transfer Calling

You can also communicate between the main and wireless monitors. By installing optional additional wireless monitors, you can communicate from room to room.



Main monitor

Wireless monitor

Selecting the System That's Right for You

The Panasonic wireless video intercom solution: Tough, Convenient, Expandable

Needs	Security	Comfort	Future Enhancements
	I need effective protection for my home and family.	It has to be easy enough for everyday use.	You may want to add on new functions later.
Solutions	Toughness	Convenient Functions	Expandability
	The system is tough enough to withstand attempts to break it.	You can control everything from indoors.	You can add on wireless monitors and repeaters to expand the system.